

### Winter Day Use

Want to come for the day? Have a meeting, dinner or gathering? You may reserve Widgeon, Mallard and/or Pintail cabins Monday through Thursday. Winter season begins the Friday before Labor Day and continues until the Friday before Memorial Day. Call for daily rate. Check-in time is as early as 8:00 am. Check-out as late as 10:00 pm. Times must be set with the Cordova Park Officer when reservation is made. Cleaning deposit of \$150.00 is required and is refundable if cleaning requirements are met. Renter must clean the facility prior to checking out.

Winter season begins the Friday before Labor Day and continues until the Friday before Memorial Day.

**\*Reservations for day use must be made by calling the Cordova Park Office.**



Would you like to make reservations to come stay with us?

Online reservations, park policies and information can be viewed at

[www.mycountyparks.com/county/marion.aspx](http://www.mycountyparks.com/county/marion.aspx)

**Cordova Park**  
1378 Hwy G28  
Otley, IA 50214



Phone: 641-627-5935  
[cordovacopark@gmail.com](mailto:cordovacopark@gmail.com)



[mycountyparks.com](http://mycountyparks.com)

# Cordova Park Cabins

ON LAKE RED ROCK



# Spruce • Pine • Oak • Maple

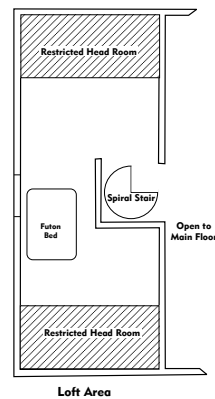
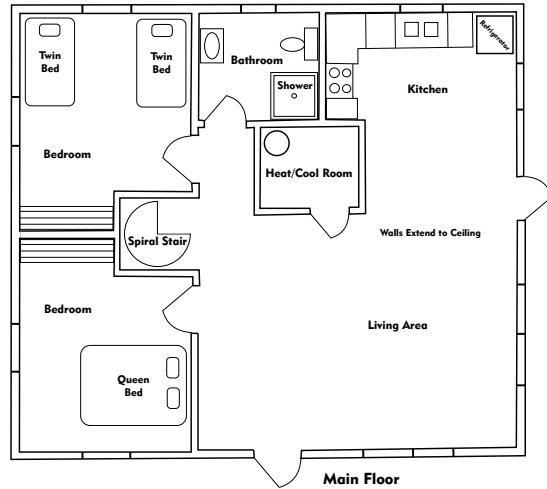


**Four modern rental cabins offer a breathtaking view of Lake Red Rock. These two bedroom rustic style cabins are available year-round. Maximum limit of eight persons per cabin; sleeps 4 to 5 comfortably.**

## Cabins come equipped with:

1. Modern kitchen with full-size refrigerator, stove/oven and microwave. One set of pots and pans with some cooking utensils, toaster and coffee maker.
2. Kitchen table and chairs.
3. One bedroom with a queen sized bed and another bedroom with two twin beds, 32" H.D. Satellite T.V. in master bedroom.
4. Modern bathroom with shower. Toilet tissue provided.
5. Chairs, sofa and end tables, 47" H.D. Satellite T.V. w/DVD player in living area.
6. Futon in loft area.
7. Porch furniture, picnic table, fire ring and charcoal grill.
8. Central air and central heat.
9. High chair available upon request.

**Complete list of amenities can be viewed at [www.mycountyparks.com](http://www.mycountyparks.com)**



900 sq. ft



# Widgeon • Mallard • Pintail

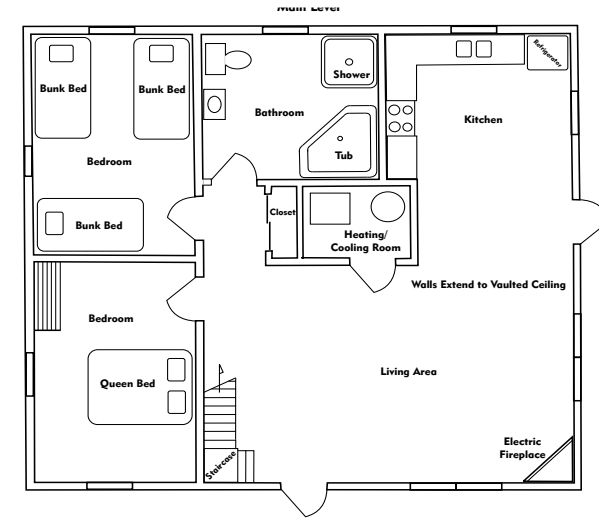


**Three modern cabins are located in a wooded area within close proximity to Lake Red Rock. These three bedroom cabins are available year-round for rental, have a maximum capacity of 12 persons per cabin; sleeps 8 to 10 comfortably.**

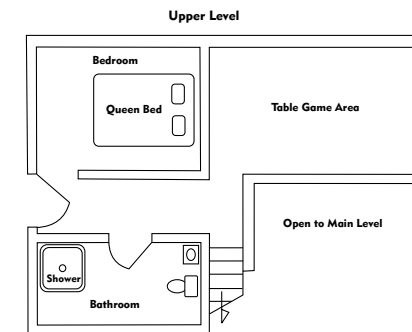
## Cabins come equipped with:

1. Modern kitchen with full-size refrigerator, stove/oven and microwave. One set of pots and pans, some cooking utensils, toaster and coffeemaker.
2. Large dining table and chairs.
3. Two bedrooms w/queen sized beds, 32" H.D. Satellite T.V. in master bedroom. One bedroom w/3 sets of bunk beds and drawers underneath.
4. Modern bathroom with shower and two-person, Jacuzzi-style tub. Second floor bathroom with shower.
5. Chairs and sofa with end tables, coffee table, 47" H.D. Satellite T.V. w/DVD player and electric fireplace in living area.
6. Game room with Foosball table and game table.
7. Porch furniture, picnic table, fire ring & charcoal grill.
8. Central air and central heat.
9. High chair available upon request.

**Complete list of amenities can be viewed at [www.mycountyparks.com](http://www.mycountyparks.com)**



1650 sq. ft



## Considerations prior to your visit

All policies, park information and reservations for Cordova Park may be viewed and reservations completed at [www.mycountyparks.com/county/marion.aspx](http://www.mycountyparks.com/county/marion.aspx). Cabins may be reserved at any time of the year. Summer season begins the Friday before Memorial Day and runs until the Friday before Labor Day. Reservations are Friday to Friday weeks only. Winter season begins the Friday before Labor Day and continues until the Friday before Memorial Day. Reservations may be made for a minimum of 2 nights.

## Cancellation Policy

Reservations cancelled at least 14 days prior to arrival date will be refunded 75% of rental fees.

**Reservations cancelled less than 14 days prior to arrival will be 100% non-refundable.**

**Full listing and policies may be viewed at [www.mycountyparks.com/county/marion.aspx](http://www.mycountyparks.com/county/marion.aspx)**

## What To Bring

- Complete bedding with pillow, sheets, blankets and sleeping bags.
- Complete table service with cups, glasses, dishes & silverware.
- Dish soap, dish cloth, cloth towel and potholders.
- All bath linens and toiletries.