



GARDEN & ASSOC.

P.O. Box 451, Oskaloosa, Iowa 52577-0451 Phone: (641)672-2526

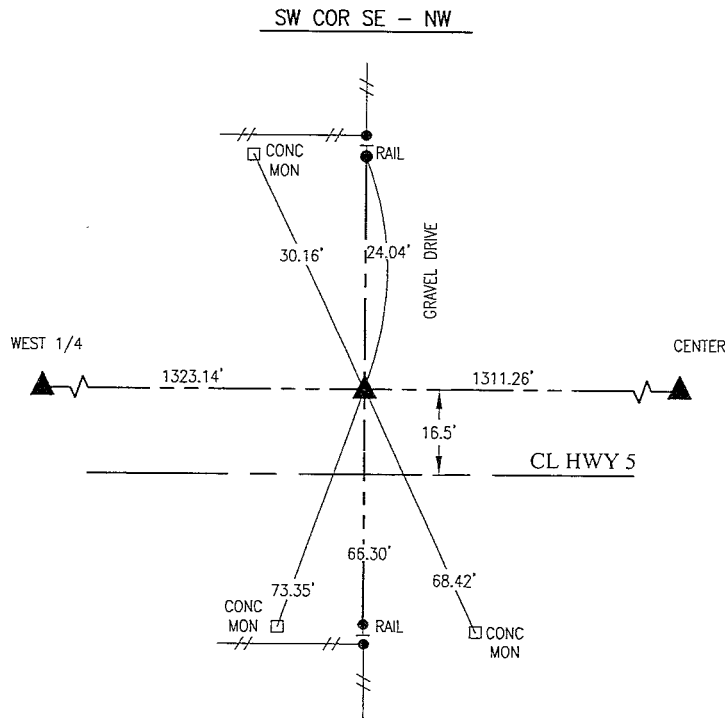
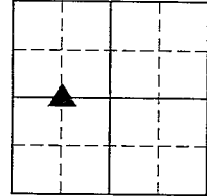
KAREN SCHWANEBECK, RECORDER
MARION COUNTY IOWA

UNITED STATES PUBLIC LAND SURVEY CORNER CERTIFICATE

OF

Land Survey Monuments situated in Section 12, Township 74, Range 19, of the Fifth Principal Meridian, MARION County, Iowa.
Previously recorded in NO CERTIFICATE OF RECORD in County Recorder's Office.

Monument Description and Remarks: SEE BELOW



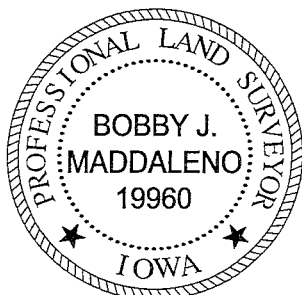
APRIL 2021
SET 5/8" REBAR WITH YELLOW CAP #19960 ON LINE BETWEEN THE CENTER OF SECTION AND WEST 1/4 CORNER IN LINE WITH FENCES NORTH AND SOUTH.

I hereby certify that this land surveying document was prepared and the related survey work was performed by me or under my direct personal supervision and that I am a duly licensed Professional Land Surveyor under the laws of the State of Iowa.

Bobby J. Maddaleno 4-16-21
Bobby J. Maddaleno, P.L.S. Date

License number: 19960
My license renewal date is December 31, 2021

SEAL



List Corners to be Indexed			
Corners	Section	Township	Range
SW COR SE-NW	12	74	19

pd. # 7-00 Ret Garden & Assoc - Emu