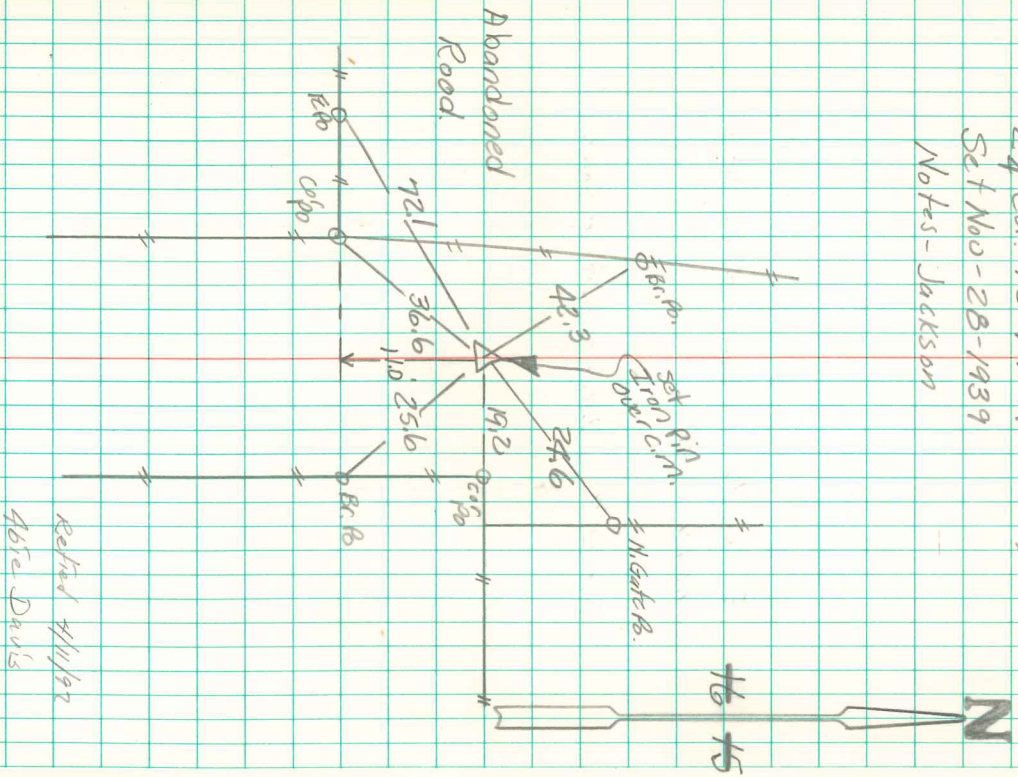


Found Broken Sandstone 1-Piece
 3x5x6" - 1 piece 3x9x10", also 2-1 1/2" Dike
 Sct Crm. Tile on North & South
 under weath Stone on North side
 of a.m.

E 1/2 Cor. 16-74-19
 Sct No. 28-1939
 Notes - Jackson



Refered 4/11/92
 461e Davis