

601865



Document 21-3710

Book 2021 Page 3710 Type CORNR Pages 1  
Date 6/07/2021 Time 2:26 PM  
Rec Amt \$7.00



GARDEN & ASSOC.

P.O. Box 451, Oskaloosa, Iowa 52577-0451 Phone: (641)672-2526

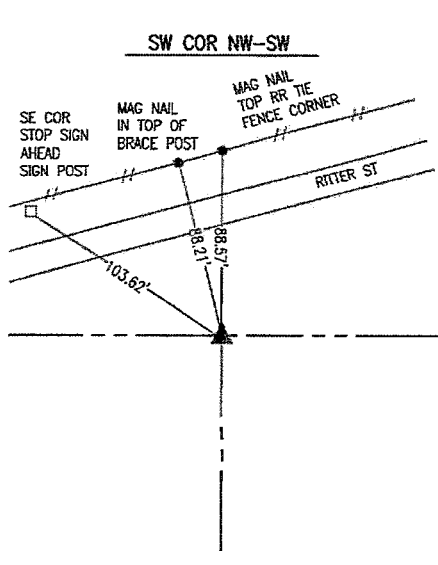
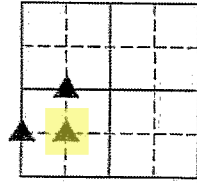
KAREN SCHWANEBECK, RECORDER  
MARION COUNTY IOWA

UNITED STATES PUBLIC LAND SURVEY CORNER CERTIFICATE

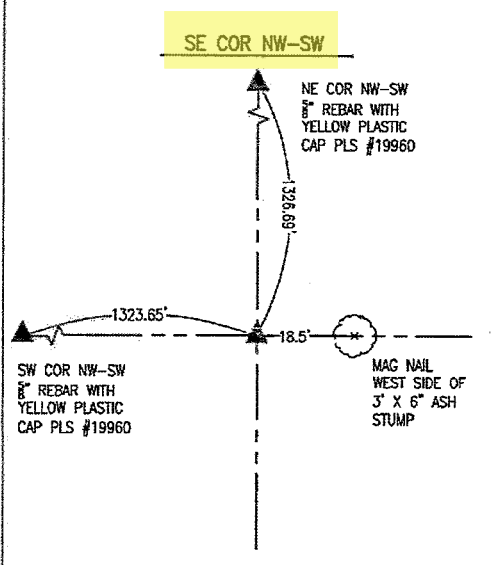
OF

Land Survey Monuments situated in Section 01, Township 74, Range 19, of the Fifth Principal Meridian, MARION County, Iowa. Previously recorded in NO CERTIFICATE OF RECORD in County Recorder's Office.

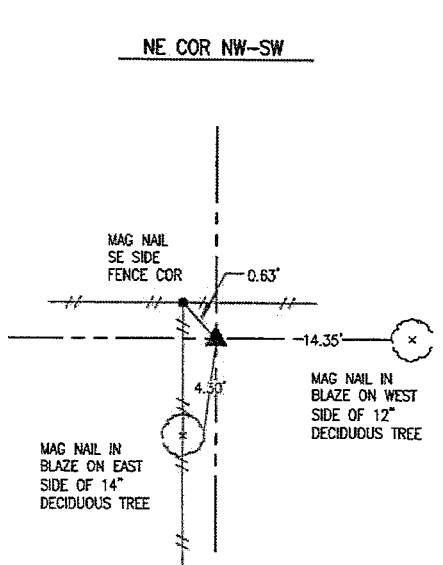
Monument Description and Remarks: SEE BELOW



MAY 2021  
SET 5/8" X 30" REBAR WITH YELLOW PLASTIC CAP PLS # 19960 1.00' DEEP IN CULTIVATED FIELD AT THE MIDPOINT OF A LINE CONNECTING THE WEST 1/4 AND SW CORNER OF SECTION 1-74-19.



MAY 2021  
SET 5/8" X 30" REBAR WITH YELLOW PLASTIC CAP PLS # 19960 1.00' DEEP AT THE INTERSECTION OF LINES CONNECTING OPPOSING 1/4-1/4 SECTION CORNERS. THERE ARE NO DURABLE TIES IN THE VICINITY OF THE CORNER.

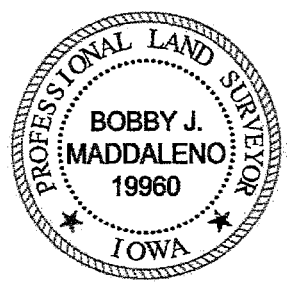


MAY 2021  
SET 5/8" X 30" REBAR WITH YELLOW PLASTIC CAP PLS # 19960 AT THE MIDPOINT OF A LINE CONNECTING THE WEST 1/4 CORNER AND CENTER OF SECTION 1-74-19.

I hereby certify that this land surveying document was prepared and the related survey work was performed by me or under my direct personal supervision and that I am a duly licensed Professional Land Surveyor under the laws of the State of Iowa.

*Bobby J. Maddaleno* 5-26-21  
Bobby J. Maddaleno, P.L.S. Date  
License number: 19960  
My license renewal date is December 31, 2021

SEAL



List Corners to be Indexed			
Corners	Section	Township	Range
SW COR NW-SW	01	74	19
SE COR NW-SW	01	74	19
NE COR NW-SW	01	74	19

add. \* 7: CW, Dist. No. A. - Ems