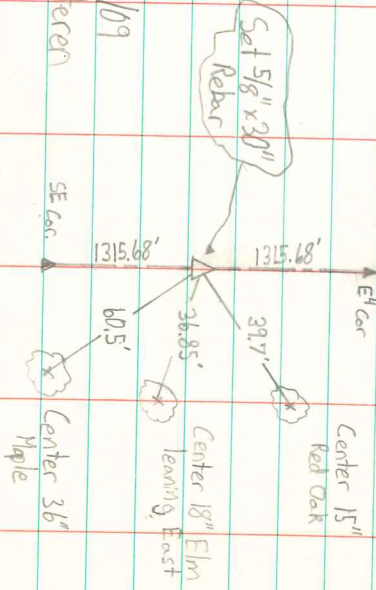


② NE Cor. SE-SE Sec. 26-74-19

Note: Set on line midway between E<sup>4</sup> Cor + SE cor of Sec. 26



Retied 1/13/09  
Kamal Nugteren

SE Cor

1315.68'

1315.68'

E<sup>4</sup> Cor

SE cor of Sec. 26

SE Cor

E<sup>4</sup> Cor

Center 15" Red Oak

Center 18" Elm leaning East

Center 36" Maple

60.5'

36.85'

39.7'