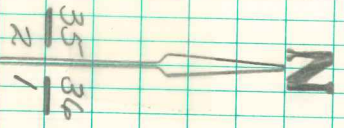
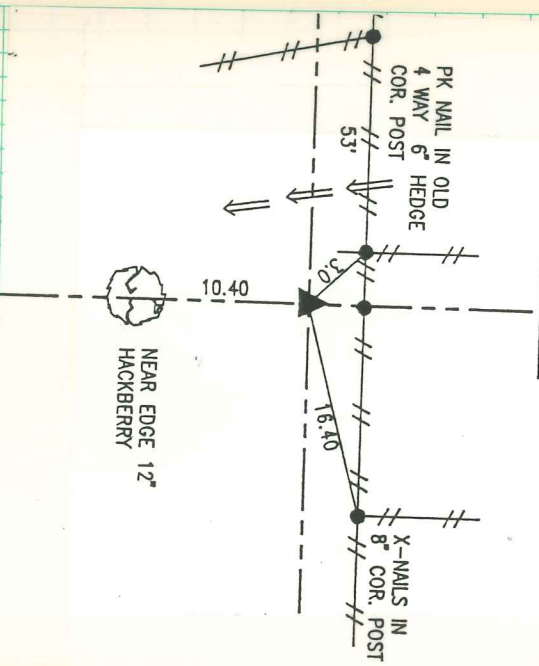


NE. Cor 2-74-19
 Set - June - 12-41
 Notes - Kennedy
 Party - Wells, Burruss & Glass

NE COR.
 2-74-19



Checked 8 July 83
 LERRY WINGTAN

Found Grant Rock 15x12x9"

Watkins Tile Destroyed by Erosion
 & Excavation For Cor Stone

Set C.M. where we found Rock
 & Put Rock top C.M. at inter-
 section of old fence lines N. &
 S. and E. & W.

8 JULY 1993
 FND. 9"x12"x15" GRANITE ON SOUTH SIDE OF OLD
 ROTTEN CORNER POST PER 1941 WPA TIES. SEARCHED
 3"x3" AREA BUT COULD NOT FIND CONC. MON. WHICH WAS
 SUPPOSED TO BE UNDER GRANITE. SET 5/8"x30" REBAR
 ON SOUTH SIDE GRANITE.