

Instr. Number: 22-3322
 BK: 2022 PG: 3322
 Recorded: 6/20/2022 at 2:48:48.0 PM
 County Recording Fee: \$7.00
 Iowa E-Filing Fee: \$3.00
 Combined Fee: \$10.00
 Revenue Tax:
 NAOMI ELLIS, RECORDER
 Marion County, Iowa

RETURN TO: DANIELS LAND SURVEYING, 22470 18TH LANE, NEW VIRGINIA IA 50210 (515) 577-2583

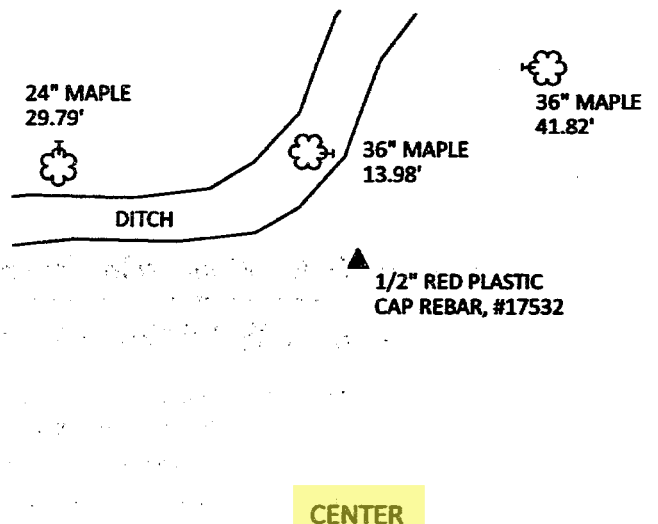
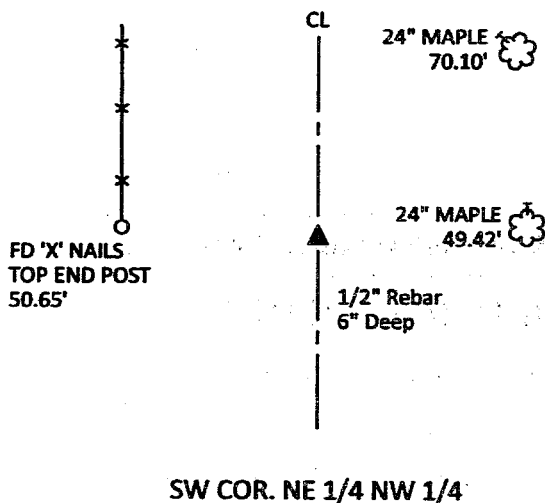
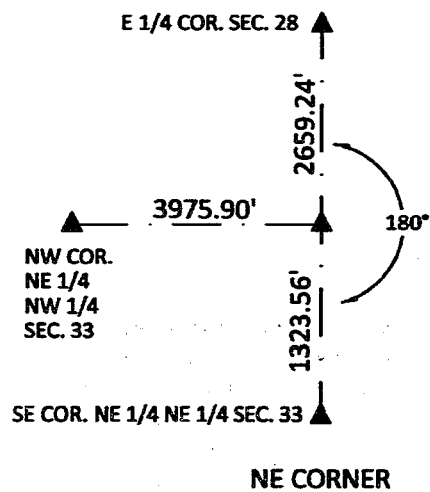
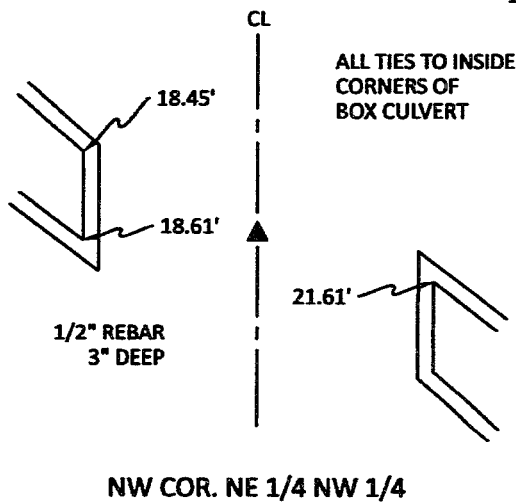
UNITED STATES PUBLIC LAND CORNER CERTIFICATE

Land Survey Monuments in Section 33, Township 74 North, Range 19 West of the 5th P.M., Marion County, Iowa.
 Previously recorded in n.a. in the County Recorder's Office

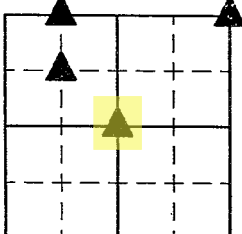
MONUMENT DESCRIPTIONS AND REMARKS:

NW COR. NE 1/4 NW 1/4 - Found 1/2" rebar, 3" deep from County Engineer ties. Accepted position. NE CORNER - Position determined by traverse of Section. No monument set because corner falls in river. SW COR. NE 1/4 NW 1/4 - Found 1/2" rebar, 6" deep from County Engineer ties. Accepted position. **CENTER - Set by traverse of Section.**

PLAN VIEW



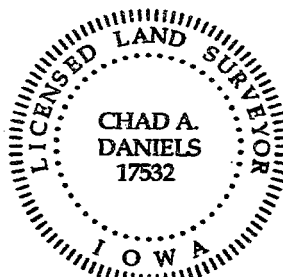
ALL TIES TO RING SHANK NAILS UNLESS NOTED



Section Number:

33

Project Number: 1870



I hereby certify that this surveying document was prepared by me and the related survey work was performed by me or under my direct personal supervision and that I am a duly licensed Professional Land Surveyor under the laws of the State of Iowa.

Signed Chad A. Daniels 20 JUN 22
 Chad A. Daniels Date

Iowa License No. 17532
 My license renewal date is 12-31-2022