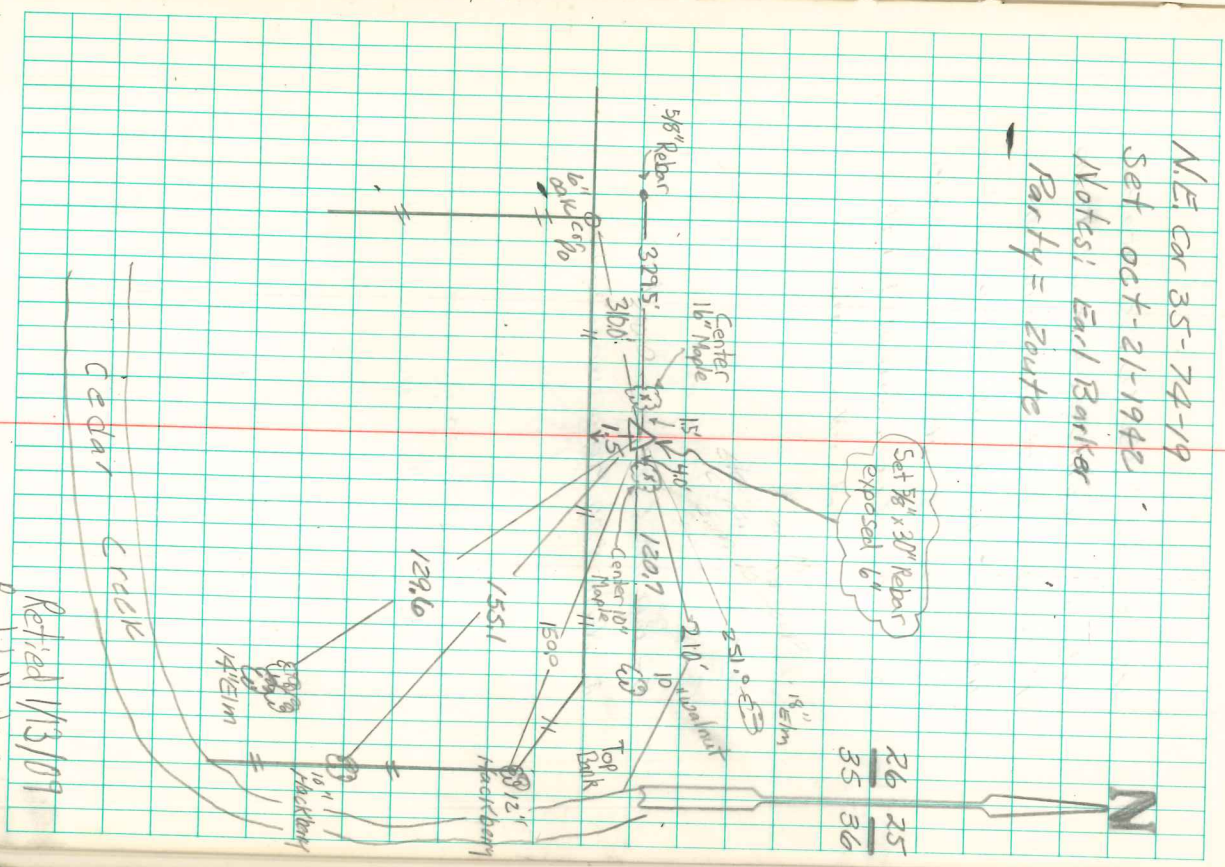


Found 6"x24"x30" Gray Sandstone
 over 2-2" A Tile, all in vertical
 Position. Left the Bottom Tile
 in its original Position. set c.m.
 over same. Top of c.m. 8" below
 Surface. Placed the 6"x24"x30"
 Sandstone on North side c.m.

2640.0' E of Stake & c.m. at N $\frac{1}{4}$ cor.
 1318.0' E " Stake at $\frac{1}{4}$ cor.

NE cor 35-74-19
 Set OCT-21-1942
 Notes: Earl Barker
 Party = Route



Retired 1/3/09
 Kandak Nurgaren