

KAREN SCHWANEBECK, RECORDER  
MARION COUNTY IOWA

RETURN DOCUMENT TO: JANES SURVEYING, INC. 573-769-7020  
222 S. MAIN ST. P.O. BOX 146 PALMYRA, MO 63461

PLAT PREPARED BY: DOUG WALKER  
IOWA PROFESSIONAL LAND SURVEYOR #23137

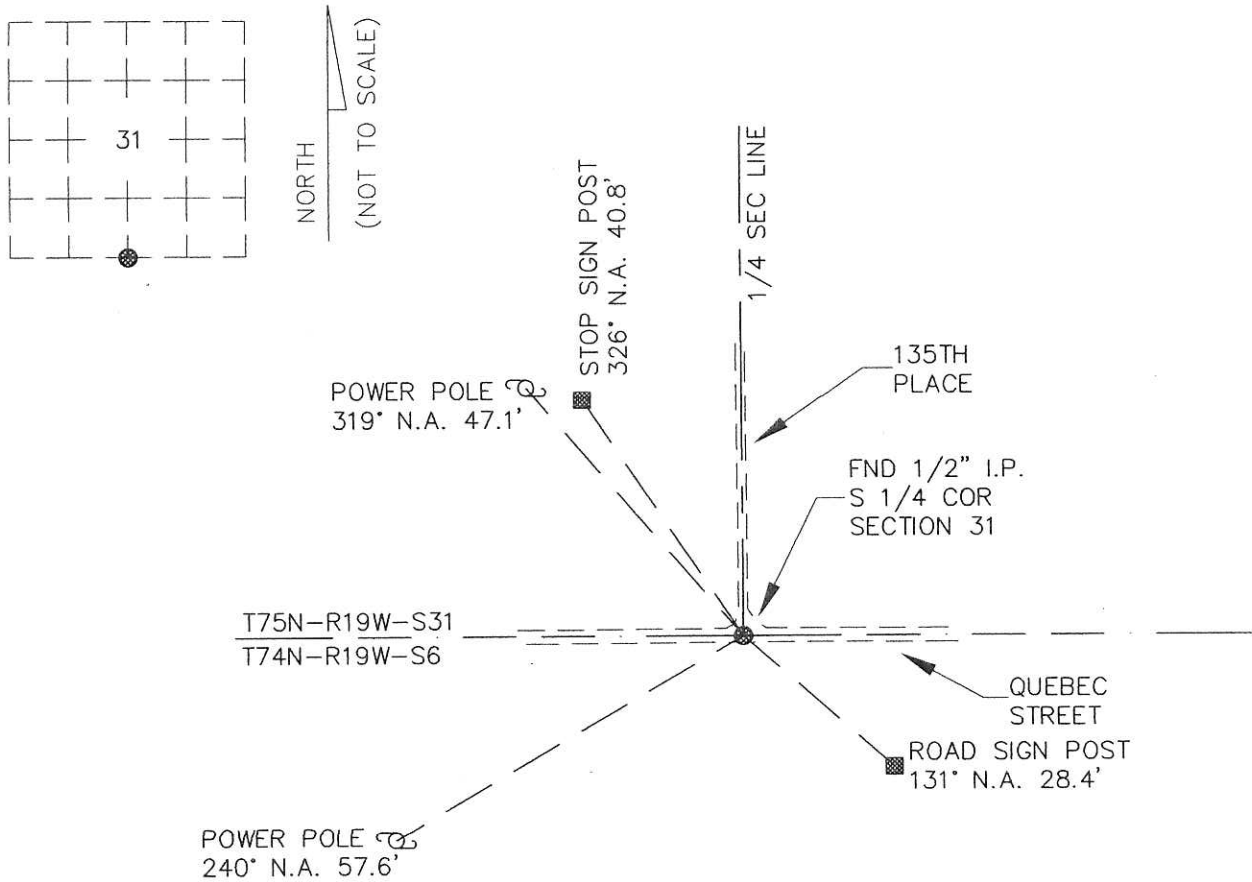
UNITED STATES PUBLIC LAND SURVEY CORNER CERTIFICATE

LAND SURVEY MONUMENT(S) SITUATED IN: SECTION 31, TOWNSHIP 75N, RANGE 19W  
OF THE FIFTH PRINCIPAL MERIDIAN, MARION COUNTY, IOWA.

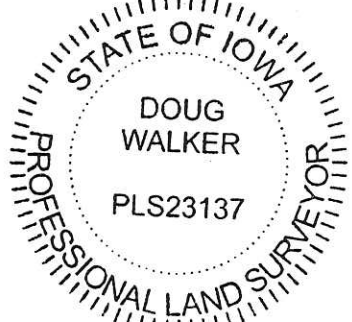
S 1/4 CORNER SEC 31-75-19: FOUND 1/2" IRON PIN. A.C. DAVIS PLS #5594 MARCH 25, 1997;  
JUNE 7, 2004; JULY 10, 2004; FEBRUARY 19, 2005; APRIL 25, 2014.

RECOVERY TIE DRAWING

(SHOW MONUMENT DESCRIPTION, ACCESSORIES & KNOWN HISTORY AT EACH RECORD CORNER WITH TIES).



PLS 700 CK - Ret Janes Surveying Inc



I, DOUG WALKER, HEREBY  
CERTIFY THAT THIS DOCUMENT WAS PREPARED & THE RELATED SURVEY WORK  
WAS PERFORMED UNDER MY DIRECT SUPERVISION & WAS EXECUTED IN  
ACCORDANCE WITH THE MINIMUM STANDARDS FOR U.S. PUBLIC LAND SURVEY  
CORNER CERTIFICATES UNDER THE LAWS OF THE STATE OF IOWA.

*D Walker*

DOUG WALKER, IA PLS NO. 23137

8-31-16  
DATE

Found sandstone 18"x17"x6" &  
1-2" D Tile

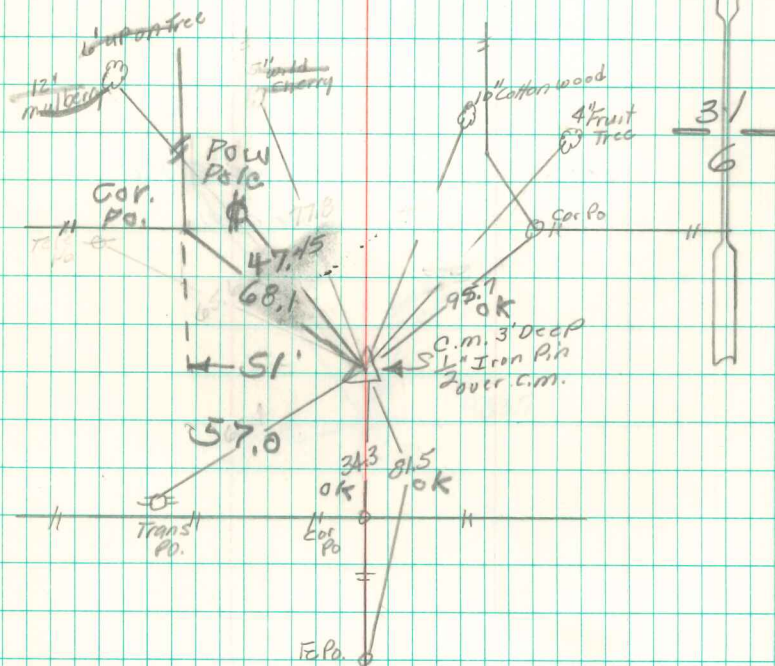
set C.M. over D.Tile & Placed stone  
on top.

N $\frac{1}{4}$  Cor 6-74-19

Set- 6-24-40

Notes- Wignall

Party = Nandell, Frazier & Harger.



Found May-1983  
Retired RCW.

3/25/97 Abie Davis