



Document 26-10

Book 2026 Page 10 Type CORNR Pages 1
Date 1/02/2026 Time 11:20 AM
Rec Amt \$7.00

NAOMI ELLIS, RECORDER
MARION COUNTY IOWA

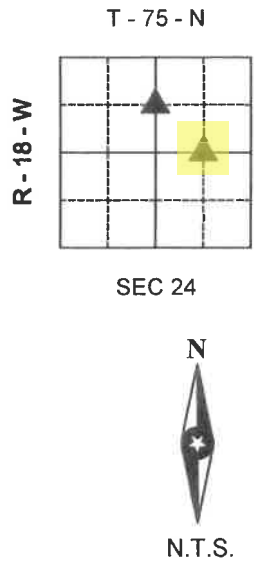
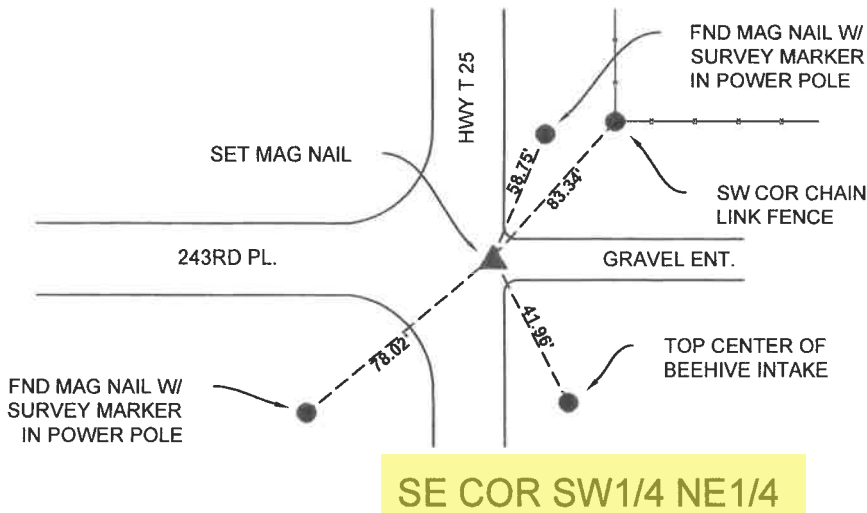
PREPARED BY AND RETURN TO: **ABACI CONSULTING INC.**, 3000 SE GRIMES BLVD, STE 800, GRIMES, IA 50111, PH.(515)986-5048

UNITED STATES PUBLIC LAND SURVEY CORNER CERTIFICATE

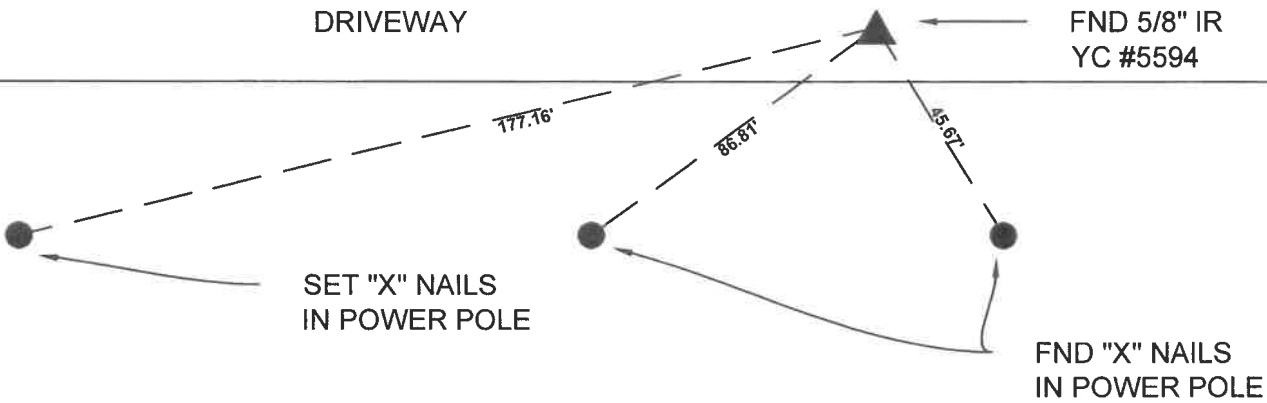
OF
LAND SURVEY MONUMENTS SITUATED IN SECTION 24, TOWNSHIP 75N, RANGE 18W, of the Fifth Principal Meridian, MARION County, Iowa.
Previously recorded in BK. 2009 PG. 4344 in County Recorder's Office.

Monument Description & Remarks: NW CORNER SW 1/4 NE 1/4 - FND 5/8" IR YC #5594, ACCEPTED POSITION
BASED ON PREVIOUS SURVEY. NO PREVIOUS RECORDED TIES.
SE CORNER SW1/4 NE 1/4 - SET MAG NAIL, PREVIOUS SURVEY SHOWS A FOUND NAIL @ $\epsilon\epsilon$ INTERSECT,
USED AS A CORNER, AFTER REVIEW OF COUNTY ROAD RECORDS & PLANS THE PREVIOUS NAIL WAS A P.O.T.
ON THE ROADWAY, NOT A SECTION CORNER. NO PREVIOUSLY RECORDED TIES.

PLAN VIEW



DRIVEWAY



NW COR SW1/4 NE1/4

#25229

I HEREBY CERTIFY THAT THIS SURVEYING DOCUMENT WAS PREPARED AND THE RELATED WORK WAS PERFORMED BY ME OR UNDER MY DIRECT PERSONAL SUPERVISION AND THAT I AM A DULY LICENSED PROFESSIONAL LAND SURVEYOR UNDER THE LAWS OF THE STATE OF IOWA.

SIGNATURE *Merlin L. Davis* 12/29/2025
MERLIN L. DAVIS DATE

PRINTED OR TYPED NAME:
IOWA LIC. NO. 19440
MY LICENSE RENEWAL DATE IS DECEMBER 31, 2026
THIS SHEET ONLY

PAGES COVERED BY THIS SEAL:



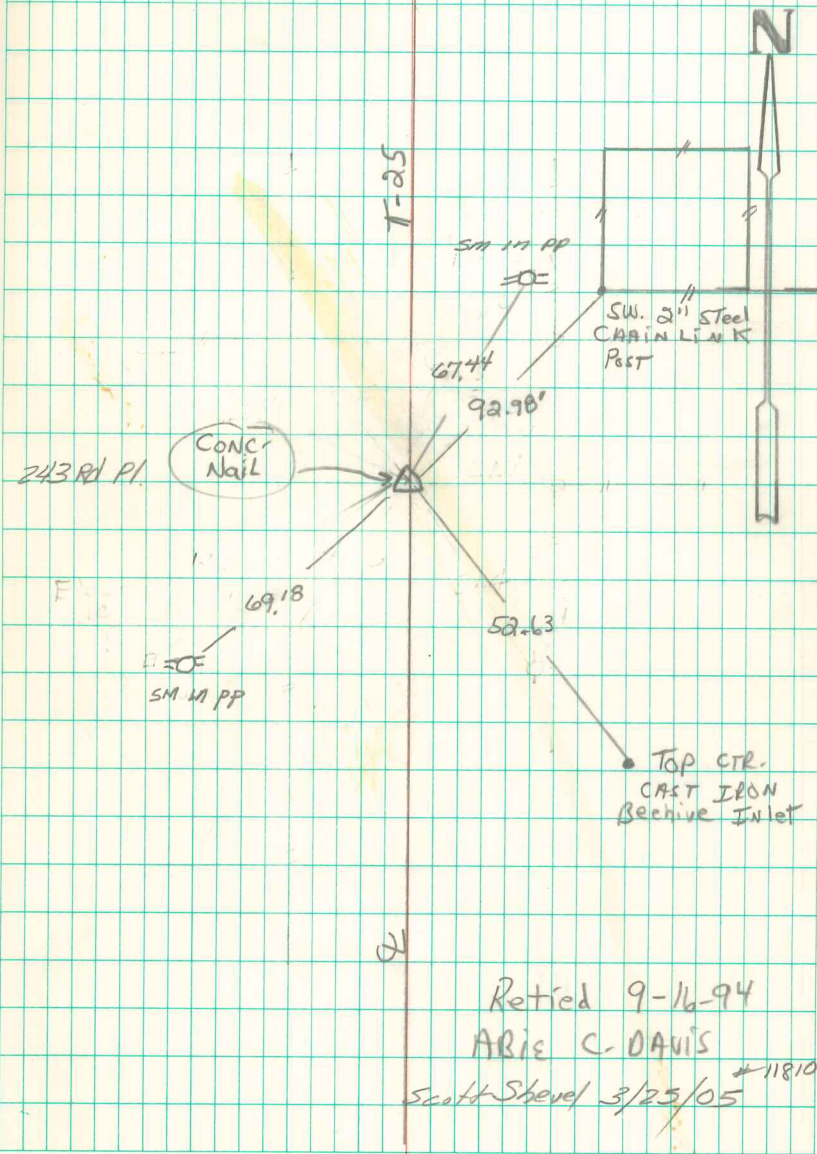
CORNERS TO BE INDEXED

CORNER	SECTION	TWP	RANGE
NW COR SE1/4 NE1/4	24	75N	18W
SE COR SE1/4 NE1/4	24	75N	18W

PREPARED BY - KYLE A. ABACI CONSULTING INC.

3 1/4 - N.E. 1/4 Cor sec 24-75-18

24



Retred 9-16-94

ARIE C. DAVIS

Scott Shevel 3/25/05

11810