



Document 25-146

Book 2025 Page 146 Type CORNR Pages 1  
Date 1/10/2025 Time 12:15 PM  
Rec Amt \$7.00

NAOMI ELLIS, RECORDER  
MARION COUNTY IOWA

PREPARED BY AND RETURN TO:  
CARTER SURVEYING & CONSTRUCTION SERVICES, LLC - 8755 NE 27TH AVE - ALTOONA, IA 50009 515-343-6756

# UNITED STATES PUBLIC LAND SURVEY CORNER CERTIFICATE OF:

LAND SURVEY MONUMENTS SITUATED IN SECTION 27, TOWNSHIP 75 NORTH, RANGE 18 WEST, OF THE FIFTH PRINCIPAL MERIDIAN, MARION COUNTY, IOWA. SECTION CORNER LOCATION: CENTER CORNER

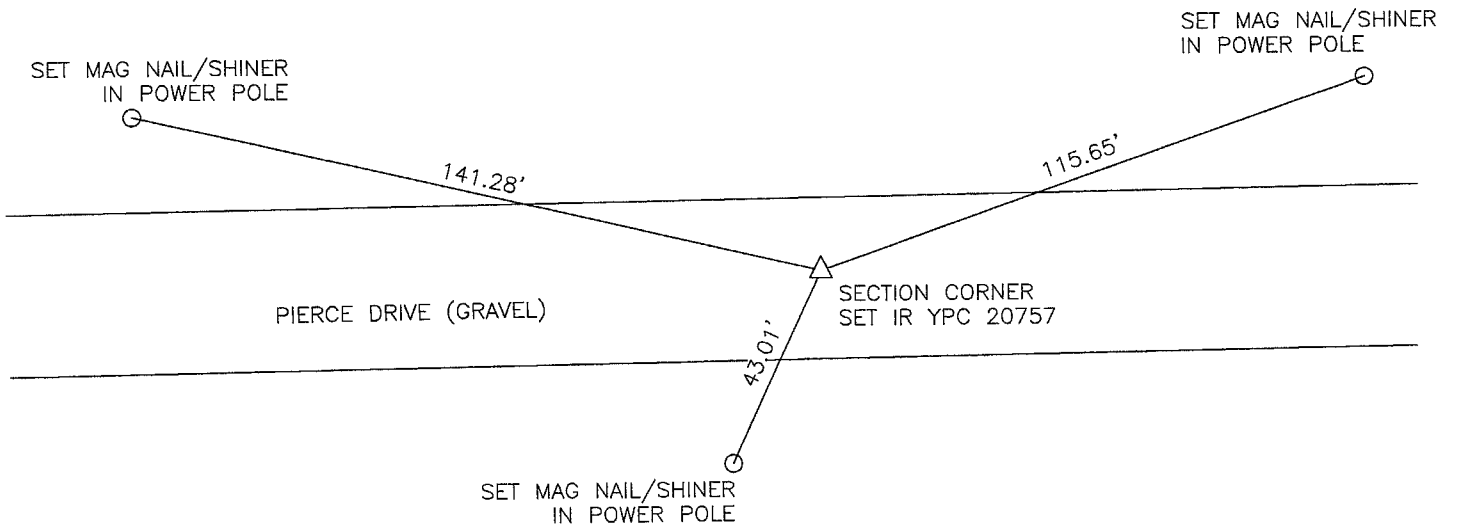
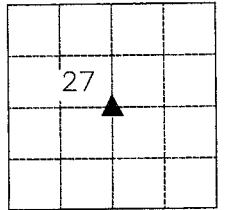
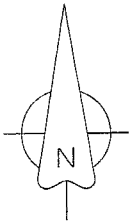
CORNER CERTIFICATE PREVIOUSLY RECORDED IN NO PRIOR RECORD FOUND

MONUMENT DESCRIPTION AND REMARKS:

ESTABLISHED CENTER SECTION CORNER AT INTERSECTION OF LINES DRAWN BETWEEN THE FOUND NORTH 1/4 CORNER TO THE FOUND SOUTH 1/4 CORNER AND THE FOUND WEST 1/4 CORNER TO THE FOUND EAST 1/4 CORNER AND SET TIES AS SHOWN.

## PLAN VIEW

(SHOW A MINIMUM OF THREE REFERENCE TIES TO DURABLE PHYSICAL OBJECTS, RELEVANT MONUMENTS AND PHYSICAL CONDITIONS THAT WILL ENABLE RECOVERY OF THE CORNER)



### SYMBOLS LEGEND:

- REFERENCE MONUMENT SET AS NOTED
- REFERENCE MONUMENT FOUND AS NOTED
- ▲ SECTION CORNER FOUND AS NOTED
- △ SECTION CORNER SET AS NOTED
- IR IRON ROD
- IP IRON PIPE
- YPC YELLOW PLASTIC CAP
- OPC ORANGE PLASTIC CAP
- (DIST) RECORD DISTANCE

DRAWN DATE: 1/2/2025  
DRAWN BY: N CARTER  
PAGE 1 OF 1



I HEREBY CERTIFY THAT THIS LAND SURVEYING DOCUMENT WAS PREPARED AND THE RELATED SURVEY WORK WAS PERFORMED BY ME OR UNDER MY DIRECT PERSONAL SUPERVISION AND THAT I AM A DULY LICENSED PROFESSIONAL LAND SURVEYOR UNDER THE LAWS OF THE STATE OF IOWA.

*N. Carter* 1-2-25  
NICHOLAS F. CARTER, P.L.S. IA LIC. NO. 20757 DATE

MY LICENSE RENEWAL DATE IS DECEMBER 31, 2026  
ADDITIONAL PAGES OR SHEETS COVERED BY THIS SEAL (NONE UNLESS INDICATED HERE):

### CORNERS TO BE INDEXED:

SECTION	TOWNSHIP	RANGE	CORNER
27	75	18	CENTER COR

Pd by Naomi Ellis - Plat Carter Surv.