



Document 25-147

Book 2025 Page 147 Type CORNR Pages 1

Date 1/10/2025 Time 12:16 PM

Rec Amt \$7.00

NAOMI ELLIS, RECORDER  
MARION COUNTY IOWA

PREPARED BY AND RETURN TO:  
CARTER SURVEYING & CONSTRUCTION SERVICES, LLC - 8755 NE 27TH AVE - ALTOONA, IA 50009 515-343-6756

### UNITED STATES PUBLIC LAND SURVEY CORNER CERTIFICATE OF:

LAND SURVEY MONUMENTS SITUATED IN SECTION 27, TOWNSHIP 75 NORTH, RANGE 18 WEST, OF THE FIFTH PRINCIPAL MERIDIAN, MARION COUNTY, IOWA. SECTION CORNER LOCATION: NORTH 1/4 CORNER

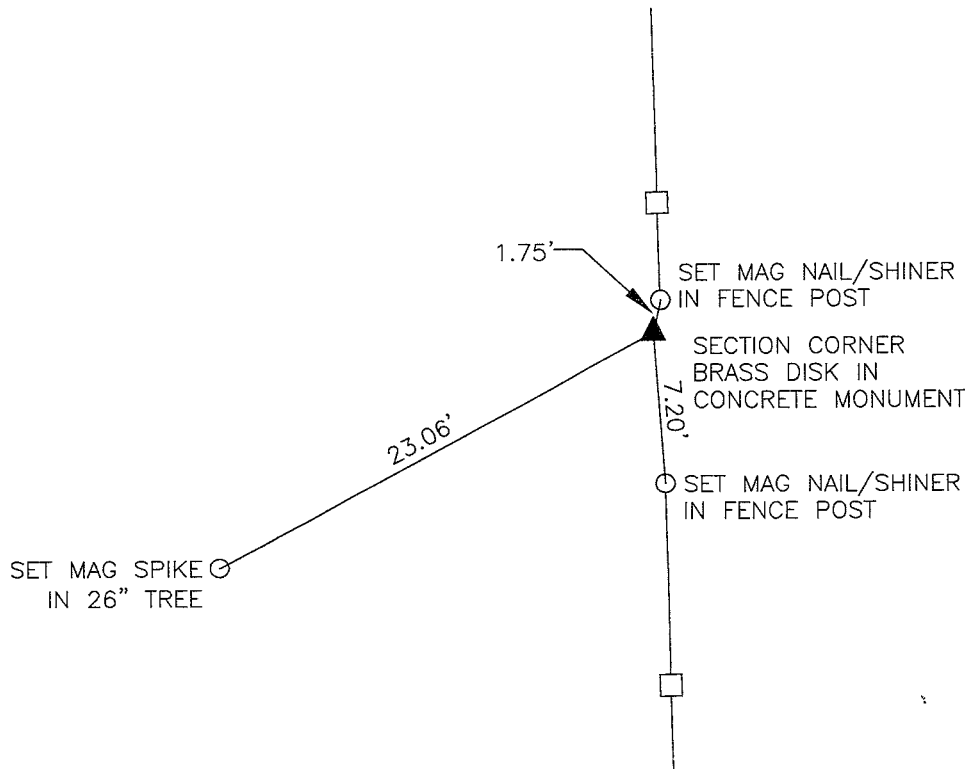
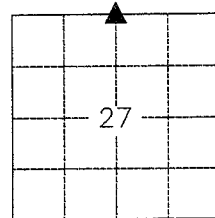
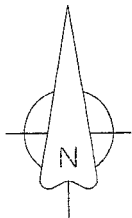
CORNER CERTIFICATE PREVIOUSLY RECORDED IN COUNTY ENGINEER'S RECORDS

MONUMENT DESCRIPTION AND REMARKS:

COUNTY ENGINEER'S RECORDS SHOW A CONCRETE MONUMENT SET AT THIS SECTION CORNER IN 1939. SEARCHED THE AREA AND FOUND A BRASS DISK IN A CONCRETE MONUMENT 14" BELOW THE GROUND SURFACE IN THE NORTH-SOUTH FENCE LINE. SET NEW TIES AS SHOWN. ALSO SET A 1/2" IRON ROD ON THE NORTH SIDE OF THE CONCRETE MONUMENT FOR LOCATING PURPOSES ONLY.

### PLAN VIEW

(SHOW A MINIMUM OF THREE REFERENCE TIES TO DURABLE PHYSICAL OBJECTS, RELEVANT MONUMENTS AND PHYSICAL CONDITIONS THAT WILL ENABLE RECOVERY OF THE CORNER)



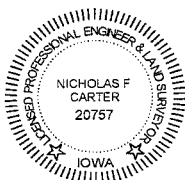
#### SYMBOLS LEGEND:

- REFERENCE MONUMENT SET AS NOTED
- REFERENCE MONUMENT FOUND AS NOTED
- ▲ SECTION CORNER FOUND AS NOTED
- △ SECTION CORNER SET AS NOTED
- IR IRON ROD
- IP IRON PIPE
- YPC YELLOW PLASTIC CAP
- OPC ORANGE PLASTIC CAP
- <DIST> RECORD DISTANCE

DRAWN DATE: 1/2/2025

DRAWN BY: N CARTER

PAGE 1 OF 1



I HEREBY CERTIFY THAT THIS LAND SURVEYING DOCUMENT WAS PREPARED AND THE RELATED SURVEY WORK WAS PERFORMED BY ME OR UNDER MY DIRECT PERSONAL SUPERVISION AND THAT I AM A DULY LICENSED PROFESSIONAL LAND SURVEYOR UNDER THE LAWS OF THE STATE OF IOWA.

*N. F. Carter* 1-2-25  
NICHOLAS F. CARTER, P.L.S. IA LIC. NO. 20757 DATE

MY LICENSE RENEWAL DATE IS DECEMBER 31, 2026

ADDITIONAL PAGES OR SHEETS COVERED BY THIS SEAL (NONE UNLESS INDICATED HERE)

#### CORNERS TO BE INDEXED:

SECTION	TOWNSHIP	RANGE	CORNER
22	75	18	S 1/4 COR
27	75	18	N 1/4 COR

Pd to Clerk - Ret Carter Surveying

Found Sand Stone 17" x 9" x 6", 24"  
South of Cor. post and 1-2"  $\phi$  tile

Set CM. over 1-2"  $\phi$  tile Horiz E & W.  
Stone on N. Side.

N.  $\frac{1}{4}$  Cor. 27-75-18

Set: 8-9-39

Nardell, Kennedy, Kears.

Dk. Thomas

Notes: Signal

