

01 OCT 29 AM 10:36



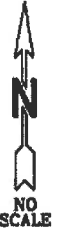
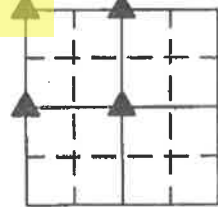
GARDEN & ASSOC.

P.O. Box 451, Oskaloosa, Iowa 52577-0451 Phone (563) 672-2526

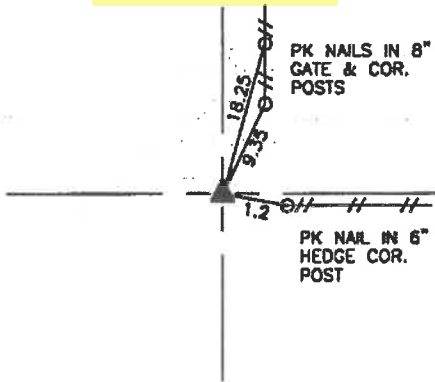
TRANSFERED
 SANDRA S. AGAN

UNITED STATES PUBLIC LAND SURVEY CORNER CERTIFICATE
 OF

Land Survey Monuments situated in Section 29, Township 75, Range 18, of the Fifth Principal Meridian, MARION County, Iowa.
 Previously recorded in N/A in County Recorder's Office.
 Monument Description and Remarks: SEE BELOW

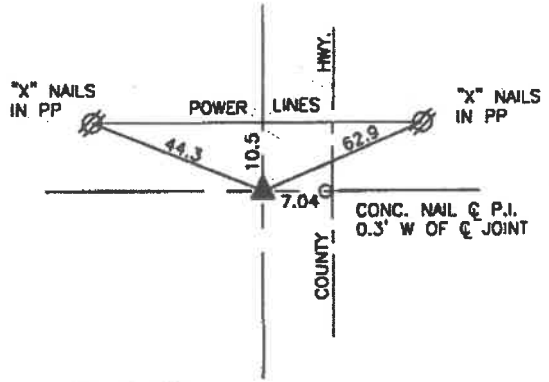


NW COR



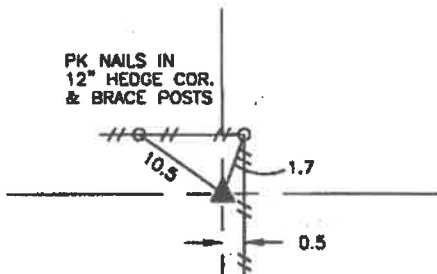
JULY 28, 2001
 FOUND WPA CONC. MON. 18" DEEP WITH SANDSTONE ON SOUTH SIDE 30" DEEP PER 1939 REF. TIES. SET 5/8"x30" REBAR ON EAST SIDE OF CONC. MON.

CENTER



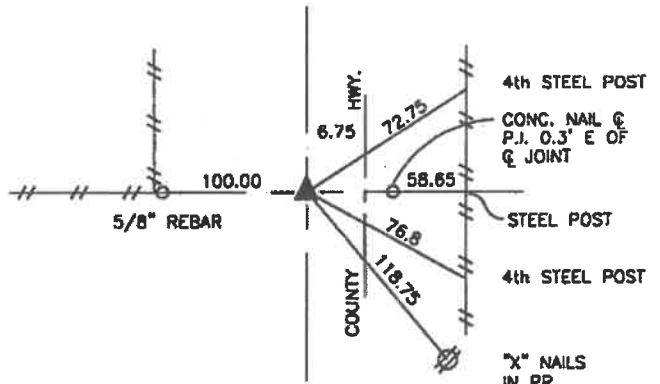
JULY 28, 2001
 FOUND CONC. NAIL IN PAVING 7.04' WEST OF @ P.I. AS NOTED ON ROAD PLANS. COR. SHOWN IN PLAT RECORDED IN BOOK 221 AT PAGE 93.

W 1/4 COR



JUNE 5, 1999
 FOUND CONC. MON. 12" DEEP WITH SANDSTONE ON WEST SIDE PER 1939 REF. TIES. SET 1/2"x30" REBAR ON NORTH SIDE OF CONC. MON.
 JULY 28, 2001
 FOUND CONC. MON. 12" DEEP. SET 5/8"x15" REBAR ABOVE CONC. MON.

N 1/4 COR



JULY 28, 2001
 FOUND CONC. NAIL IN PAVING 7.05' WEST OF @ P.I. STA. 233+93.0 AS NOTED ON ROAD PLANS.

I hereby certify that this land surveying document was prepared and the related survey work was performed by me or under my direct personal supervision and that I am a duly licensed Land Surveyor under the laws of the State of Iowa.

Randal J. Nugteren October 24, 2001
 Randal J. Nugteren, L.L.S. Date
 License number: 14416
 My license renewal date is December 31, 2002

SEAL



List Corners to be Indexed

Corners	Section	Township	Range
NW COR	29	75	18
CENTER	29	75	18
W 1/4 COR	29	75	18
N 1/4 COR	29	75	18

7021 600 @ Plat 51A

Found yellow sandstone with
broken A tile beneath, N4S.

Set CM over broken A tile and
placed stones at N.S. CM 12" deep

N.E. Cor. 30-75-18
Set: 7-12-39
Notes: Vignall

