



Document 24-5522

Book 2024 Page 5522 Type CORNR Pages 1
Date 12/30/2024 Time 11:02 AM
Rec Amt \$7.00

NAOMI ELLIS, RECORDER
MARION COUNTY IOWA



P.O. Box 451, Oskaloosa, Iowa 52577-0451 Phone: (641)672-2526

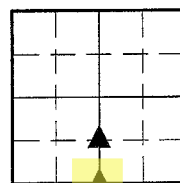
UNITED STATES PUBLIC LAND SURVEY CORNER CERTIFICATE OF

LAND SURVEY MONUMENTS SITUATED IN SECTION 29, TOWNSHIP 75, RANGE 18,
OF THE FIFTH PRINCIPAL MERIDIAN, MARION COUNTY, IOWA.

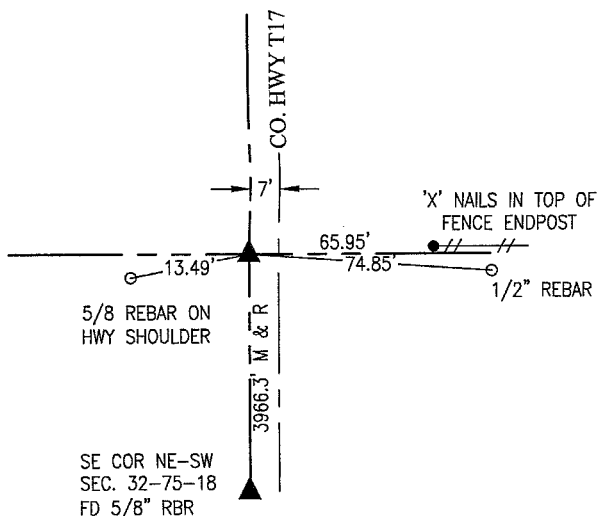
PREVIOUSLY RECORDED IN NO CERTIFICATE OF RECORD IN COUNTY RECORDER'S OFFICE.

MONUMENT DESCRIPTION AND REMARKS:

SEE BELOW

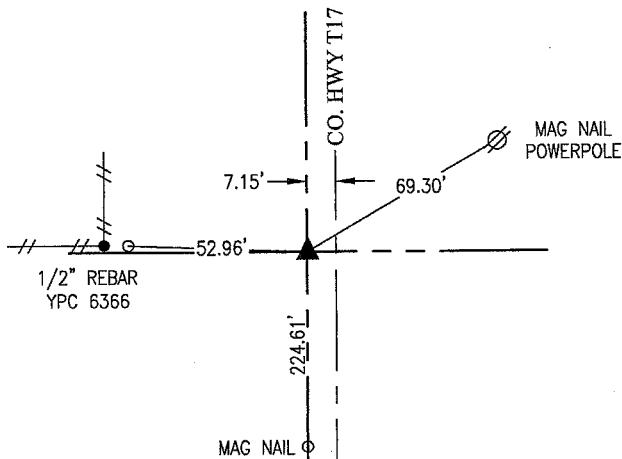


SOUTH 1/4 COR



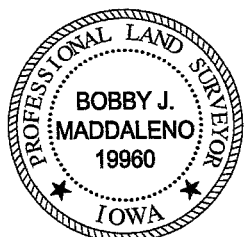
NOVEMBER 2024
CUT X CALLED FOR IN CORNER CERTIFICATE RECORDED IN BOOK 2 ON PAGE 314 HAS BEEN OBLITERATED BY AN ASPHALT OVERLAY. SET GIN SPIKE USING REMAINING TIES, ROAD PLANS AND DIMENSIONS OF RECORD FROM THE PLAT OF SURVEY RECORDED IN BOOK 2002 ON PAGE 5514 AND BOOK 2003 ON PAGE 5070.

NW COR SW-SE



NOVEMBER 2024
PK NAIL CALLED FOR IN CORNER CERTIFICATE RECORDED IN BOOK 2 ON PAGE 389 HAS BEEN OBLITERATED BY AN ASPHALT OVERLAY. SET GIN SPIKE USING REMAINING TIES, ROAD PLANS AND DIMENSIONS OF RECORD FROM THE PLAT OF SURVEY RECORDED IN BOOK 2002 ON PAGE 5514.

I hereby certify that this land surveying document was prepared and the related survey work was performed by me or under my direct personal supervision and that I am a duly licensed Professional Land Surveyor under the laws of the State of Iowa.



Bobby J. Maddaleno 12/23/24
Bobby J. Maddaleno, P.L.S. Date
License number: 19960
My license renewal date is December 31, 2025

LIST CORNERS TO BE INDEXED

CORNERS	SECTION	TOWNSHIP	RANGE
CENTER	29	75	18
NW CORNER SW-SE	29	75	18

Pd # 702 CK - Rest Garden Env.

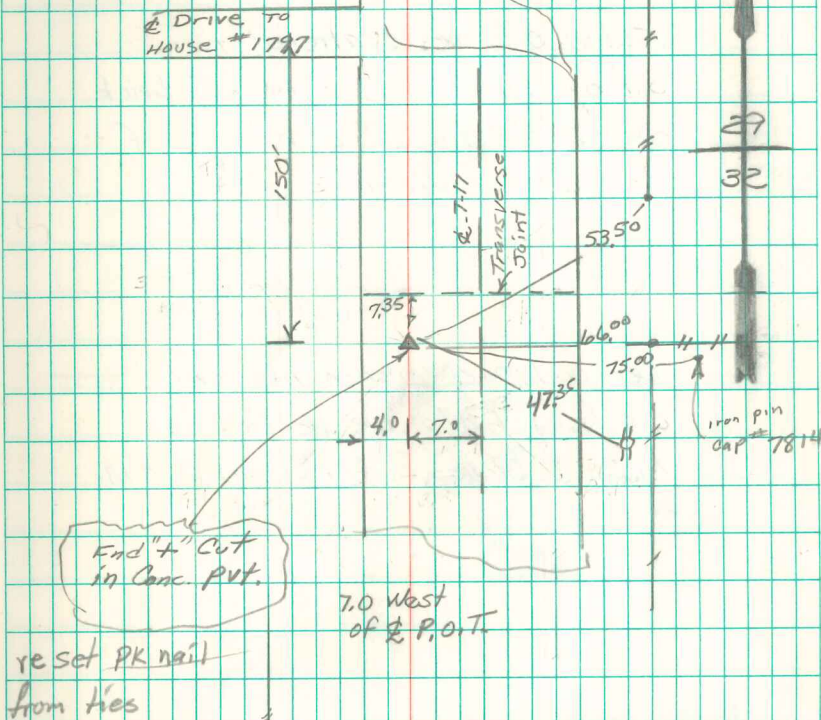
Found Old Wood Pump (I. cyl.)
4" x 13"

Lowered cylinder in place put
crackery in cyl. and set CM
over it. Top of CM 10" deep

N 1/4 Cor. 32-75-18

Set: 8-17-40

Notes: Vignall



Retied 6/2/67

7/15/78

4/3/02 Abie Davis

9/1/04 Progan Hatch