

INDEX LEGEND

SURVEYOR'S NAME / RETURN TO:

ERIC J. MILLER
 SNYDER & ASSOCIATES, INC.
 2727 SW SNYDER BOULEVARD
 ANKENY, IOWA 50023
 515-984-2020
 ERICMILLER@SNYDER-ASSOCIATES.COM

SERVICE PROVIDED BY:

SNYDER & ASSOCIATES, INC.

Instr. Number: 25-5306

BK: 2025 PG: 5306

Recorded: 12/3/2025 at 8:25:27.0 AM

County Recording Fee: \$7.00

Iowa E-Filing Fee: \$3.13

Combined Fee: \$10.13

Revenue Tax: \$0.00

NAOMI ELLIS, RECORDER

Marion County, Iowa

CORNERS TO BE INDEXED:

CORNERS	SECTION	TWP	RANGE
SW COR, SE1/4,SW1/4	01	75N	20W
NW COR, NE1/4,NW1/4	12	75N	20W

UNITED STATES PUBLIC LAND SURVEY CORNER CERTIFICATE

LAND SURVEY MONUMENT SITUATED IN SECTION 01, TOWNSHIP 75 NORTH, RANGE 20 WEST, OF THE FIFTH PRINCIPAL MERIDIAN, MARION COUNTY, IOWA. PREVIOUSLY RECORDED IN N/A IN THE COUNTY RECORDER'S OFFICE.

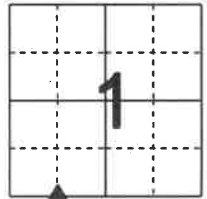
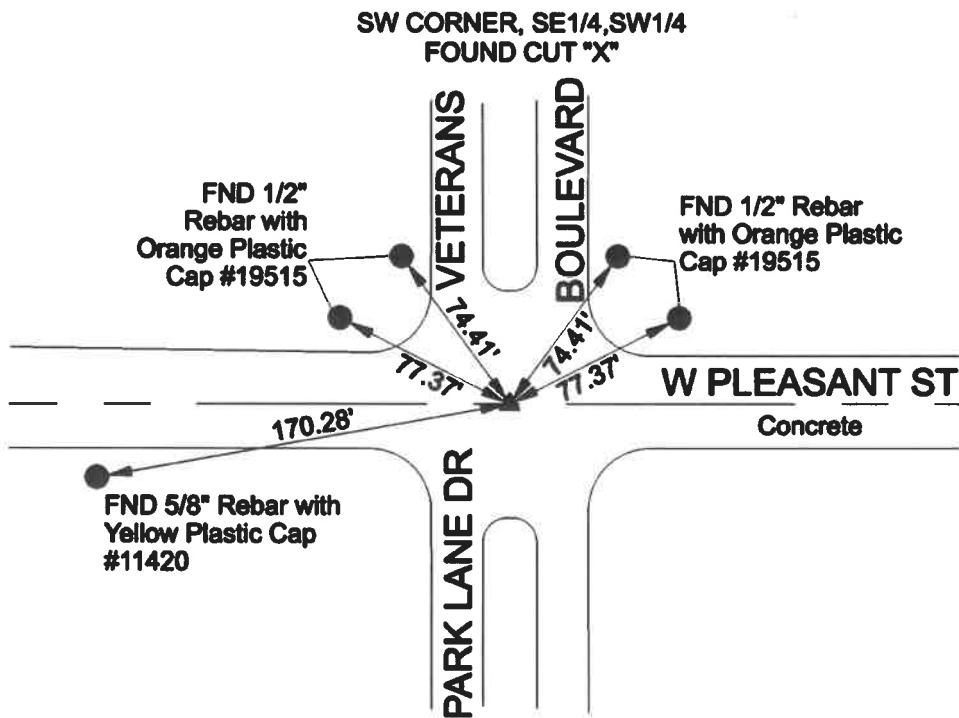
(Show reason for preparing this certificate, the evidence and detailed procedures used in establishing the corner positions and monumentation found or placed.)

Monument Description and Remarks:

NO PREVIOUS RECORDED CERTIFICATE OF MONUMENTATION WAS FOUND. USED PLAT OF SURVEY RECORDED IN BOOK 2011, PAGE 761 AND VISUAL SEARCH OF THE AREA TO FIND CUT "X" IN CONCRETE ROAD AS CALLED FOR IN PLAT. VERIFIED LOCATION OF MONUMENT WITH DIMENSIONS TO SURROUNDING MONUMENTS FROM PLAT AND ACCEPTED MONUMENT AS SECTION CORNER. THIS CERTIFICATE IS BEING FILED BECAUSE THERE IS NO CERTIFICATE FOR THE CORNER ON FILE.

Plan-View

(Show a minimum of three reference ties to durable physical objects, relevant monuments and physical conditions that will enable recovery of the corner.)



NOTE: ALL DISTANCES MEASURED HORIZONTAL UNLESS OTHERWISE NOTED.



I hereby certify that this land surveying document was prepared and the related survey work was performed by me or under my direct personal supervision and that I am a duly licensed Professional Land Surveyor under the laws of the State of Iowa.

Eric J. Miller 11/11/2025
 Eric J. Miller, PLS Date

License Number 19515

My License Renewal Date is December 31, 2026

Pages or sheets covered by this seal:

Sheet 1 of 1



2727 S.W. SNYDER BLVD
 ANKENY, IOWA 50023
 (515) 984-2020

PN:125.0627.01 (PT1004)

DATE: 11/11/25

PM/TECH: EJM/SDB

INDEX LEGEND

SURVEYOR'S NAME / RETURN TO:
 ERIC J. MILLER
 SNYDER & ASSOCIATES, INC.
 2727 SW SNYDER BOULEVARD
 ANKENY, IOWA 50023
 515-964-2020
 ERICMILLER@SNYDER-ASSOCIATES.COM
 SERVICE PROVIDED BY:
 SNYDER & ASSOCIATES, INC.

Instr. Number: 25-632
 BK: 2025 PG: 632
 Recorded: 2/14/2025 at 8:21:00.0 AM
 County Recording Fee: \$7.00
 Iowa E-Filing Fee: \$3.13
 Combined Fee: \$10.13
 Revenue Tax: \$0.00
 NAOMI ELLIS, RECORDER
 Marion County, Iowa

CORNERS TO BE INDEXED:

SECTION	TWP	RANGE	CORNERS
12	75N	20W	NE CORNER NW1/4-NW1/4
1	75N	20W	SE CORNER SW1/4-SW1/4

UNITED STATES PUBLIC LAND SURVEY CORNER CERTIFICATE

LAND SURVEY MONUMENT SITUATED IN SECTION 12, TOWNSHIP 75 NORTH,
 RANGE 20 WEST, OF THE FIFTH PRINCIPAL MERIDIAN, MARION COUNTY, IOWA.
 PREVIOUSLY RECORDED IN N/A IN THE COUNTY RECORDER'S OFFICE.

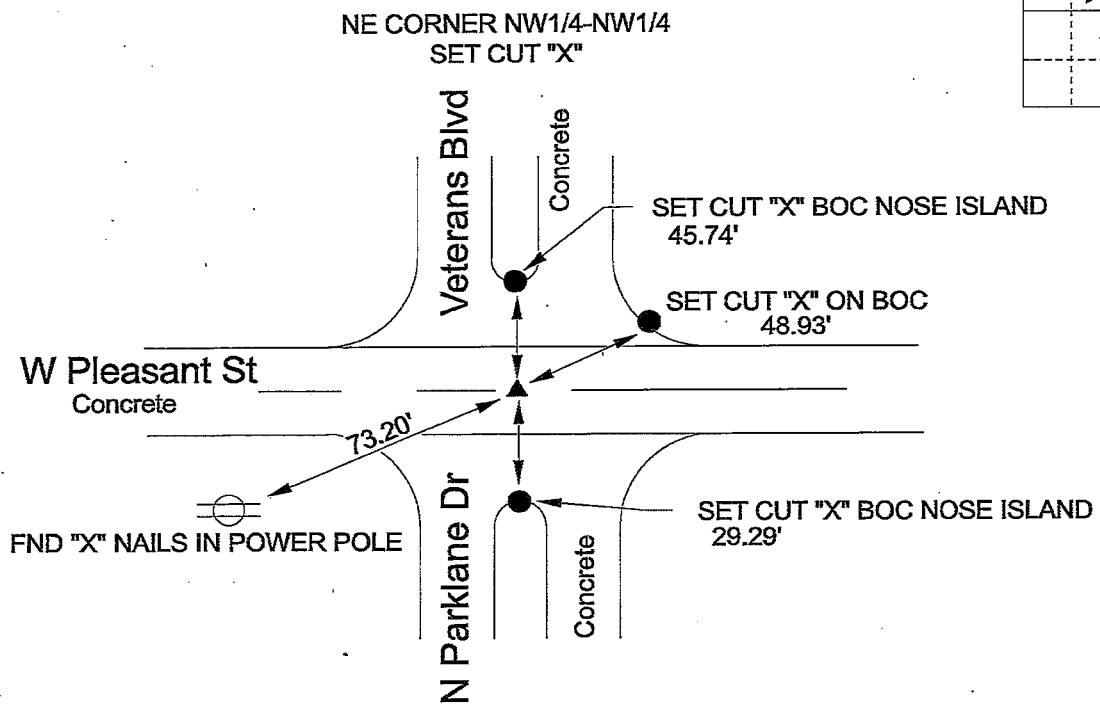
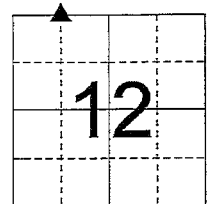
(Show reason for preparing this certificate, the evidence and detailed procedures used in establishing the corner positions and monumentation found or placed.)

Monument Description and Remarks:

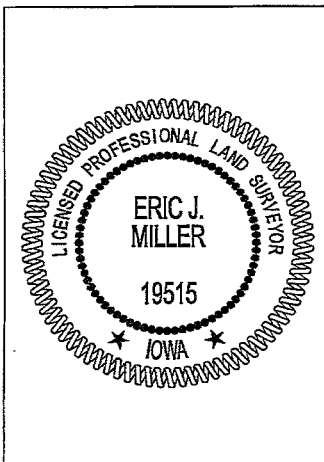
NO PREVIOUS RECORDED CERTIFICATE OF MONUMENTATION WAS FOUND. USED METAL DETECTOR AND VISUAL SEARCH OF AREA TO FIND A CUT "X" AT THE SURFACE EQUIDISTANT BETWEEN THE NORTHWEST CORNER AND NORTH CORNER AS CALLED FOR ON THE PLAT OF SURVEY RECORDED IN BK 2011, PG 761 AND ACCEPTED MONUMENT AS SECTION CORNER. THIS CERTIFICATE IS BEING FILED BECAUSE THERE IS NO CERTIFICATE ON FILE.

Plan-View

(Show a minimum of three reference ties to durable physical objects, relevant monuments and physical conditions that will enable recovery of the corner.)



NOTE: ALL DISTANCES MEASURED HORIZONTAL UNLESS OTHERWISE NOTED.



I hereby certify that this land surveying document was prepared and the related survey work was performed by me or under my direct personal supervision and that I am a duly licensed Professional Land Surveyor under the laws of the State of Iowa.

Eric J. Miller 2-13-25
 Eric J. Miller, PLS Date

License Number 19515
 My License Renewal Date is December 31, 2026

Pages or sheets covered by this seal:
 Sheet 1 of 1



2727 S.W. SNYDER BLVD PN:124.0291.01(PT#10)
 ANKENY, IOWA 50023 DATE: 02/13/25
 (515) 964-2020 PM/TECH: SRM/EJM

