

Instr. Number: 24-1939  
 BK: 2024 PG: 1939  
 Recorded: 5/20/2024 at 11:07:18.0 AM  
 County Recording Fee: \$7.00  
 Iowa E-Filing Fee: \$3.13  
 Combined Fee: \$10.13  
 Revenue Tax: \$0.00  
 NAOMI ELLIS, RECORDER  
 Marion County, Iowa

PREPARED BY & RETURN TO: SURVEYOR / McCLURE / 1360 NW 121ST STREET, CLIVE, IA 50325 / 515-964-1229

## U.S. PUBLIC LAND SURVEY CORNER CERTIFICATE

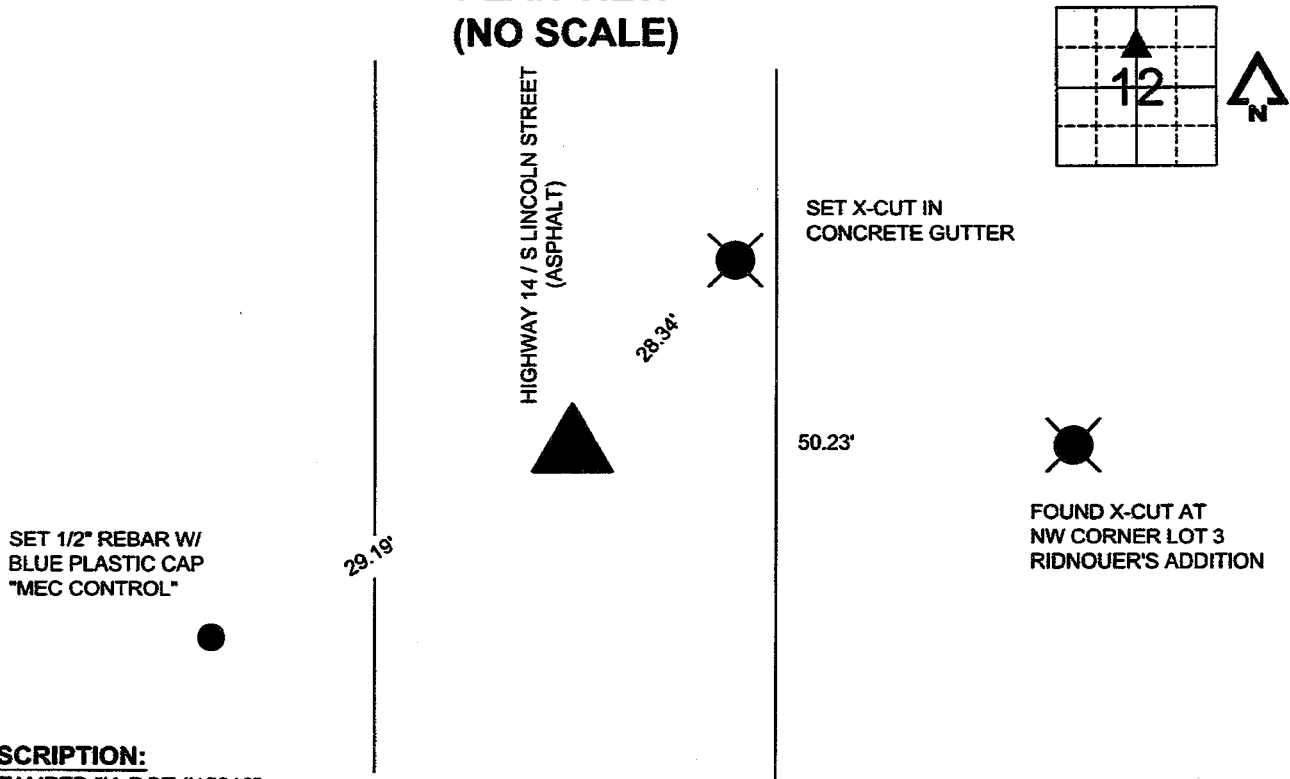
**REASON FOR PREPARING THIS CERTIFICATE:**

- CORNER RESTORATION (ACCEPTED OR PERPETUATED CORNER)
- CORNER ESTABLISHMENT (PLSS CORNER CREATED, BUT NOT MONUMENTED IN THE ORIGINAL SURVEY)
- CORNER REESTABLISHMENT (LOST CORNER)

LAND SURVEY MONUMENT(S) SITUATED IN SECTION 12, TOWNSHIP 75 NORTH, RANGE 20 WEST OF THE 5TH PRINCIPAL MERIDIAN, MARION COUNTY, IOWA. PREVIOUSLY RECORDED IN THE MARION COUNTY ENGINEER'S TIES. A PK NAIL WAS SET AND TIED OUT ON 6/3/2002.

MONUMENTS DESCRIPTION AND REMARKS: A BRASS PLUG STAMPED "IA DOT #15216" WAS FOUND AT THE CENTER NORTH SIXTEENTH CORNER POSITION AS DETERMINED BY RECORDED SUBDIVISION PLATS AND RETRACEMENT SURVEYS. THE COUNTY ENGINEER TIES LISTED IN THE 6/3/2002 NOTES WERE NOT FOUND, THUS NEW TIES WERE SET AS SHOWN BELOW.

### PLAN VIEW (NO SCALE)



**CORNER DESCRIPTION:**  
 BRASS PLUG STAMPED "IA DOT #15216"

### CORNERS TO BE INDEXED

CORNER	SEC.	TWP.	RGE.
CN1/16	12	T75N	R20W

DRAWING PATH: P:\2024\000765-000\04-Drawings\Survey\2024\000763 Boundary Base.dwg PLOT DATE: 05/16/2024 11:16 AM PLOTTED BY: STEVE ZIMMERMAN



335 SE Oralebor Road  
 Ankeny, Iowa 50021  
 515-512-1361



I HEREBY CERTIFY THAT THIS LAND SURVEYING DOCUMENT WAS PREPARED AND THE RELATED SURVEY WORK WAS PERFORMED BY ME OR UNDER MY DIRECT PERSONAL SUPERVISION AND THAT I AM A DULY LICENSED PROFESSIONAL LAND SURVEYOR UNDER THE LAWS OF THE STATE OF IOWA.

\_\_\_\_\_  
 DATE 5/17/24

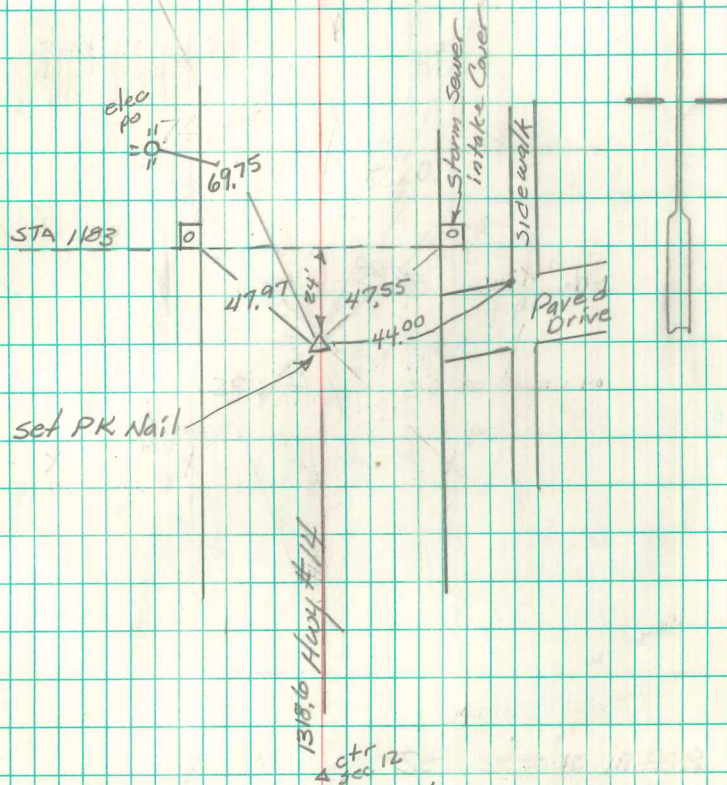
STEPHEN L. ZIMMERMAN II  
 MY LICENSE RENEWAL DATE IS DECEMBER 31, 2024

PAGES OR SHEETS COVERED BY THIS SEAL: THIS PAGE ONLY

DATE SURVEYED: 4/25/2024

NW COR SW 1/4 NE 1/4 SEC 12 - 75-20

Set PK nail on Centerline In Hwy #14 from  
references to DOT survey of R.O.W. dated 8/3/81



stone 15 - 0.16 Rt of  
sta 1182 + 75.08

set No. 1-83

Ret'd 6/3/02 Abie Davis