



Document 26-1408

Book 2026 Page 1408 Type CORNR Pages 1

Date 4/02/2026 Time 10:38 AM

Rec Amt \$7.00

NAOMI ELLIS, RECORDER  
MARION COUNTY IOWA



P.O. Box 451, Oskaloosa, Iowa 52577-0451 Phone: (641)672-2526

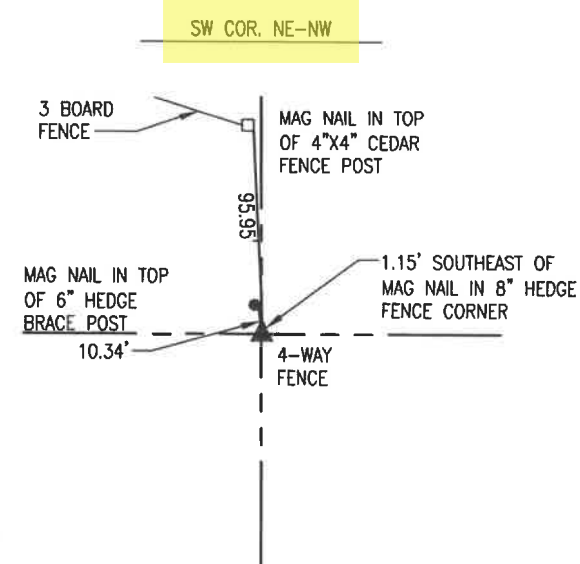
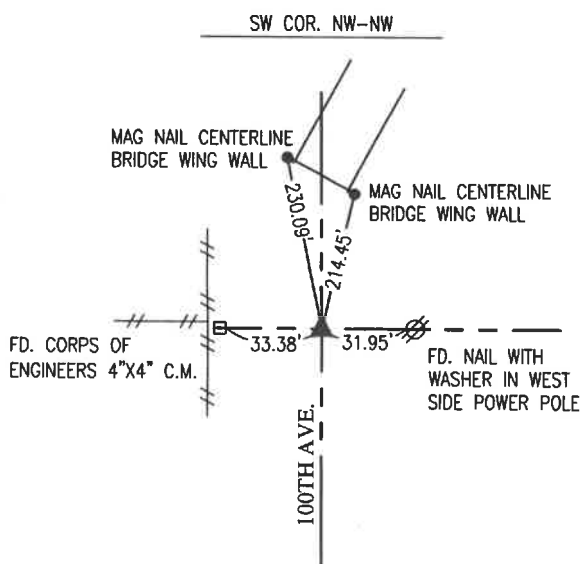
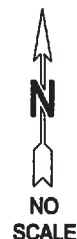
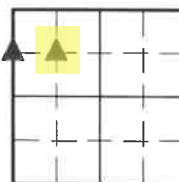
**UNITED STATES PUBLIC LAND SURVEY CORNER CERTIFICATE OF**

LAND SURVEY MONUMENTS SITUATED IN SECTION 15, TOWNSHIP 75 NORTH, RANGE 20 WEST,  
OF THE FIFTH PRINCIPAL MERIDIAN, MARION COUNTY, IOWA.

PREVIOUSLY RECORDED IN NO CERTIFICATE OF RECORD IN COUNTY RECORDER'S OFFICE.

MONUMENT DESCRIPTION AND REMARKS:

SEE BELOW



MARCH 2026  
 FOUND ARMY CORP CONC. MONUMENT 33 FEET WEST OF CORNER.  
 DUG 3'X3' HOLE 2' DEEP BUT DID NOT FIND MONUMENT.  
 ATTEMPTED TO CONTACT ROCK ISLAND OFFICE FOR RECORDS OF  
 THE CORNER BUT DID NOT RECEIVE A RESPONSE. SET 5/8" X  
 30" REBAR WITH YELLOW PLASTIC CAP #19960 ON LINE BETWEEN  
 THE WEST 1/4 CORNER AND NW CORNER OF SECTION IN LINE  
 WITH SAID C.M. THIS POSITION LINES UP WITH FENCE EAST ALSO.

MARCH 2026  
 SET 5/8" X 30" REBAR WITH YELLOW PLASTIC CAP #19960 ON  
 LINE BETWEEN THE SE CORNER OF THE NW-NE AND THE SW  
 CORNER OF THE NW-NW IN LINE WITH FENCE NORTH. THIS  
 POSITION FELL APPROXIMATELY 1 FOOT SOUTH OF EXISTING FENCE  
 CORNER.

I hereby certify that this land surveying document was prepared and the related survey work was performed by me or under my direct personal supervision and that I am a duly licensed Professional Land Surveyor under the laws of the State of Iowa.



*Bobby J. Maddaleno* 3-25-26  
 Bobby J. Maddaleno, P.L.S. Date  
 License number: 19960  
 My license renewal date is December 31, 2027

LIST CORNERS TO BE INDEXED

CORNERS	SECTION	TOWNSHIP	RANGE
SW COR. NW-NW	15	75	20
SW COR. NE-NW	15	75	20

Pd \$700 ck - Ret Garden Env