



Document 26-1408

Book 2026 Page 1408 Type CORNR Pages 1

Date 4/02/2026 Time 10:38 AM

Rec Amt \$7.00

NAOMI ELLIS, RECORDER
MARION COUNTY IOWA



P.O. Box 451, Oskaloosa, Iowa 52577-0451 Phone: (641)672-2526

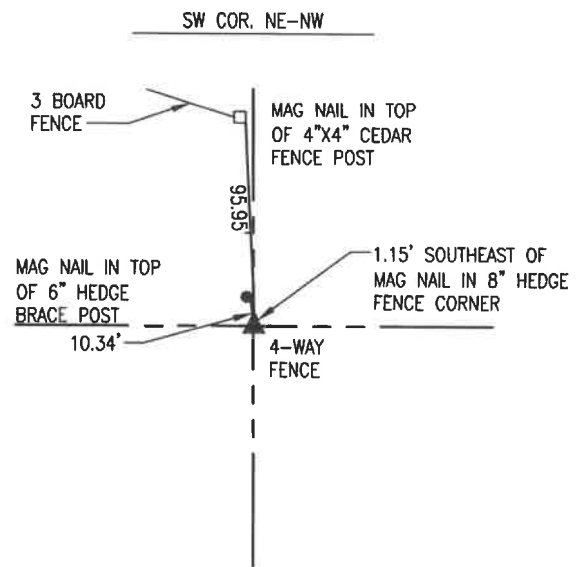
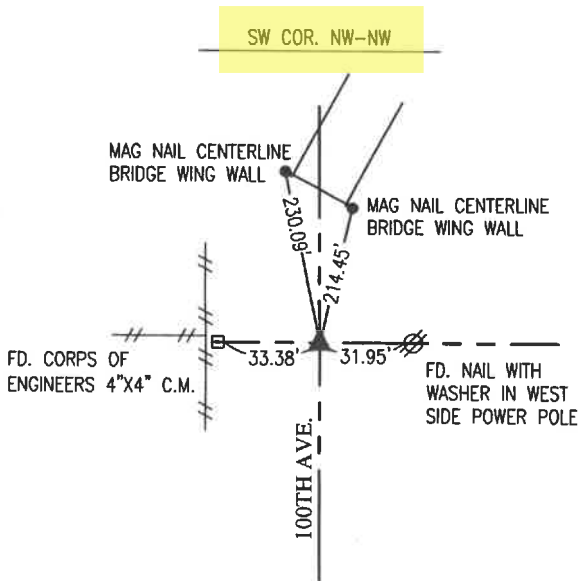
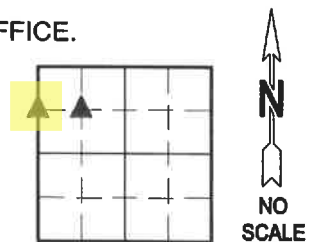
UNITED STATES PUBLIC LAND SURVEY CORNER CERTIFICATE OF

LAND SURVEY MONUMENTS SITUATED IN SECTION 15, TOWNSHIP 75 NORTH, RANGE 20 WEST,
OF THE FIFTH PRINCIPAL MERIDIAN, MARION COUNTY, IOWA.

PREVIOUSLY RECORDED IN NO CERTIFICATE OF RECORD IN COUNTY RECORDER'S OFFICE.

MONUMENT DESCRIPTION AND REMARKS:

SEE BELOW



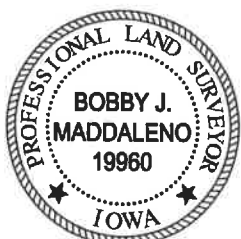
MARCH 2026
 FOUND ARMY CORP CONC. MONUMENT 33 FEET WEST OF CORNER.
 DUG 3'X3' HOLE 2' DEEP BUT DID NOT FIND MONUMENT.
 ATTEMPTED TO CONTACT ROCK ISLAND OFFICE FOR RECORDS OF
 THE CORNER BUT DID NOT RECEIVE A RESPONSE. SET 5/8" X
 30" REBAR WITH YELLOW PLASTIC CAP #19960 ON LINE BETWEEN
 THE WEST 1/4 CORNER AND NW CORNER OF SECTION IN LINE
 WITH SAID C.M. THIS POSITION LINES UP WITH FENCE EAST ALSO.

MARCH 2026
 SET 5/8" X 30" REBAR WITH YELLOW PLASTIC CAP #19960 ON
 LINE BETWEEN THE SE CORNER OF THE NW-NE AND THE SW
 CORNER OF THE NW-NW IN LINE WITH FENCE NORTH. THIS
 POSITION FELL APPROXIMATELY 1 FOOT SOUTH OF EXISTING FENCE
 CORNER.

I hereby certify that this land surveying document was prepared and the related survey work was performed by me or under my direct personal supervision and that I am a duly licensed Professional Land Surveyor under the laws of the State of Iowa.

LIST CORNERS TO BE INDEXED

CORNERS	SECTION	TOWNSHIP	RANGE
SW COR. NW-NW	15	75	20
SW COR. NE-NW	15	75	20



Bobby J. Maddaleno 3-25-26
 Bobby J. Maddaleno, P.L.S. Date
 License number: 19960
 My license renewal date is December 31, 2027

Pd \$700 ck - Ret Garden Env