



Document 24-5412

Book 2024 Page 5412 Type CORNR Pages 1
Date 12/20/2024 Time 11:22 AM
Rec Amt \$7.00

NAOMI ELLIS, RECORDER
MARION COUNTY IOWA



P.O. Box 451, Oskaloosa, Iowa 52577-0451 Phone: (641)672-2526

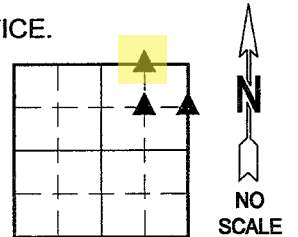
UNITED STATES PUBLIC LAND SURVEY CORNER CERTIFICATE OF

LAND SURVEY MONUMENTS SITUATED IN SECTION 24, TOWNSHIP 75, RANGE 20,
OF THE FIFTH PRINCIPAL MERIDIAN, MARION COUNTY, IOWA.

PREVIOUSLY RECORDED IN NO CERTIFICATE OF RECORD IN COUNTY RECORDER'S OFFICE.

MONUMENT DESCRIPTION AND REMARKS:

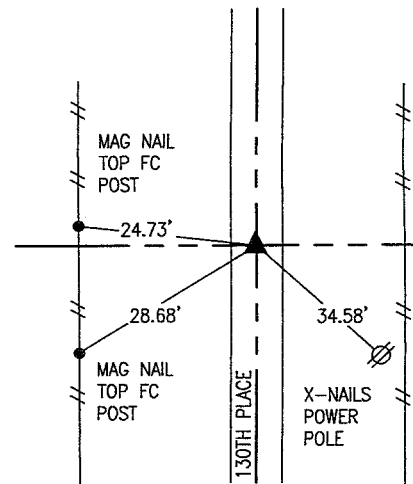
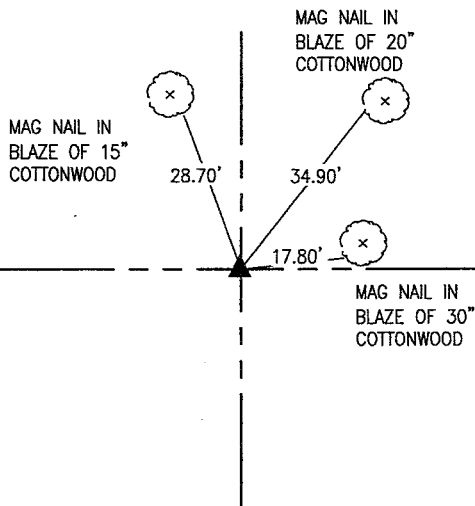
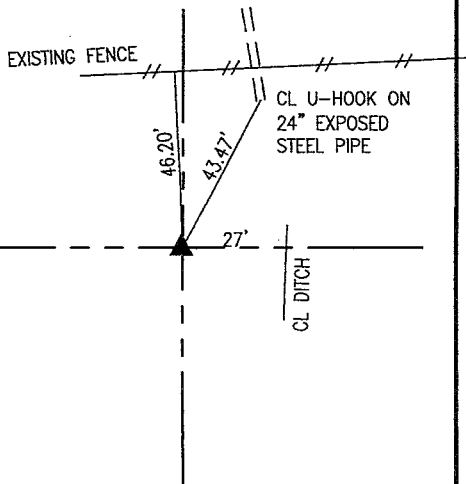
SEE BELOW



NW COR NE-NE

SW COR NE-NE

SE COR NE-NE



NOV. 2024
SET 5/8" REBAR #19960 AT THE MIDPOINT
OF A LINE CONNECTING THE NORTH 1/4
CORNER AND NE CORNER OF SECTION.

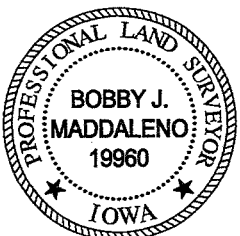
NOV. 2024
SET 5/8" REBAR #19960 AT THE
INTERSECTION OF LINES CONNECTING THE
CALCULATED POSITION FOR OPPOSING
1/4-1/4 CORNERS.

NOV. 2024
SET 5/8" REBAR #19960 AT THE MIDPOINT
OF A LINE CONNECTING THE EAST 1/4
CORNER AND NE CORNER OF SECTION.

I hereby certify that this land surveying document was prepared and the related survey work was performed by me or under my direct personal supervision and that I am a duly licensed Professional Land Surveyor under the laws of the State of Iowa.

LIST CORNERS TO BE INDEXED

CORNERS	SECTION	TOWNSHIP	RANGE
NW COR NE-NE	24	75	20
SW COR NE-NE	24	75	20
SE COR NE-NE	24	75	20



Bobby J. Maddaleno 12-17-24
Bobby J. Maddaleno, P.L.S. Date
License number: 19960
My license renewal date is December 31, 2025

pd \$700 check - Ret G+A ENV