



Document 24-2844

Book 2024 Page 2844 Type CORNR Pages 1

Date 7/12/2024 Time 10:31 AM

Rec Amt \$7.00

NAOMI ELLIS, RECORDER  
MARION COUNTY IOWA



P.O. Box 451, Oskaloosa, Iowa 52577-0451 Phone: (641)672-2526

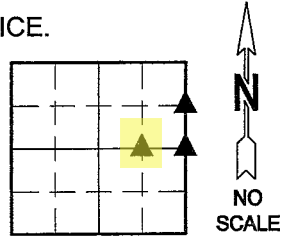
UNITED STATES PUBLIC LAND SURVEY CORNER CERTIFICATE OF

LAND SURVEY MONUMENTS SITUATED IN SECTION 25, TOWNSHIP 75, RANGE 20,  
OF THE FIFTH PRINCIPAL MERIDIAN, MARION COUNTY, IOWA.

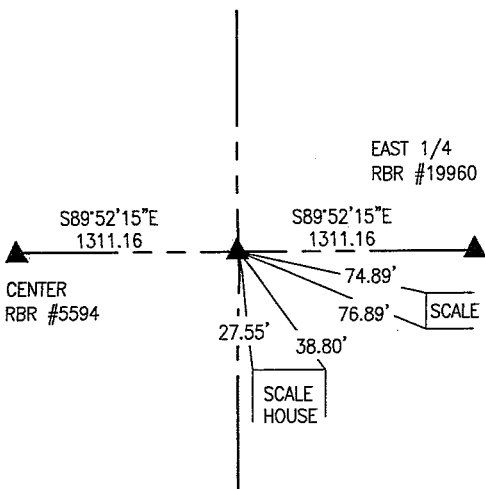
PREVIOUSLY RECORDED IN NO CERTIFICATE OF RECORD IN COUNTY RECORDER'S OFFICE.

MONUMENT DESCRIPTION AND REMARKS:

SEE BELOW

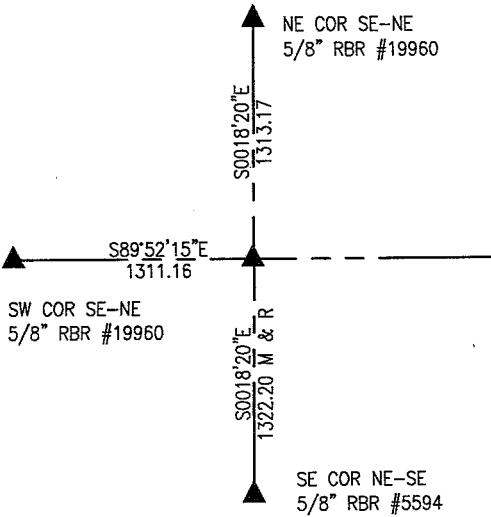


SW COR SE-NE



JUNE 2024  
SET A 5/8" REBAR WITH YELLOW PLASTIC CAP #19960 AT THE MIDPOINT OF A LINE CONNECTING THE CENTER AND EAST 1/4 CORNER. THIS POSITION LINES UP WITHIN 2 FEET OF FENCE TO THE SOUTH. THIS CORNER WAS ESTABLISHED IN CONJUNCTION WITH WORK TO MARK LEASE LINES IN THE SE-NE OF SEC. 25-75-20. ALL BEARING SHOWN ON THIS CORNER CERTIFICATE ARE IRCS ZONE 9.

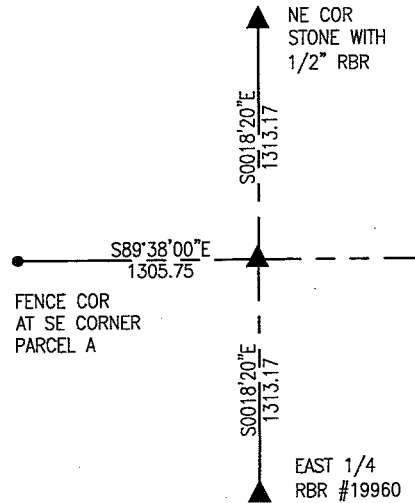
EAST 1/4 COR



JUNE 1996  
THE EAST 1/4 HAD BEEN OBLITERATED BY ROCK QUARRY EXCAVATIONS. LS 5594 CALCULATED THE POSITION AS SHOWN ON THE PLAT OF SURVEY RECORDED IN BOOK 246 ON PAGE 268, BUT DID NOT SET A MONUMENT.

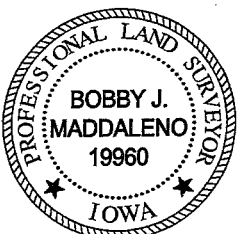
JUNE 2024  
SET 5/8" REBAR ON LINE BETWEEN THE SOUTHEAST CORNER OF THE NE-SE AND THE NORTHEAST CORNER OF SECTION AT RECORD DISTANCE AS SHOWN ON THE PLAT ABOVE. THERE ARE NO DURABLE TIES IN THE VICINITY OF THE CORNER.

NE COR SE-NE



JUNE 2024  
SET A 5/8" REBAR WITH YELLOW PLASTIC CAP #19960 AT THE MIDPOINT OF A LINE CONNECTING THE EAST 1/4 CORNER AND NE CORNER OF SECTION. THERE ARE NO DURABLE TIES IN THE VICINITY OF THE CORNER.

I hereby certify that this land surveying document was prepared and the related survey work was performed by me or under my direct personal supervision and that I am a duly licensed Professional Land Surveyor under the laws of the State of Iowa.



*Bobby J. Maddaleno* 7-3-24  
Bobby J. Maddaleno, P.L.S. Date  
License number: 19960  
My license renewal date is December 31, 2025

LIST CORNERS TO BE INDEXED

CORNERS	SECTION	TOWNSHIP	RANGE
SW COR SE-NE	25	75	20
EAST 1/4 COR	25	75	20
NE COR SE-NE	25	75	20

Pl # 700-OK - Rex Garden & Assoc. Env.

$N\frac{1}{4}$  -  $SE\frac{1}{4}$  Sec 25-75-20

