



Document 25-2109

Book 2025 Page 2109 Type CORNR Pages 1  
Date 5/20/2025 Time 12:42 PM  
Rec Amt \$7.00

NAOMI ELLIS, RECORDER  
MARION COUNTY IOWA



P.O. Box 451, Oskaloosa, Iowa 52577-0451 Phone: (641)672-2526

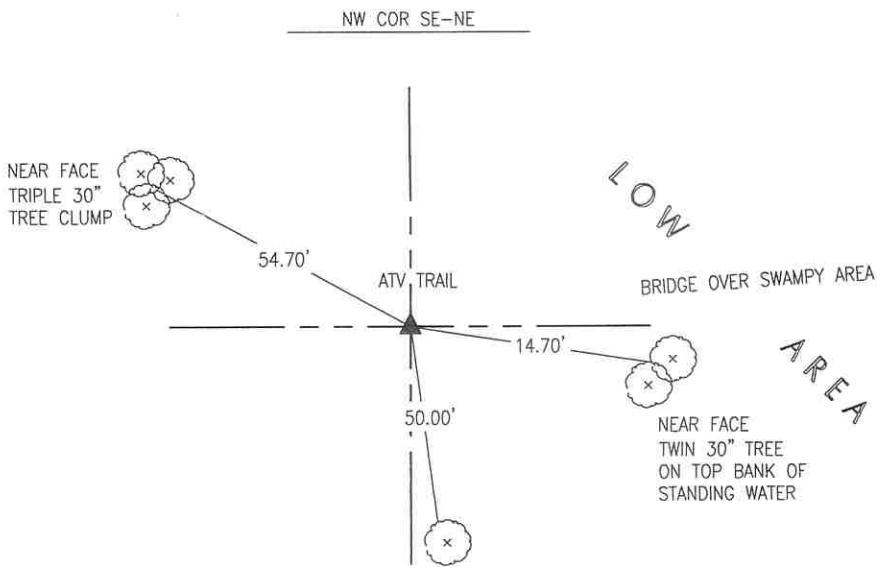
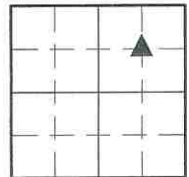
UNITED STATES PUBLIC LAND SURVEY CORNER CERTIFICATE OF

LAND SURVEY MONUMENTS SITUATED IN SECTION 27, TOWNSHIP 75, RANGE 20,  
OF THE FIFTH PRINCIPAL MERIDIAN, MARION COUNTY, IOWA.

PREVIOUSLY RECORDED IN NO CERTIFICATE OF RECORD IN COUNTY RECORDER'S OFFICE.

MONUMENT DESCRIPTION AND REMARKS:

SEE BELOW



MAY 2025  
THERE ARE NO FENCES IN THE VICINITY OF THE CORNER. SET A 5/8"  
REBAR WITH YELLOW CAP #19960 AT THE MIDPOINT OF A LINE  
CONNECTING THE NW CORNER SW - NE AND THE NE CORNER SE - NE.

I hereby certify that this land surveying document was prepared and the related survey work was performed by me or under my direct personal supervision and that I am a duly licensed Professional Land Surveyor under the laws of the State of Iowa.

LIST CORNERS TO BE INDEXED

CORNERS	SECTION	TOWNSHIP	RANGE
NW COR SE-NE	27	75	20



*Bobby J. Maddaleno* 5-15-25  
Bobby J. Maddaleno, P.L.S. Date  
License number: 19960  
My license renewal date is December 31, 2025

*Pl # 700 CK - Red Garden Env.*