



Document 24-5316

Book 2024 Page 5316 Type CORNR Pages 1

Date 12/16/2024 Time 12:44 PM

Rec Amt \$7.00

NAOMI ELLIS, RECORDER
MARION COUNTY IOWA

GA GARDEN & ASSOC.

P.O. Box 451, Oskaloosa, Iowa 52577-0451 Phone: (641)672-2526

UNITED STATES PUBLIC LAND SURVEY CORNER CERTIFICATE OF

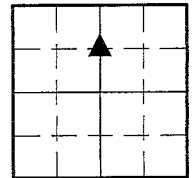
LAND SURVEY MONUMENTS SITUATED IN SECTION 35, TOWNSHIP 75, RANGE 20,

OF THE FIFTH PRINCIPAL MERIDIAN, MARION COUNTY, IOWA.

PREVIOUSLY RECORDED IN NO CERTIFICATE OF RECORD IN COUNTY RECORDER'S OFFICE.

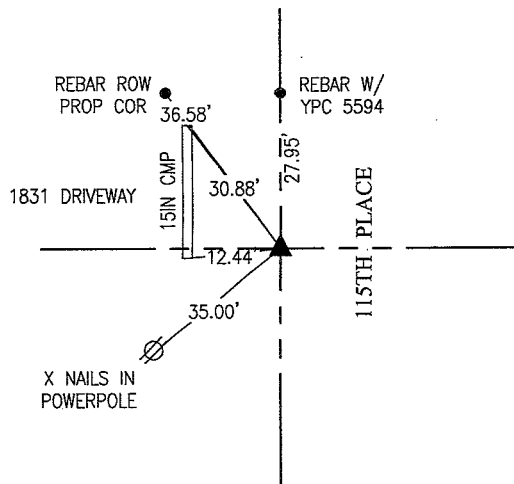
MONUMENT DESCRIPTION AND REMARKS:

SEE BELOW



NO SCALE

SE CORNER NE-NW



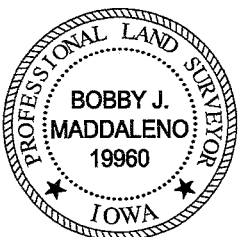
NOVEMBER 2024

THERE ARE NO FENCES IN THE VICINITY OF THE CORNER. LS 5595 CALCULATED THE LOCATION MIDWAY BETWEEN THE NORTH 1/4 CORNER AND CENTER OF SECTION AS SHOWN ON PLAT OF SURVEY RECORDED IN BOOK 2005 ON PAGE 2577 BUT DID NOT SET A MONUMENT. SET 5/8" REBAR WITH YELLOW CAP #19960 AT THE MIDPOINT OF A LINE CONNECTING THE NORTH 1/4 CORNER AND CENTER OF SECTION AND TIED OUT CORNER.

I hereby certify that this land surveying document was prepared and the related survey work was performed by me or under my direct personal supervision and that I am a duly licensed Professional Land Surveyor under the laws of the State of Iowa.

LIST CORNERS TO BE INDEXED

CORNERS	SECTION	TOWNSHIP	RANGE
SE CORNER NE - NW	35	75	20



Bobby J. Maddaleno 12-11-24
Bobby J. Maddaleno, P.L.S. Date
License number: 19960
My license renewal date is December 31, 2025

PJ #700 CK - Ret Garden Env.