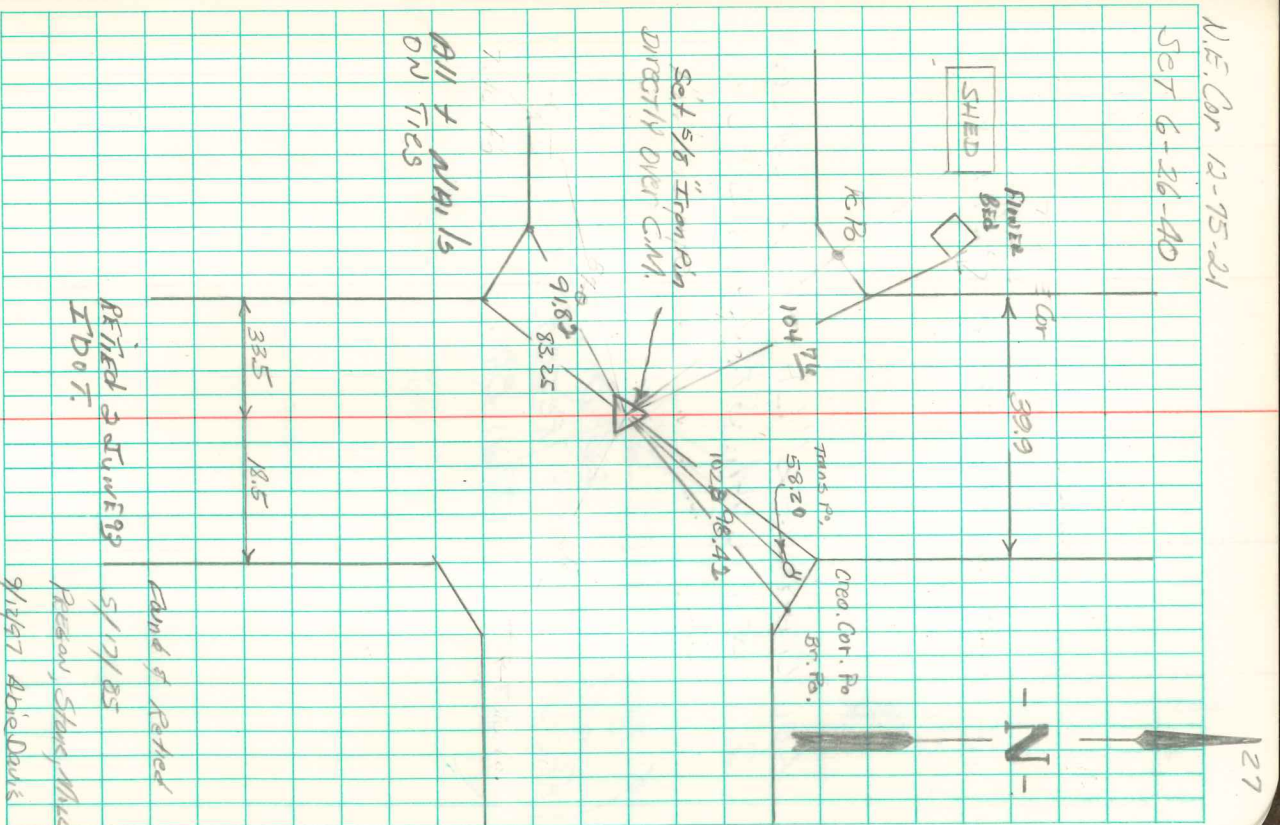


Found Sandstone 12" x 8" x 6" one 2" O
 TILE over ASSORTMENT OF ROCK, CRACKERY,
 pieces of Bldg Tile and pieces of
 round tile.

Lowered 2" O tile in place and SET
 C.M. ASSORTMENT around base of C.M.
 placed Stone on E.S. CM 2" deep.

N.E. Cor 12-75-21

SET 6-26-40



Hand of Retired
 5/17/85
 Reason, Stans, Mike
 9/17/87 Abie Davis
 4/14/2008 I.D.O.T.