



Document 18-428

Book 2018 Page 428 Type CORNR Pages 1
Date 1/30/2018 Time 10:23 AM
Rec Amt \$7.00

KAREN SCHWANEBECK, RECORDER
MARION COUNTY IOWA

Prepared By: J. Brian Morrissey, Morrissey Surveying & Consulting, LLC, 1405 Hwy. G28, Otley, Ia. 50214, 515-480-2531

UNITED STATES PUBLIC LAND SURVEY CORNER CERTIFICATE OF

Land Survey Monuments situated in Section 19, Township 75N, Range 21W, of the Fifth Principal Meridian, Marion County, Iowa.
Previously recorded in Bk. 1, P. 253 in the County Recorder's Office.

(book, page, document number, etc.)

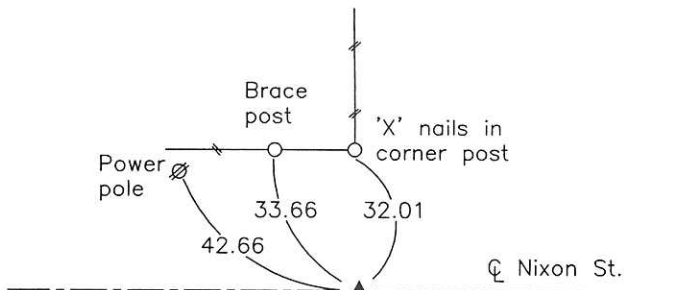
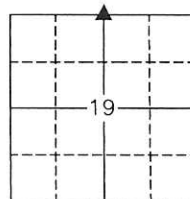
(Show reason for preparing this certificate, the evidence and detailed procedures used in establishing the corner positions and monumentation found or placed.)

Monument Description and Remarks: Found base 4" x 4" WPA concrete monument, set mag nail in top of base, 1/2" rebar found on north side as per previous Certificate. Pervious ties altered or obliterated.

This Corner was used for a Retracement Plat of Survey in the E 1/4 of the NW 1/4 of Sec. 19, recorded in Bk. 2017, P. 945.

PLAN VIEW

(Show a minimum of three reference ties to durable physical objects, relevant monuments and physical conditions that will enable recovery of the corner.)

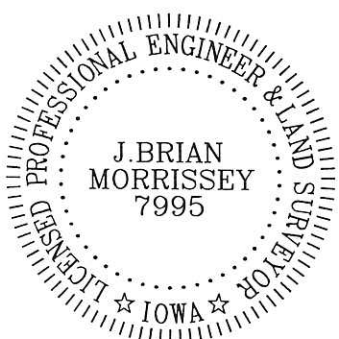


Found base 4" x 4" WPA concrete monument, set mag nail in top of base, 1/2" rebar found on north side.

N 1/4 Corner, Section 19

Date of Survey: 2/1/17

NOTE: ALL TIES TO BRASS DISK OR YELLOW/ORANGE SURVEY MARKER UNLESS NOTED.



I hereby certify that this land surveying document was prepared and the related survey work was performed by me or under my direct personal supervision and that I am a duly Licensed Land Surveyor under the laws of the state of Iowa.

Signature: J. Brian Morrissey Date: 1/29/18
J. Brian Morrissey

License number 7995.

My license renewal date is December 31, 2019

888-16-1/5

PLS 700 ex - Ret Morrissey Surveying

Established Cor.

Dug hole 8'x8'x2.5' Deep at a
Point middle way between sec. corners
& double the Distances of East
 $\frac{1}{4}$ mile in center of 50' Highway
& on Line between sec. corners.
This Point is in a 3' Roadcut &
stone was Graded out as No
evidence was Found. Established
Corner on Line between sec. corners
& on Line with Fence North

Set C.M. over 1-2 D. Tile.

2542.0 E. of C.M. at N.W. Cor SEC

2654.0 W. " C.M. at N.E. " "

1320.0 E. of E South

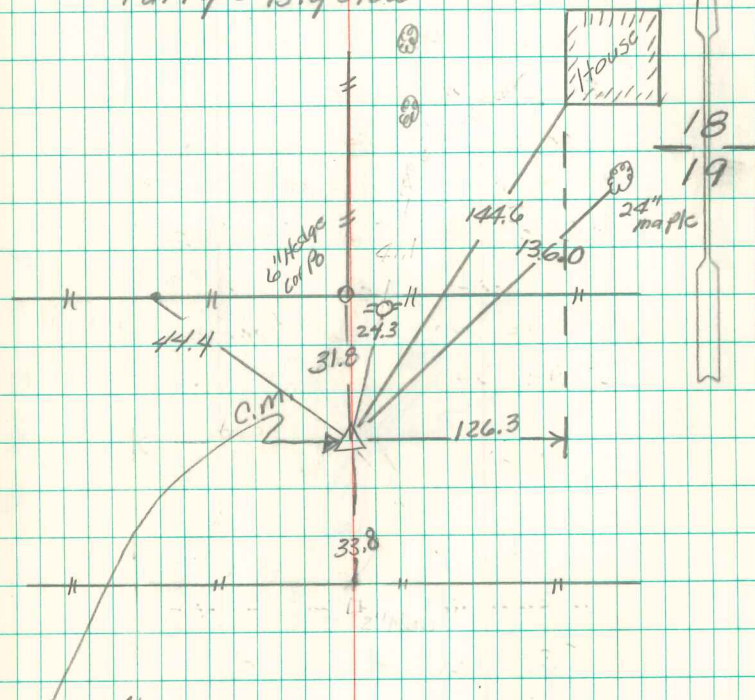
665.0 " " " "

N $\frac{1}{4}$ Cor 19-75-21

Set - July - 20-41

Notes - E. R. Barker

Party - Bigelow



Found cm flush with road
Top 12" broken & leaning West.
Set $\frac{1}{2}$ " iron pin on W. side.