



Document 20-4709

Book 2020 Page 4709 Type CORNR Pages 1

Date 8/24/2020 Time 12:33 PM

Rec Amt \$7.00

KAREN SCHWANEBECK, RECORDER  
MARION COUNTY IOWA

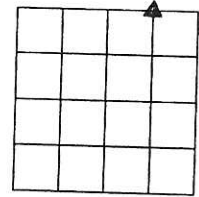
Prepared by Abie C. Davis, P.E. & L.S., 1428 Oregon St., Knoxville, IA 50138 (641) 842-5863

# UNITED STATES PUBLIC LAND SURVEY CORNER CERTIFICATE OF

Land survey Monuments situated in Section 20, Township 75N, Range 21W, of the Fifth Principal Meridian, Marion County, Iowa.

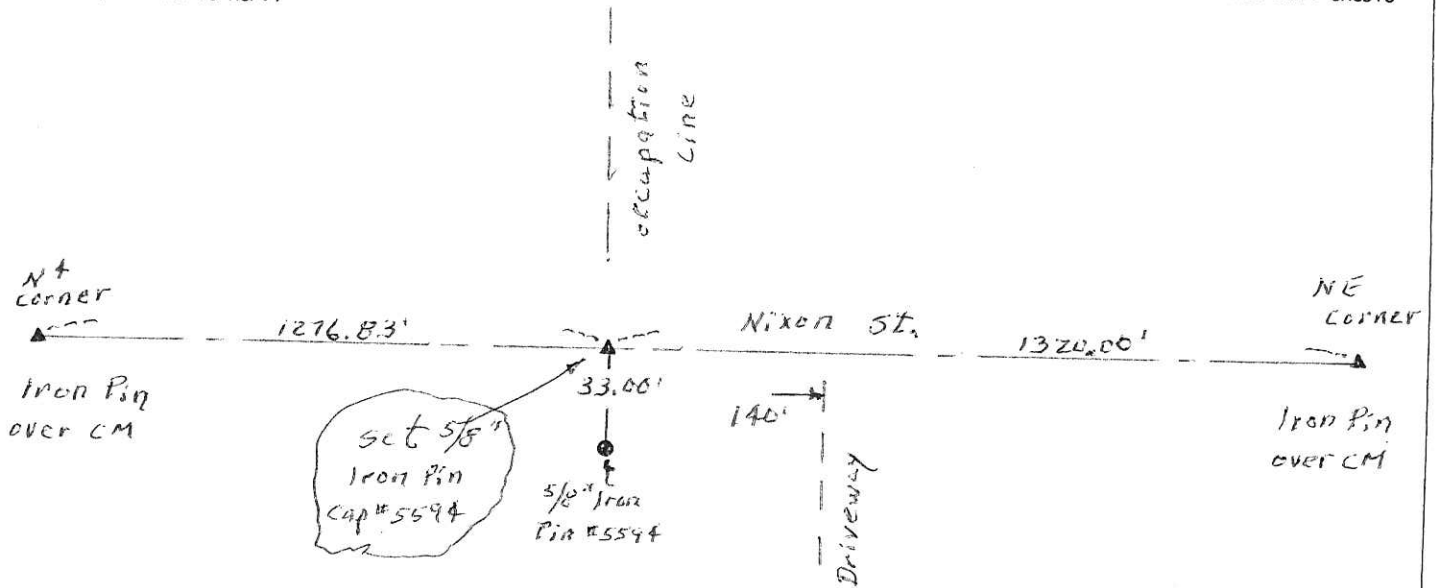
Previously recorded in N/A in County Recorders Office.  
Show reason for preparing this certificate, the evidence and detailed procedures used in establishing the corner positions and monumentation found or placed (book, page, document number, etc.)

Monument Description and Remarks: set corner on  
line between NE corner & the N<sup>+</sup> corner and  
in line with land occupation line north.



## PLAN - VIEW

(Show a minimum of three reference ties to durable physical objects, relevant monuments and physical conditions that will enable recovery of the corner.)



I hereby certify that the survey work was completed and this land surveying document was prepared by me or under my direct personal supervision and that I am a duly licensed land surveyor under the laws of the state of Iowa

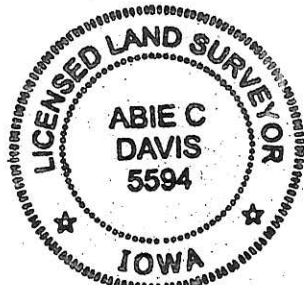
Signature: Abie C. Davis

Abie C. Davis, P.E. & L.S.

Date: 8/21/20 Reg. No. 5594

My license renewal date is December 31, 2021

SEAL



List Corners to be Indexed

Corners	Section	Twp	Range
NW CORN	20	75N	21W
NE+NE+			

ed. # 7- each. Set Abie Davis