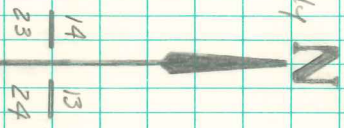
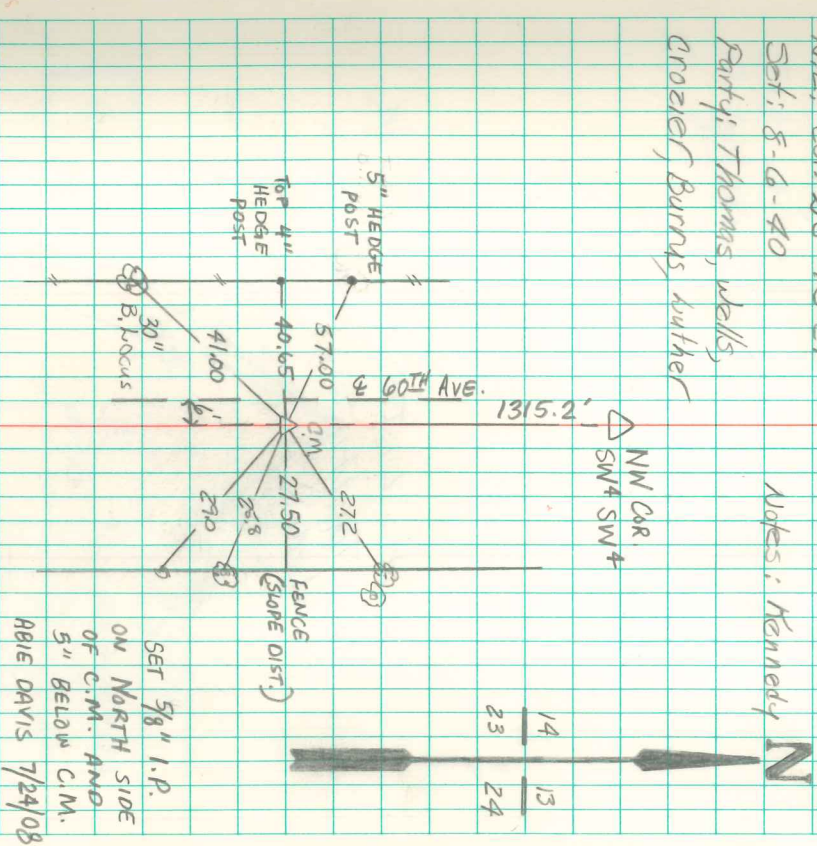


Found - - -

Set Mon. over sandstone and
8" tile gas pipe in center. Sandstone
below

N.E. Cor. 23-75-21
Set: 8-6-40
Party: Thomas, Wells,
Crozier, Burrows, Auether

Notes: Kennedy



SET 5/8" I.P.
ON NORTH SIDE
OF C.M. AND
5" BELOW C.M.
ABLE DAVIS 7/24/08