

KAREN SCHWANEBECK, RECORDER  
MARION COUNTY IOWA

Prepared by: Mark A. McMurphy, Abaci Consulting Inc, 101 NE Circle Dr, Grimes IA, 50111; (515)986-5048

# UNITED STATES PUBLIC LAND SURVEY CORNER CERTIFICATE

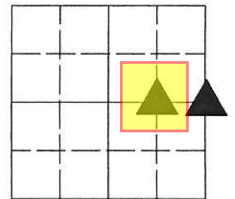
of

LAND SURVEY MONUMENTS SITUATED IN SECTION 36, TOWNSHIP 75 N, RANGE 21 W, of the Fifth Principal Meridian, Marion County, Iowa.

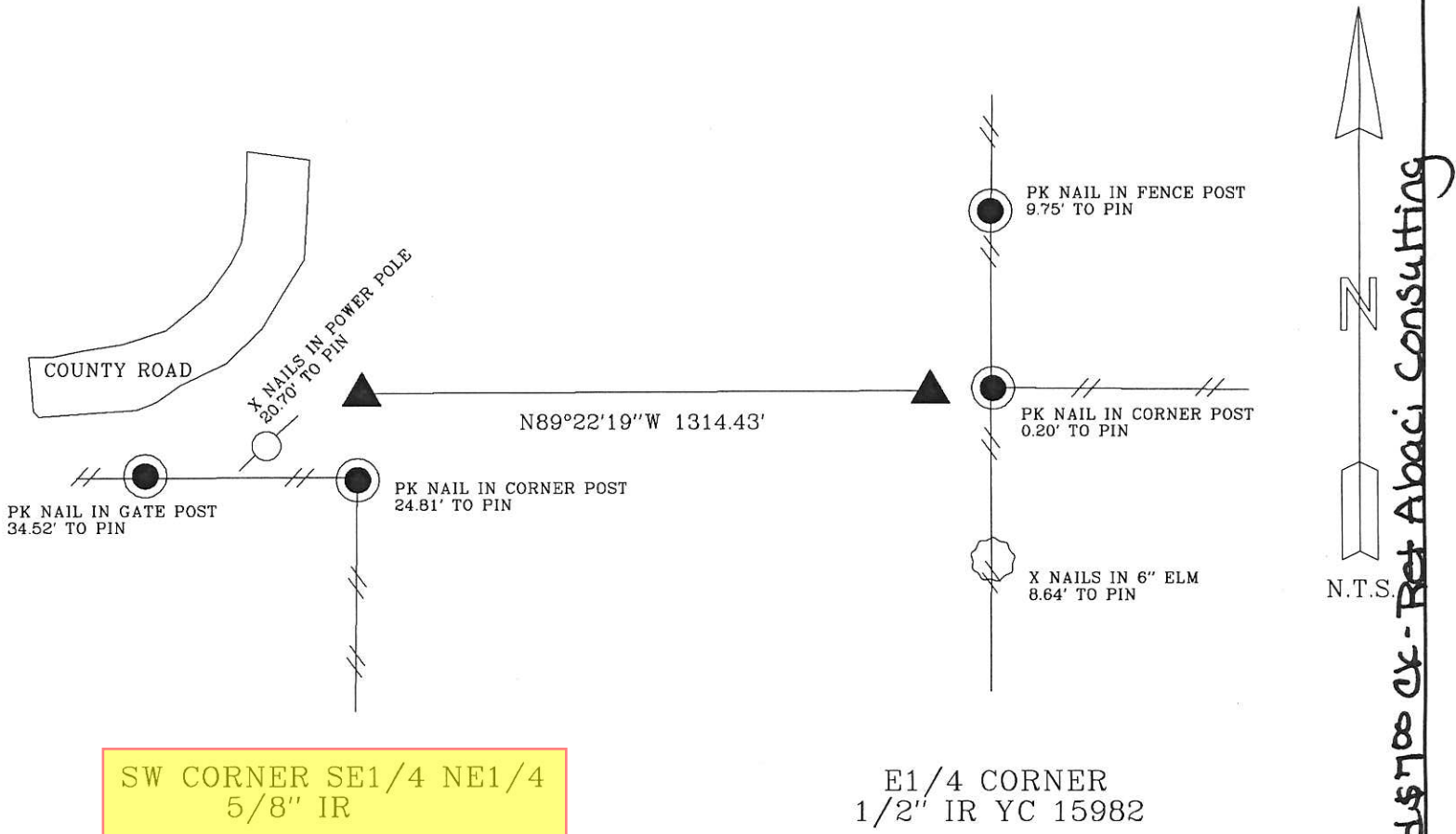
### Monument Description & Remarks:

East 1/4 corner - Set 1/2" IR West of three way fence intersection running North, South and East  
SW corner of the SE1/4 NE1/4- found 5/8" IR, no ties of record

## PLAN VIEW



36-75-21



SW CORNER SE1/4 NE1/4  
5/8" IR

E1/4 CORNER  
1/2" IR YC 15982

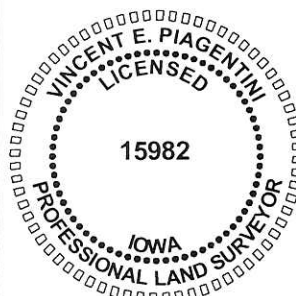
WASKER, 16379

I HEREBY CERTIFY THAT THIS SURVEYING DOCUMENT WAS PREPARED AND THE RELATED WORK WAS PERFORMED BY ME OR UNDER MY DIRECT PERSONAL SUPERVISION, AND THAT I AM A DULY LICENSED PROFESSIONAL LAND SURVEYOR UNDER THE LAWS OF THE STATE OF IOWA.

*Vincent E. Piagentini* 7/16/16  
VINCENT E. PIAGENTINI, IOWA LIC. NO 15982 DATE

MY LICENSE RENEWAL DATE IS DECEMBER 31, 2016.

ADDITIONAL PAGES CERTIFIED (NONE UNLESS INDICATED HERE)                      This sheet only.



Corners to be Indexed:			
Corner	Section	Twp	Range
E1/4 CORNER	36	T75N	R21W
W1/4 CORNER	31	T75N	R20W
SW CORNER SE1/4 NE1/4	36	T75N	R21W

Pd \$700 CX - Ret Abaci Consulting

SE COR. SW<sup>1</sup>/<sub>4</sub> NE<sup>1</sup>/<sub>4</sub> SEC. 36-75-21

69

Set BY DAVE HILLER

FEB. 19, 1987

N

