

KAREN SCHWANEBECK, RECORDER
MARION COUNTY IOWA

Prepared by: Mark A. McMurphy, Abaci Consulting Inc, 101 NE Circle Dr, Grimes IA, 50111; (515)986-5048

UNITED STATES PUBLIC LAND SURVEY CORNER CERTIFICATE

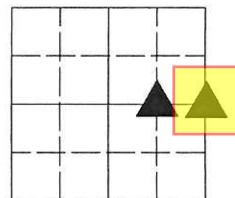
of

LAND SURVEY MONUMENTS SITUATED IN SECTION 36, TOWNSHIP 75 N, RANGE 21 W, of the Fifth Principal Meridian, Marion County, Iowa.

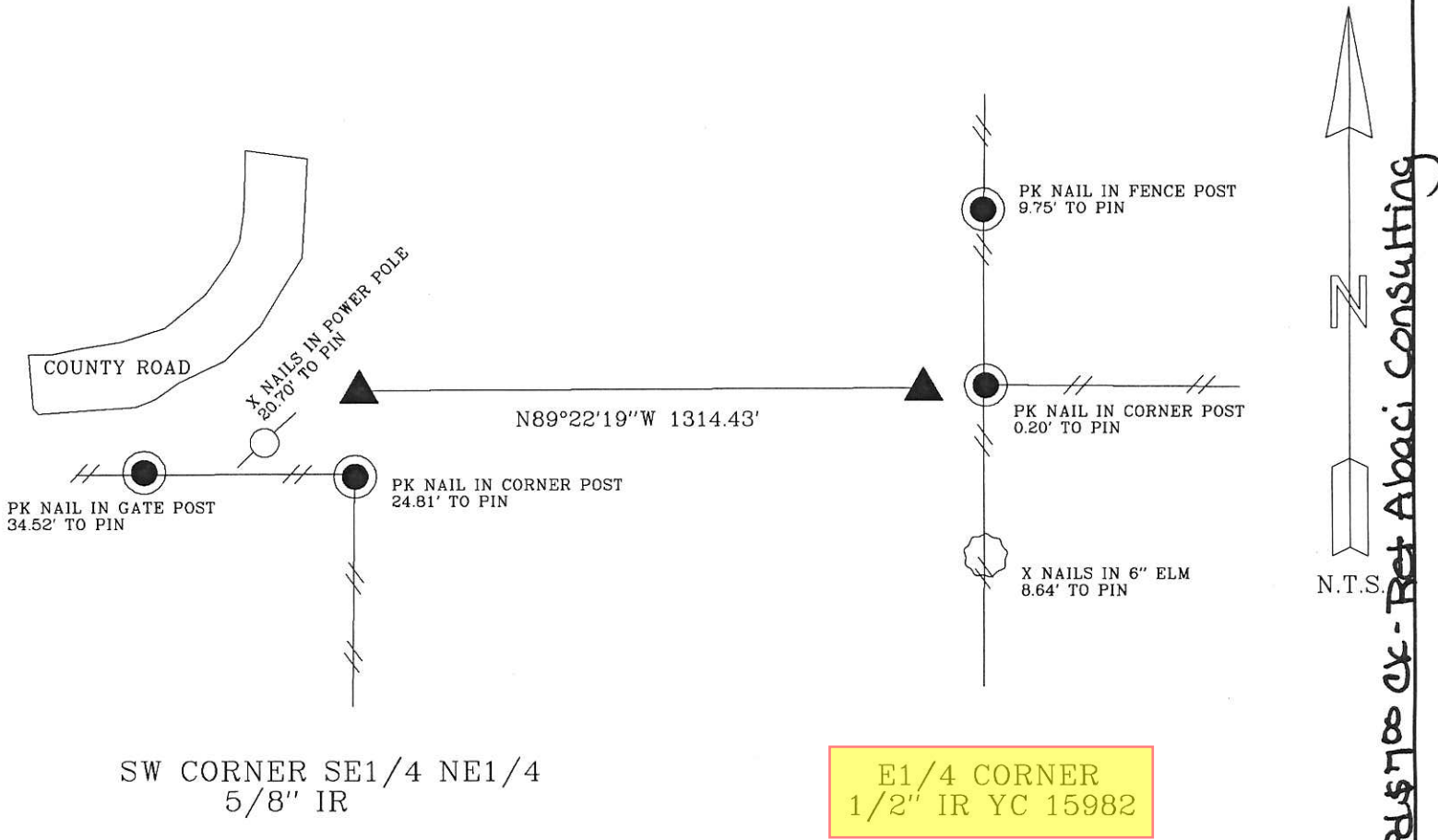
Monument Description & Remarks:

East 1/4 corner - Set 1/2" IR West of three way fence intersection running North, South and East
SW corner of the SE1/4 NE1/4- found 5/8" IR, no ties of record

PLAN VIEW



36-75-21



Pd \$700 CX - Ret Abaci Consulting

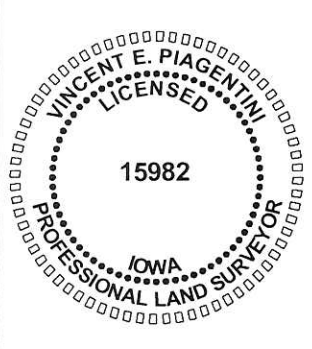
WASKER, 16379

I HEREBY CERTIFY THAT THIS SURVEYING DOCUMENT WAS PREPARED AND THE RELATED WORK WAS PERFORMED BY ME OR UNDER MY DIRECT PERSONAL SUPERVISION, AND THAT I AM A DULY LICENSED PROFESSIONAL LAND SURVEYOR UNDER THE LAWS OF THE STATE OF IOWA.

Vincent E. Piagentini 7/13/16
VINCENT E. PIAGENTINI, IOWA LIC. NO 15982 DATE

MY LICENSE RENEWAL DATE IS DECEMBER 31, 2016.

ADDITIONAL PAGES CERTIFIED (NONE UNLESS INDICATED HERE) This sheet only.



Corners to be Indexed:			
Corner	Section	Twp	Range
E1/4 CORNER	36	T75N	R21W
W1/4 CORNER	31	T75N	R20W
SW CORNER	36	T75N	R21W
SE1/4 NE1/4			