

Prepared by Abie C. Davis, P.E. & L.S., 1428 Oregon St., Knoxville, IA 50138 (641) 842-5863

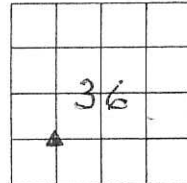
UNITED STATES PUBLIC LAND SURVEY CORNER CERTIFICATE OF

Land survey Monuments situated in Section 36, Township 75N, Range 21W, of the Fifth Principal Meridian, Marion County, Iowa.

Previously recorded in N/A in County Records Office.

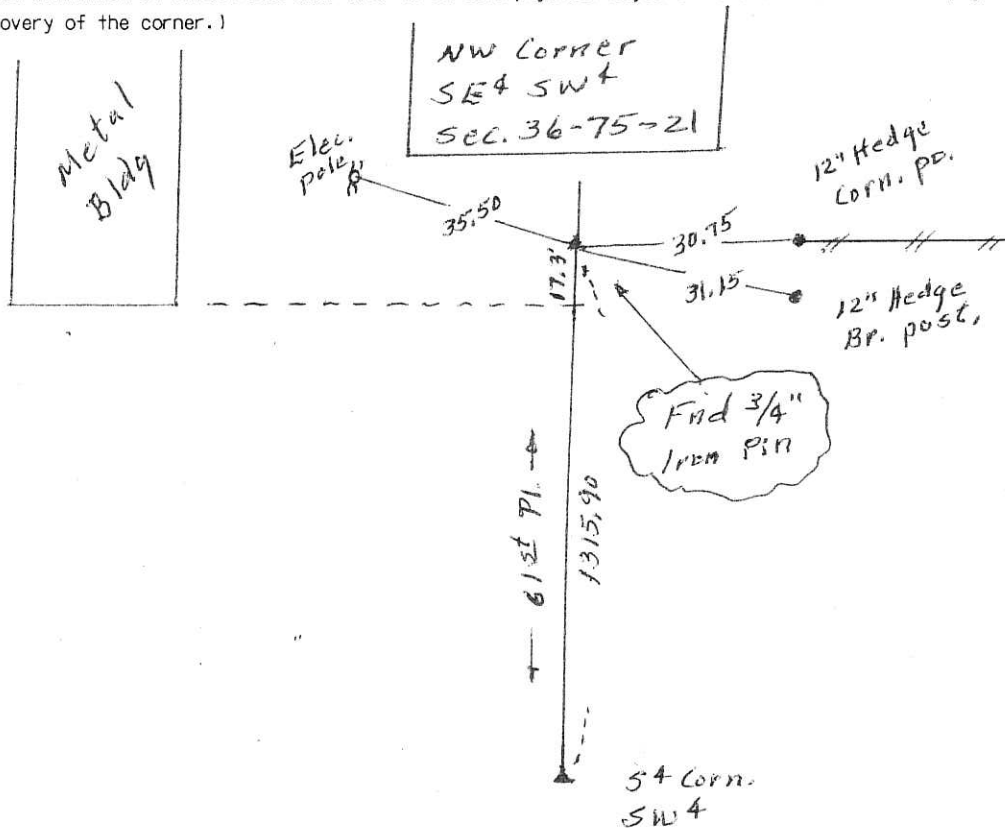
Show reason for preparing this certificate, the evidence and detailed procedures used in establishing the corner positions and monumentation found or placed

Monument Description and Remarks: Found 3/4" Iron Pin
5" deep on E road and in line with
fence line east.



PLAN - VIEW

(Show a minimum of three reference ties to durable physical objects, relevant monuments and physical conditions that will enable recovery of the corner.)



I hereby certify that the survey work was completed and this land surveying document was prepared by me or under my direct personal supervision and that I am a duly licensed land surveyor under the laws of the state of Iowa

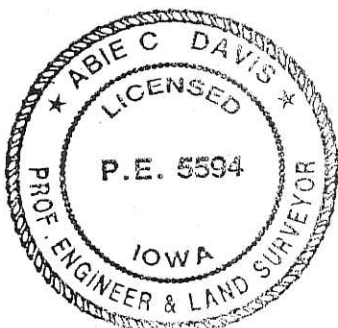
Signature: Abie C. Davis

Abie C. Davis, P.E. & L.S.

Date: Sept. 16, 2015 Reg. No. 5594

My license renewal date is December 31, 2015

SEAL



List Corners to be Indexed

Corners	Section	Twp	Range
NW Corn. SE4SW4	36	75N	21W