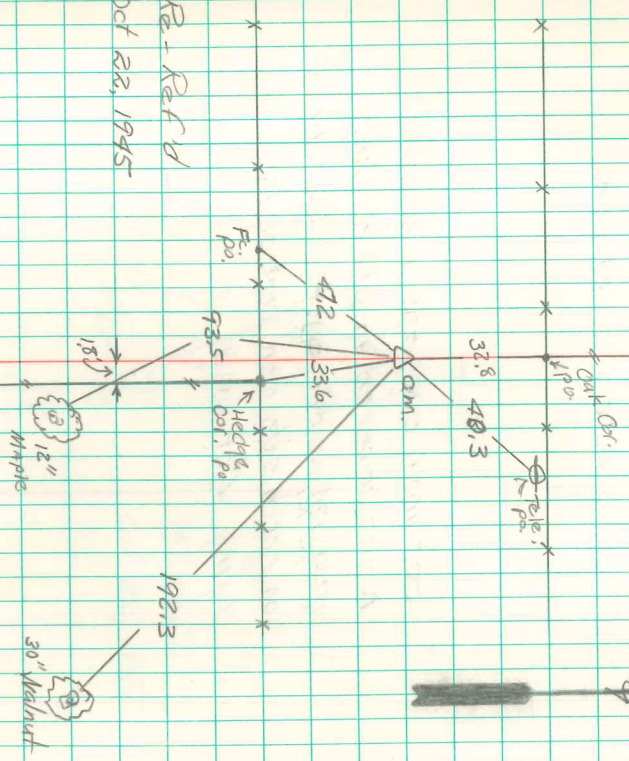
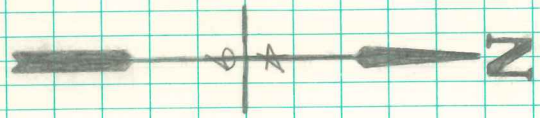


N 1/4 Cor., 9-75-21
Set: 5-13-41
Parthy, Kennedy, Luther,
Sabarry,

Notes: Kennedy



Ra-Ra Rd
Oct 22, 1945

Found white sandstone broken
in pieces over 2-2 1/2" round
tile. The top tile was broken.
(Watkins tile)
Right where we set mon.

Set mon over the hole 2 1/2"
round tile buried in place.
Top Mon. 14" under surface.
broken tile on north side
mon. at base.