



GARDEN & ASSOC.

P.O. Box 451, Oskaloosa, Iowa 52577-0451 Phone: (641)672-2526

KAREN SCHWANEBECK, RECORDER
MARION COUNTY IOWA

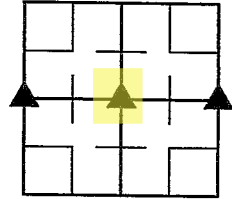
UNITED STATES PUBLIC LAND SURVEY CORNER CERTIFICATE

OF

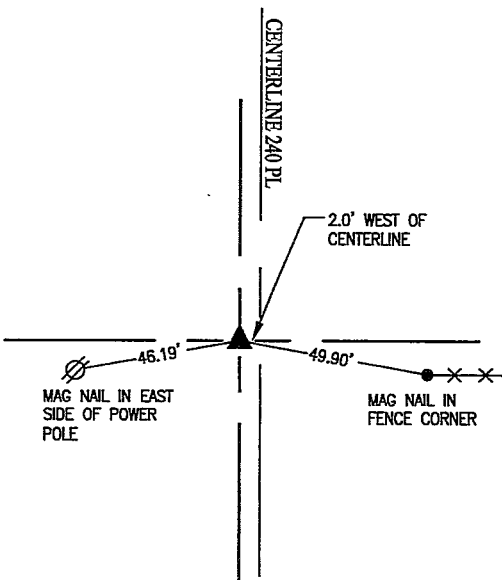
Land Survey Monuments situated in Section 12, Township 76, Range 18, of the Fifth Principal Meridian, MARION County, Iowa. Previously recorded in SEE BELOW in County Recorder's Office.

Monument Description and Remarks:

CENTER OF SECTION 12 WAS PREVIOUSLY RECORDED IN BOOK 2012 PAGE 2770.



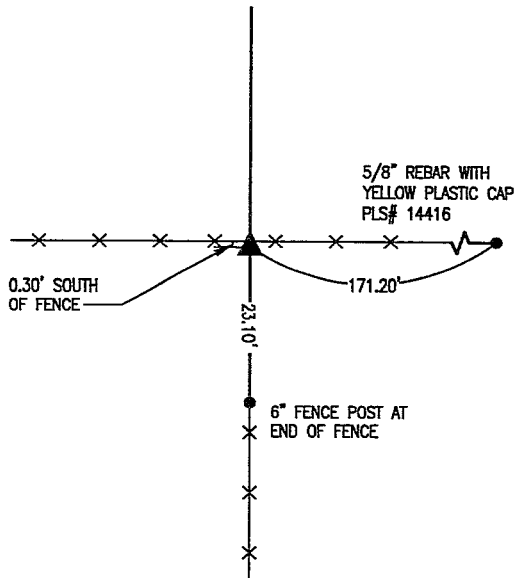
W 1/4 COR



DECEMBER 10, 2021
FOUND CONCRETE NAIL IN PAVING

COUNTY RECORDS INDICATE CONCRETE NAIL WAS SET ABOVE WPA CONCRETE MONUMENT BY MARION COUNTY ENGINEER DURING ROAD PAVING PROJECT.

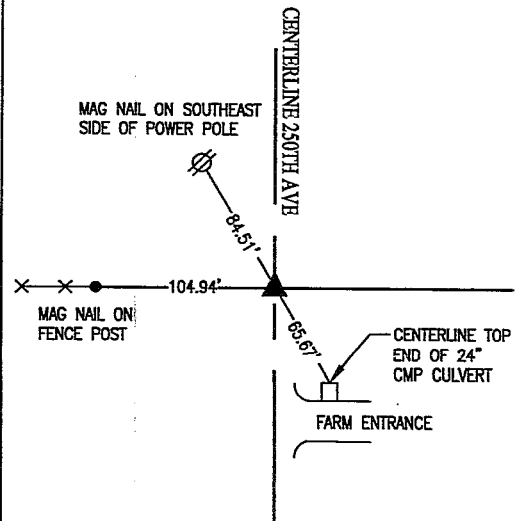
CENTER



DECEMBER 10, 2021
FOUND 5/8" X 30" REBAR WITH YELLOW PLASTIC CAP PLS# 14416.

APRIL 28, 2012
SEARCHED THOROUGHLY AROUND OLD FENCE CORNER FOR POSSIBLE STONE BUT NOTHING. SET 5/8" X 30" REBAR ON NORTH SIDE OF BASE OF OLD CORNER POST.

E 1/4 COR



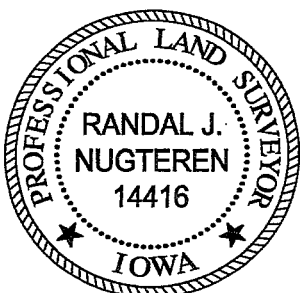
DECEMBER 10, 2021
SET MAG NAIL IN CENTERLINE JOINT AT LOCATION SHOWN ON SURVEY IN BOOK 2012 PAGE 3330.

I hereby certify that this land surveying document was prepared and the related survey work was performed by me or under my direct personal supervision and that I am a duly licensed Professional Land Surveyor under the laws of the State of Iowa.

Randal J. Nugteren January 21, 2022
Randal J. Nugteren, P.L.S. Date

License number: 14416
My license renewal date is December 31, 2022

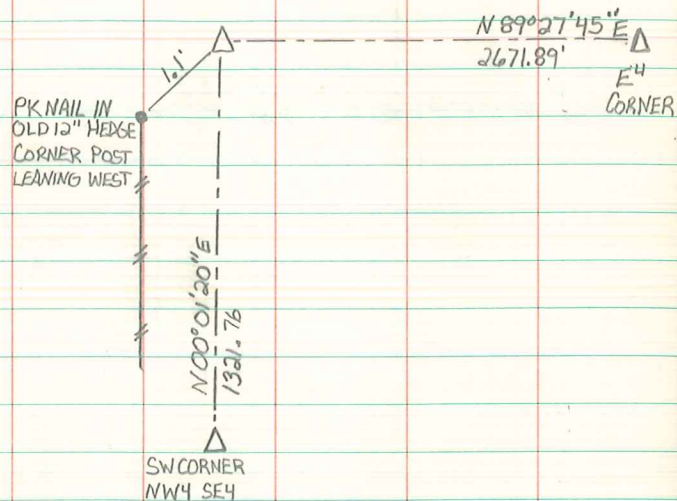
SEAL



List Corners to be Indexed			
Corners	Section	Township	Range
W 1/4 COR	12	76	18
CENTER	12	76	18
E 1/4 CPR	12	76	18

P.L.S. - Randal J. Nugteren & Assoc. Inc.

CENTER SECTION 12-76-18



SEARCHED THOROUGHLY AROUND OLD FENCE CORNER
FOR POSSIBLE STONE BUT FOUND NOTHING. SET
5/8" x 30" ON NORTH SIDE OF BASE OF OLD CORNER
POST.

5/24/12
RANDAL NUGTEREN