



Document 21-7022

Book 2021 Page 7022 Type CORNR Pages 1  
Date 11/04/2021 Time 12:21 PM  
Rec Amt \$7.00



GARDEN & ASSOC.

P.O. Box 451, Oskaloosa, Iowa 52577-0451 Phone: (641)672-2526

KAREN SCHWANEBECK, RECORDER  
MARION COUNTY IOWA

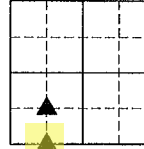
UNITED STATES PUBLIC LAND SURVEY CORNER CERTIFICATE

OF

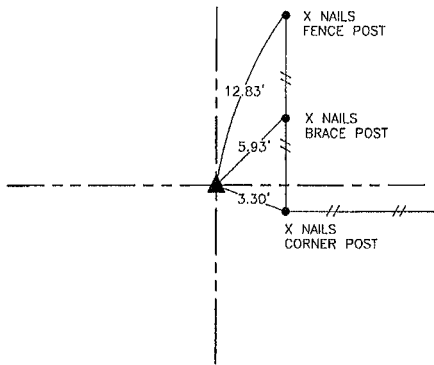
Land Survey Monuments situated in Section 35, Township 77, Range 18, of the Fifth Principal Meridian, MARION County, Iowa.

Previously recorded in NO CERTIFICATE OF RECORD in County Recorder's Office.

Monument Description and Remarks: SEE BELOW

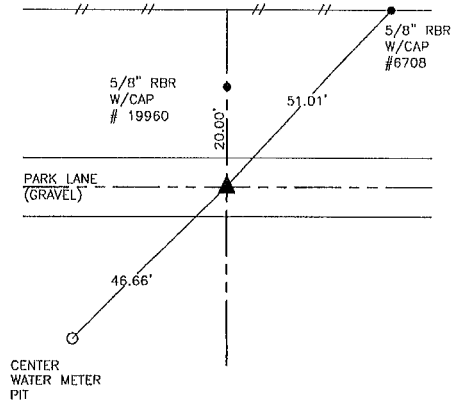


NW COR SE-SW



FEBRUARY 18, 2021  
SET 5/8" REBAR WITH YELLOW PLASTIC CAP PLS # 19960 AT THE INTERSECTION OF LINE CONNECTING OPPOSING 1/4-1/4 CORNERS.

SW COR SE-SW



FEBRUARY 18, 2021  
SET 5/8" REBAR WITH YELLOW PLASTIC CAP PLS # 19960 MIDWAY BETWEEN THE SOUTHWEST CORNER AND SOUTH 1/4 CORNER OF SEC. 35-77-18.

I hereby certify that this land surveying document was prepared and the related survey work was performed by me or under my direct personal supervision and that I am a duly licensed Professional Land Surveyor under the laws of the State of Iowa.

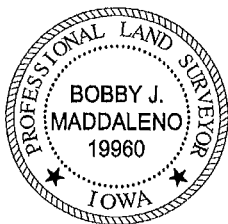
*Bobby J. Maddaleno* 11-1-21

Bobby J. Maddaleno, P.L.S. Date

License number: 19960

My license renewal date is December 31, 2021

SEAL



List Corners to be Indexed			
Corners	Section	Township	Range
NW COR SE-SW	35	77	18
SW COR SE-SW	35	77	18

Dd #79 Ahk. Ret - Garden & Associates, env.