

UNITED STATES PUBLIC LAND SURVEY CORNER CERTIFICATE OF

Land Survey Monuments situated in Section 32, Township 76N, Range 18W, of the Fifth Principal Meridian, Marion County, Iowa. Previously recorded in _____ in County Recorders Office. (book, page, document number, etc.)

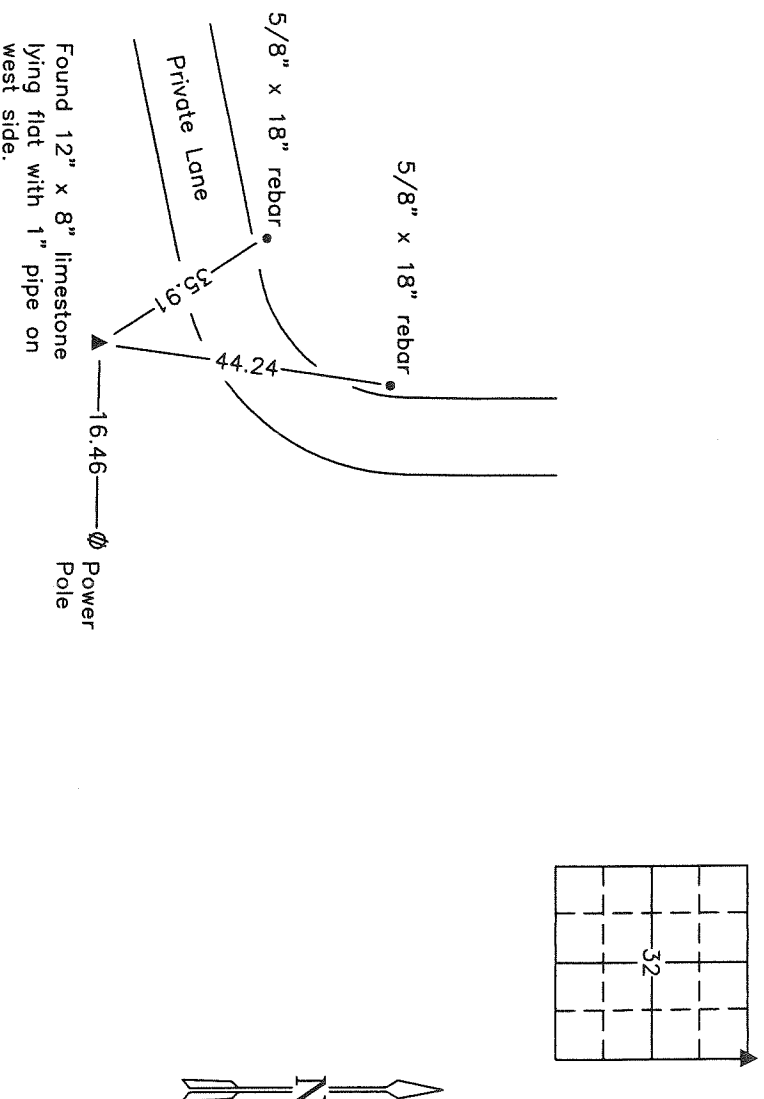
(Show reason for preparing this certificate, the evidence and detailed procedures used in establishing the corner positions and monumentation found or placed.)

Monument Description and Remarks: Found 12" x 8" stone lying flat with 1" pipe on west side. Limestone referenced in County Engineer's Office section corner tie Bk. 2, P. 23 for Twp. 76-18.

This Certificate is being prepared due to a Plat of Survey in the E 1/2 of Sec. 32, recorded in Bk. 2014, P. 144.

PLAN VIEW

(Show a minimum of three reference ties to durable physical objects, relevant monuments and physical conditions that will enable recovery of the corner.)



NE Cor., SEC. 32

NOTE: ALL TIES TO BRASS DISK UNLESS NOTED.

I hereby certify that this land surveying document was prepared and the related survey work was performed by me or under my direct personal supervision and that I am a duly Licensed Land Surveyor under the laws of the state of Iowa.

Signature: _____

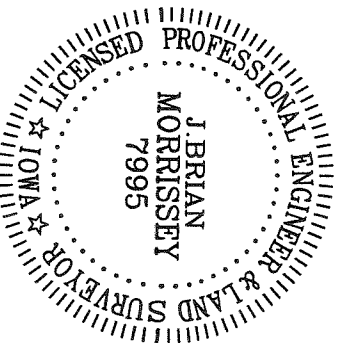
J. Brian Morrissey

Date: 2/10/14

License number 7995.

My license renewal date is December 31, 2015

733-13-4



Found 12"x8"x6" Limestone over
 2-2" round Tile in vertical Position
 as set by Co. Surveyor, N.T. Watkins
 Lowered 1-2" Tile in Place,
 set C.M. over Tile
 C.M. 18" below Surface & Placed
 Stone over C.M.

N.E. Co. 32-76-1B
 Set Jan 23-41
 Notes: Barker
 Party = Wells, Burrus, Heath & Crozier

