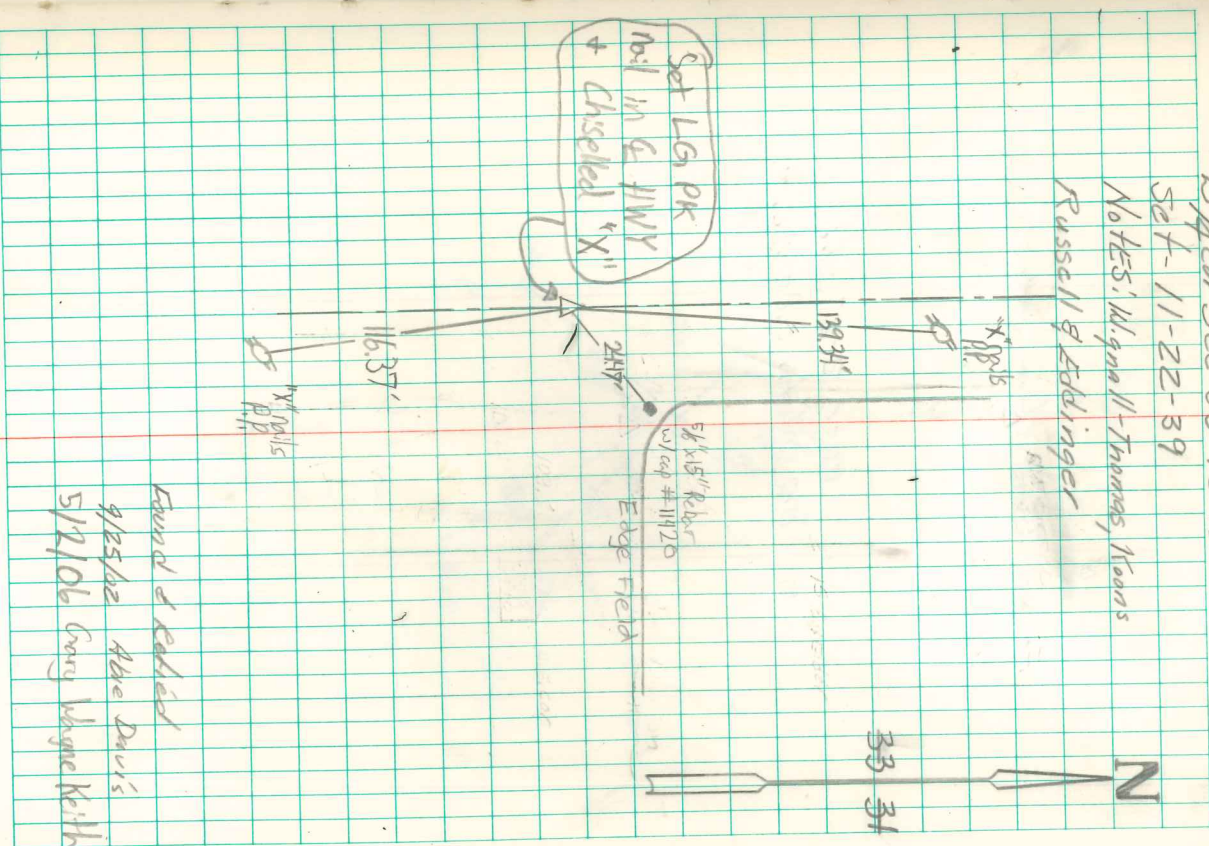


E 1/4 Cor sec 33-76-18

Set- 11-22-39

Notes: M. gno II - Thomas, Neoms

Russell & Eddinger



Found & re-set  
 9/25/82 Abe Davis  
 5/2/06 Gary Wayne Keith

Found Car Spring 30"x3" 1-Brick Bat,  
 Grey Sandstone 23"x10"x3" Cement  
 Block 12"x9"x5".  
 Lowered 2 stones + Brick in Place  
 in original location. Set cm  
 over same.  
 Car Spring on South side cm,  
 Rock on North side cm.