

Prepared By: **Johnstone & Associates**, 116 West 4th Street South, P.O. Box 903, Newton, Iowa 50208 – Phone: (641) 787-9600

## United States Public Land Survey Corner Certificate

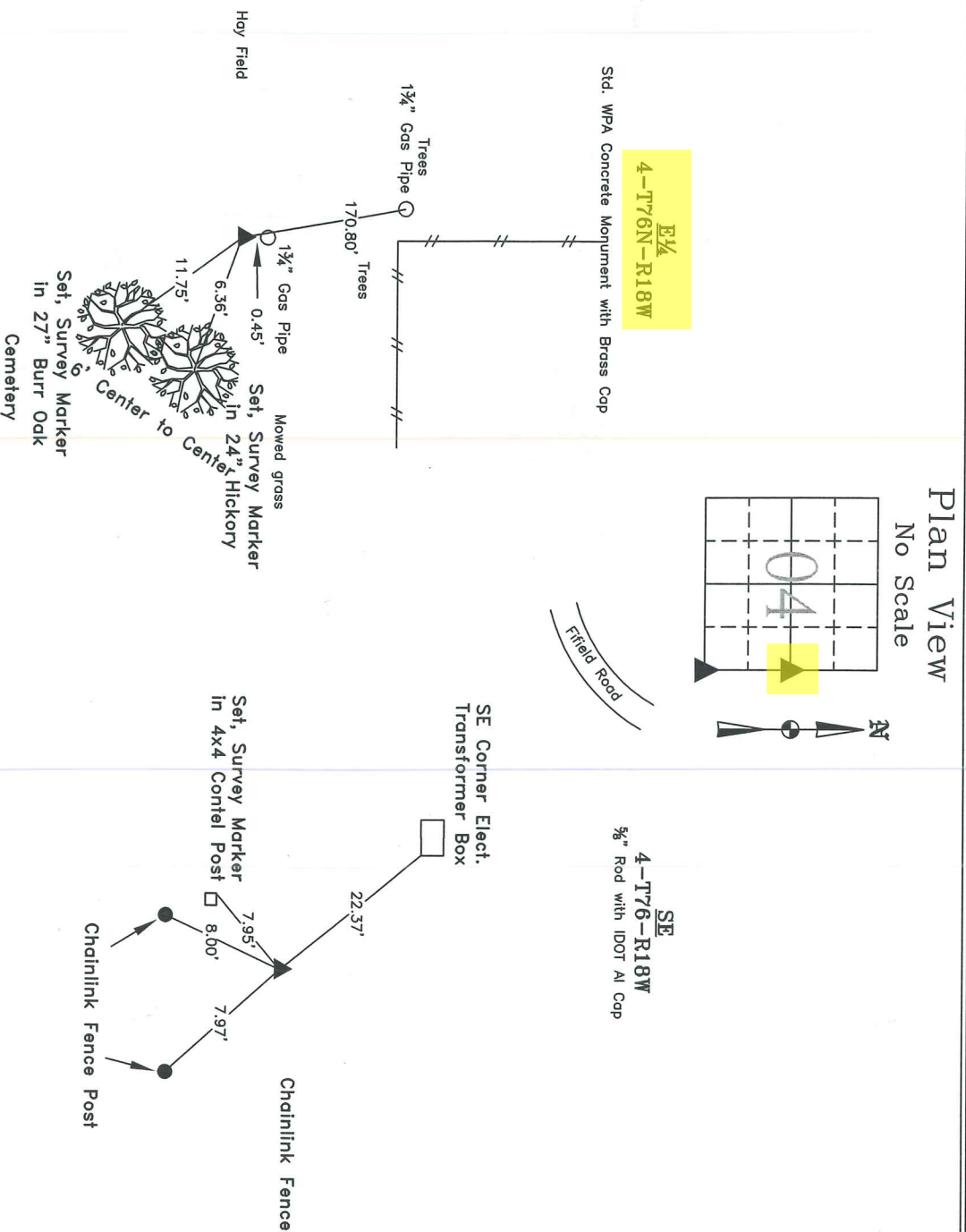
of  
 Land Survey Monuments situated in Section 4, Township 26 North, Range 18 West, of the 5th Principal Meridian,  
 Marion County, Iowa. E 1/4 Corner previously recorded in Book 1, Page 36, SE Corner previously recorded in Book  
 1, Page 85

### Monument Description and Remarks:

East 1/4 Corner – Corner previously recorded as Conc. Mon. Corner Recovery – found 3 listed ties, swung arcs and swept intersection area with metal detector. Found Standard WPA Concrete Monument with Brass Cap 1" deep with 1 1/4" pipe on North side. Corner accepted and took ties as shown below.

Southeast Corner – Corner previously recorded as 5/8" Rod with IDOT Al Kap RLS No. 6923. Corner Recovery – all ties were missing. Swept general area with metal detector, found 5/8" rod with IDOT Al Cap. Corner accepted and took ties as shown below.

This Corner Certificate is being prepared because the recorded ties have changed and the Monuments were recovered for a Survey in the SE 1/4 of the SE 1/4.



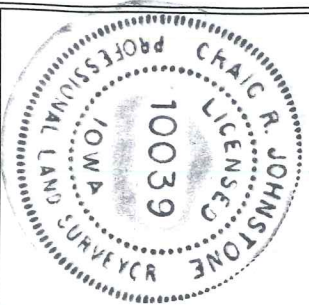
I hereby certify that this land surveying document was prepared and the related survey work was performed by me or under my direct personal supervision and that I am a duly Licensed Professional Land Surveyor under the laws of the State of Iowa.

*Craig R. Johnstone*

10 Oct 2013

Craig R. Johnstone, P.L.S.  
 Iowa License No. 10039  
 My License Renewal Date Is: 31 December 2014

*This Certification  
 Covers this Sheet Only.*



**Johnstone & Associates**  
 Civil Engineering  
 Land Surveying

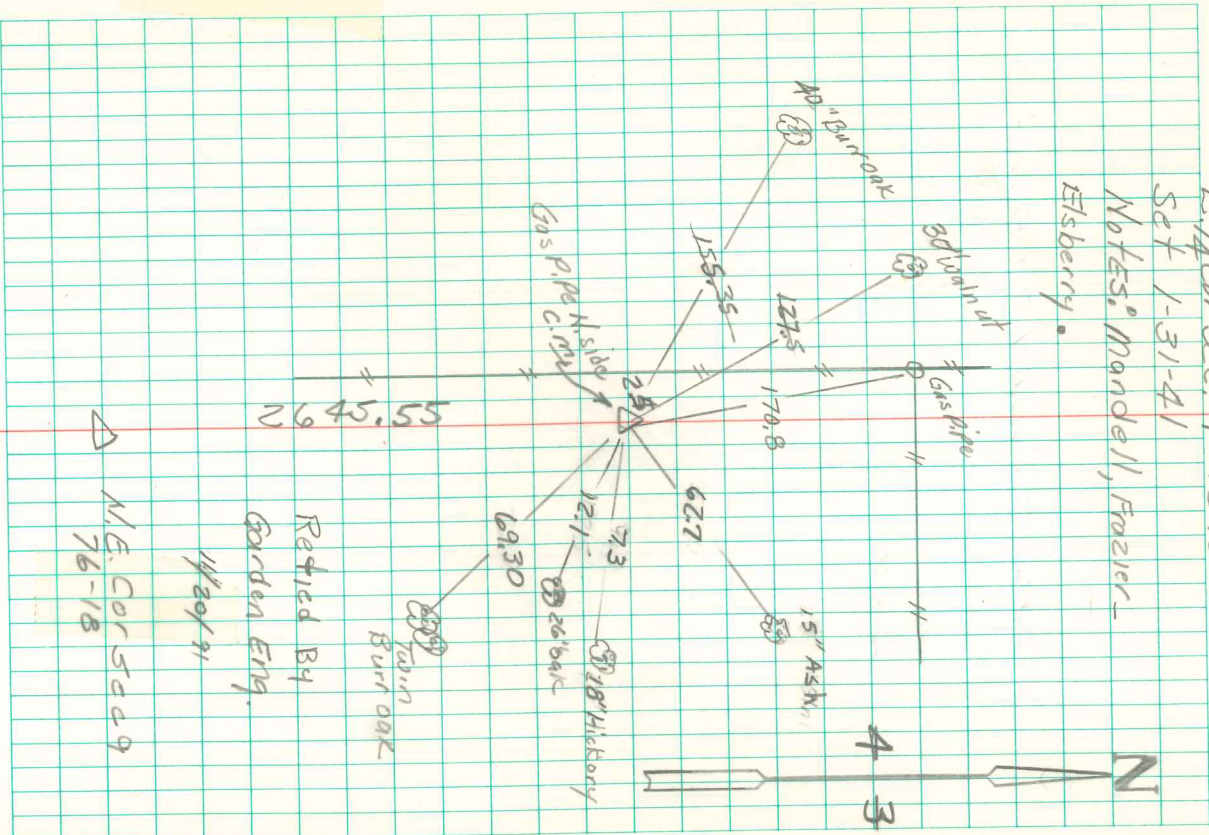
116 West 4th Street South  
 P.O. Box 903  
 Newton, IA 50208  
 Phone: (641) 787-9600  
 Fax: (641) 787-9602  
 www.johnstoneandassociates.biz

PROJECT NO:	13-024
DATE:	10 Oct 13
DRAFTED BY:	CRJ
F.B. REF:	13/74
SHEET NO:	1

### List of Corners to be Indexed:

Corners	Section	Township	Range
E 1/4	4	76	18
W 1/4	3	76	18
SE	4	76	18
SW	3	76	18
NE	9	76	18
NW	10	76	18

E 1/4 Cor. sec. 4-76-18  
Set 1-31-41  
Notes: Mandell, Frazier,  
Eisberry.



Found 1-2" Round tile and Gas Pipe  
2" Round

Lowered Tile in Place & set G.M.  
on Top & Gas pipe on North side