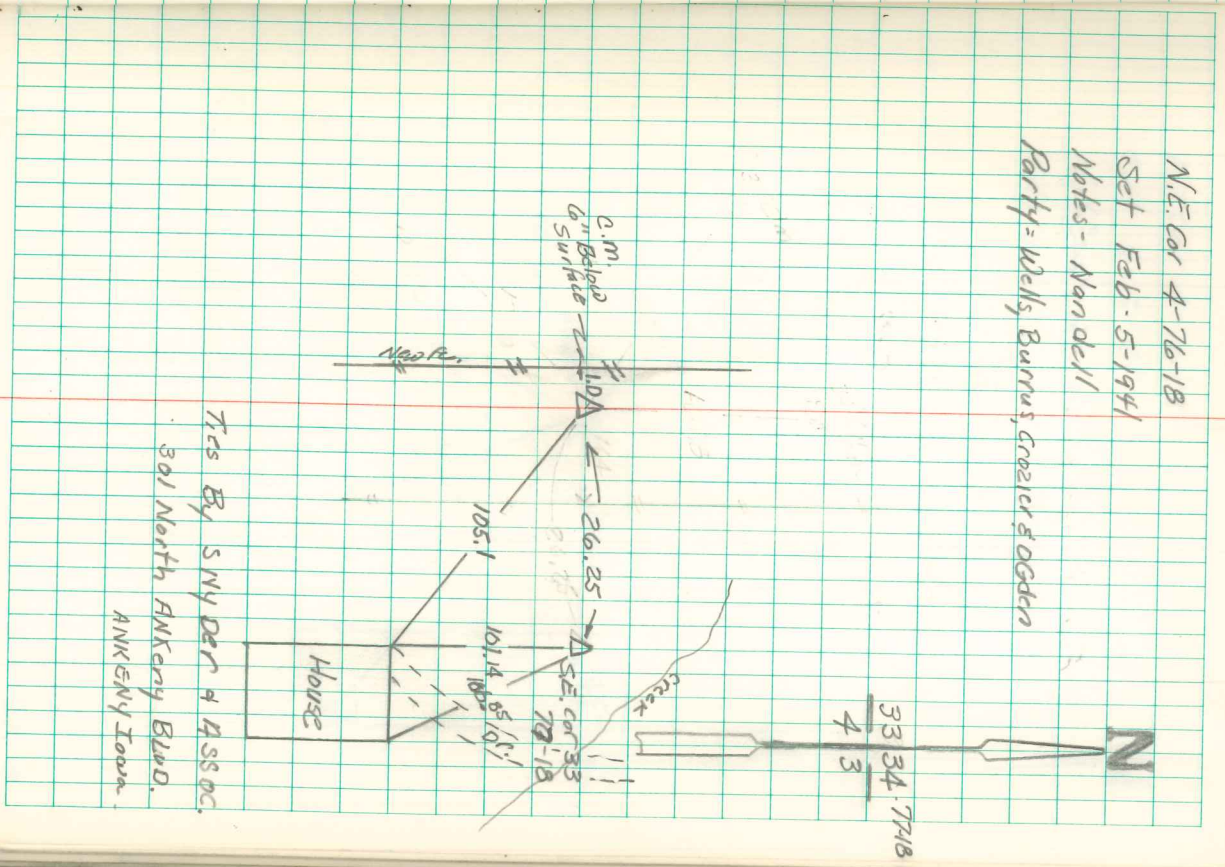


Found Granite Boulder 8'x6'x6'  
 & 2-2" Dike  
 Set cm. over 1-Dike & Stone  
 C.m. 6" Below Surface

N.E. Cor 4-76-18  
 Set Feb. 5-1941  
 Notes - Nanderl  
 Party = Wells, Burrus, Crozier & Ogden



Tics by SNYDER & ASSOC.  
 301 North ANKENY Blvd.  
 ANKENY Iowa