

Found sand stone 24"x14"x9"
over 1-25" Q tile.

Set C.M. with stone on
south side C.M.

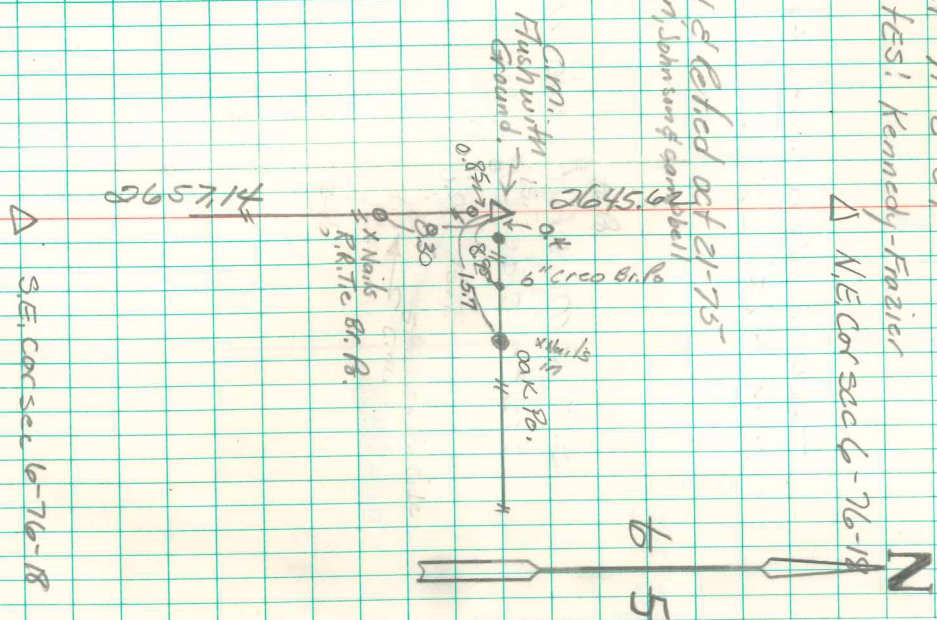
E 1/4 Cor sec 6-76-18

Set 11-2-39

No FES! Kennedy-Frazier

Δ N/E Cor sec 6-76-18

Found & checked out 21-75
Nugget, Johnson & Corbell



Δ S.E. Cor sec 6-76-18

Found & checked
10/6/1992