

KAREN SCHWANEBECK, RECORDER
 MARION COUNTY IOWA

Prepared By: J. Brian Morrissey, Morrissey Surveying & Consulting, LLC, 1405 Hwy. G28, Oley, Ia. 50214, 515-480-2531

UNITED STATES PUBLIC LAND SURVEY CORNER CERTIFICATE OF

Land Survey Monuments situated in Section 7, Township 76N, Range 18W, of the Fifth Principal Meridian, Marion County, Iowa. Previously recorded in n/a in County Recorders Office. (book, page, document number, etc.)

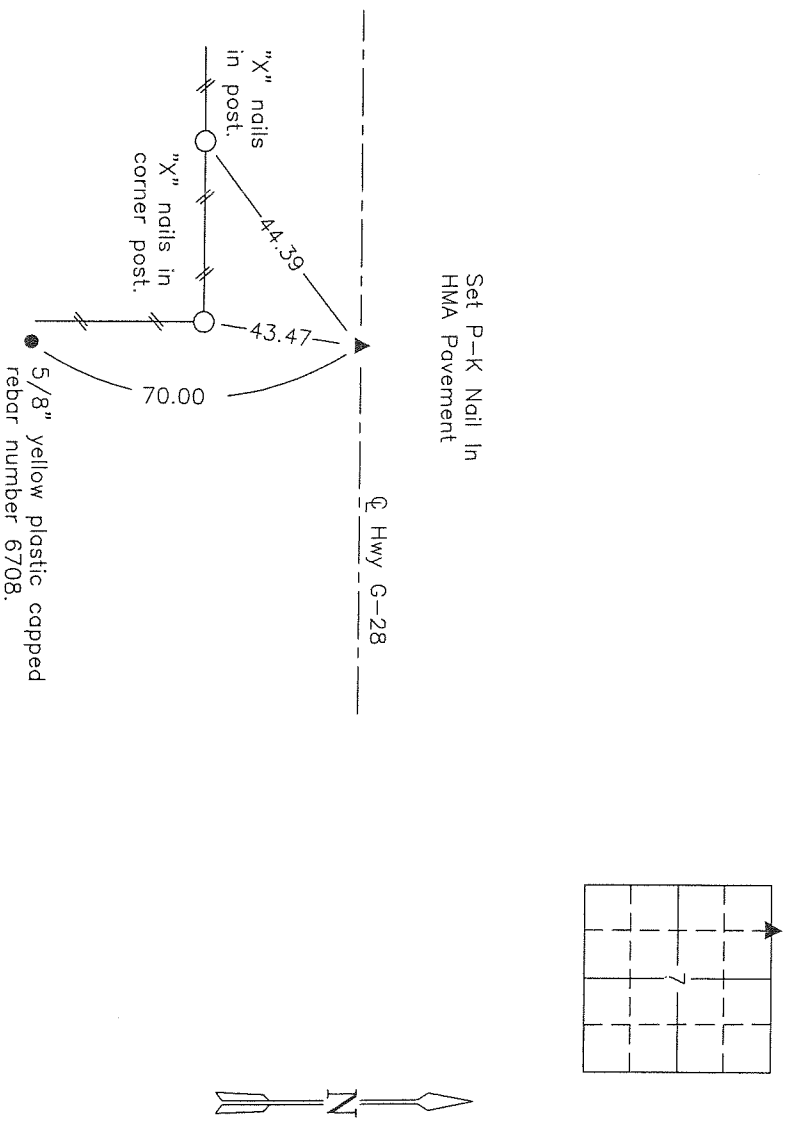
(Show reason for preparing this certificate, the evidence and detailed procedures used in establishing the corner positions and monumentation found or placed.)

Monument Description and Remarks: Set P-K nail in HMA pavement on line between the found N 1/4 Cor. and NW Cor. and at a distance as shown on the Find Plat for COTTONWOOD CREEK Subdivision in the NW 1/4 of Sec. 7.

This Corner was set For the H.M. KUIPER BRAAFHART SUBDIVISION in the NE 1/4 of the NW 1/4 of Sec. 7.

PLAN VIEW

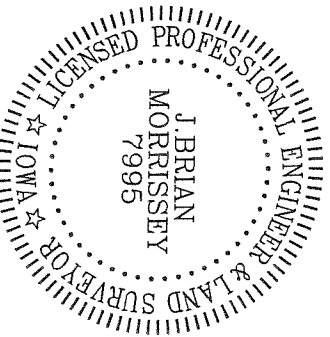
(Show a minimum of three reference ties to durable physical objects, relevant monuments and physical conditions that will enable recovery of the corner.)



NW Corner NE 1/4 NW 1/4 Section 7

NOTE: ALL TIES TO BRASS DISK UNLESS NOTED.

I hereby certify that this land surveying document was prepared and the related survey work was performed by me or under my direct personal supervision and that I am a duly Licensed Land Surveyor under the laws of the state of Iowa.

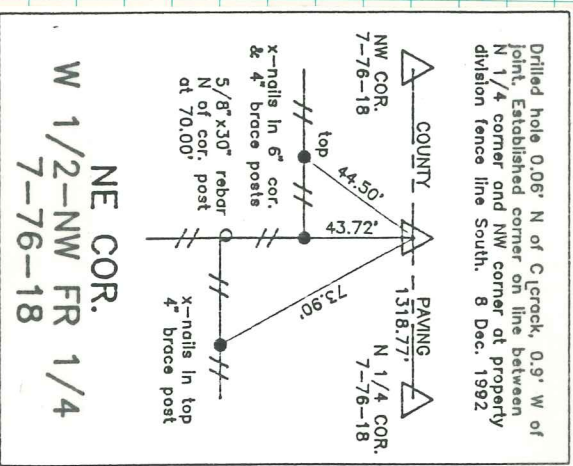


Signature: J. Brian Morrissey Date: 8/21/14
 License number 7995.
 My license renewal date is December 31, 2015

741-13-1

pd \$700 ck - Ret Morrissey Surveying

NE COR. W 1/2 - NW FR. 1/4 7-76-18



NE COR.
W 1/2-NW FR 1/4
7-76-18

RETRIED 8 DEC 1992
JERRY NUGTREN

