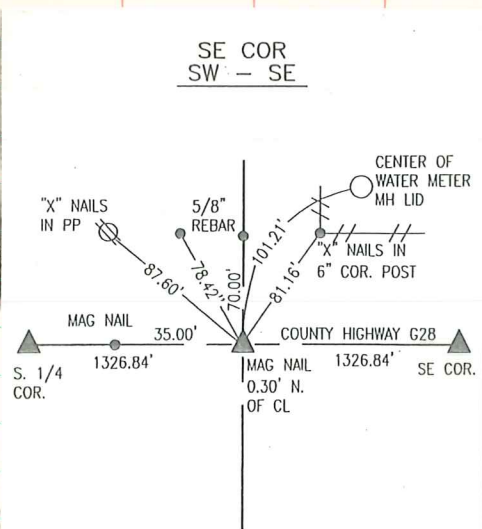


SE COR SW 1/4 SE 1/4 SEC 6-76-18



OCT. 1975 LS 6708
ESTABLISHED CORNER ON LINE AND
MIDWAY BETWEEN SE CORNER AND S.
1/4 CORNER OF SEC. 6.
CHISELLED "X" IN PAVING

1992 LS 11420
FOUND CHISELLED X IN PAVING
DURING SURVEY FOR DINGEMAN
ESTATES AND CONFIRMED DISTANCES
EAST AND WEST.

NOVEMBER 2011
COUNTY ROAD HAS BEEN
RESURFACED. SET MAG NAIL IN
ASPHALT ON LINE BETWEEN SE
CORNER AND S. 1/4 CORNER OF
SEC. 6