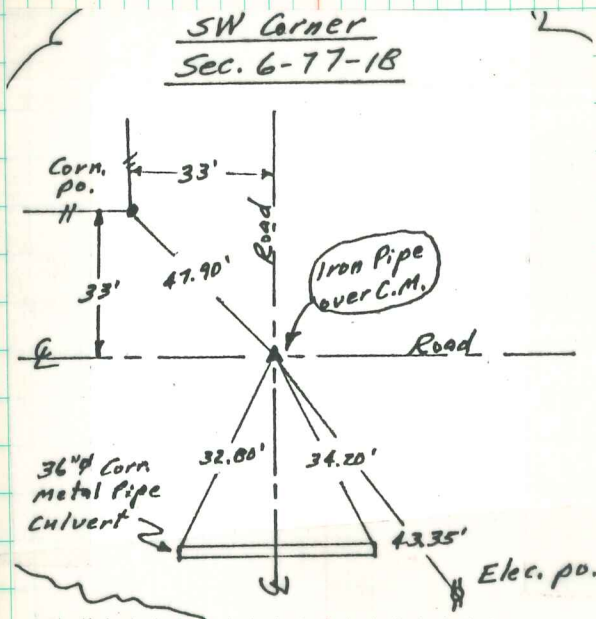


SW CORNER

SEC. 6-77-18



RETIED 5-13-94

ABIE DAVIS

Found sandstone 12" x 10" x 4"
over 2-3" round tile

set c.m. over 1 round tile
" Stone over c.m.

c.m. 16" Below Surface

N. E. Cor 12-77-19

Set-10-23-40

Notes-Kennedy

