

Found Sandstone 24"x8"x3" over
Cast Iron wagon Hub over 1" Bolt
15" Long

set c.m. over the wagon Hub
" Bolt on North side c.m.
" Stone on TOP c.m.

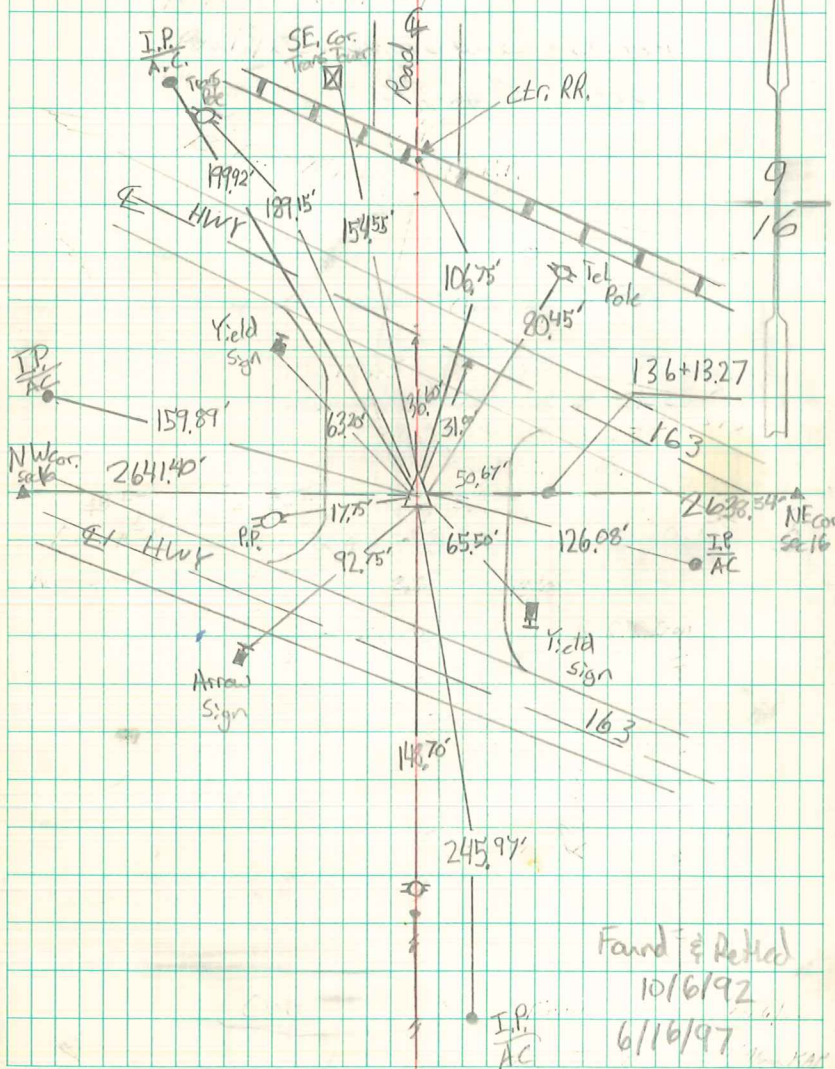
10/6/92 - Fd. C.M. 16" Deep set 5/8" Iron
Pin w/ Alum cap # 6923

6/16/97 - Fnd Cap # 6923 in punct.
0.55" W. of Traverse Joint

6/25/98 - Fd. CM 16" Deep cut "X" in
Paving set 1 1/4" Brass
Survey marker Disc

N 1/2 Cor 16-77-19
set- 10- - 40

Notes - Kennedy



Found & Re-Set
10/6/92
6/16/97
6/25/98