

KAREN SCHWANEBECK, RECORDER
MARION COUNTY IOWA

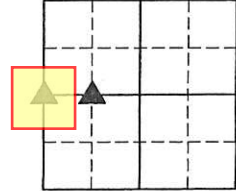


GARDEN & ASSOC.

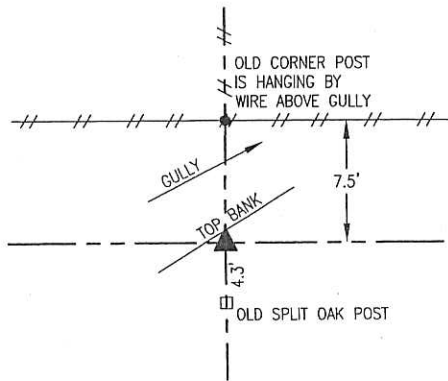
P.O. Box 451, Oskaloosa, Iowa 52577-0451 Phone: (641)672-2526

UNITED STATES PUBLIC LAND SURVEY CORNER CERTIFICATE
OF

Land Survey Monuments situated in Section 16, Township 77, Range 19, of the Fifth Principal Meridian, MARION County, Iowa. Previously recorded in NO CERTIFICATE OF RECORD in County Recorder's Office. Monument Description and Remarks: SEE BELOW



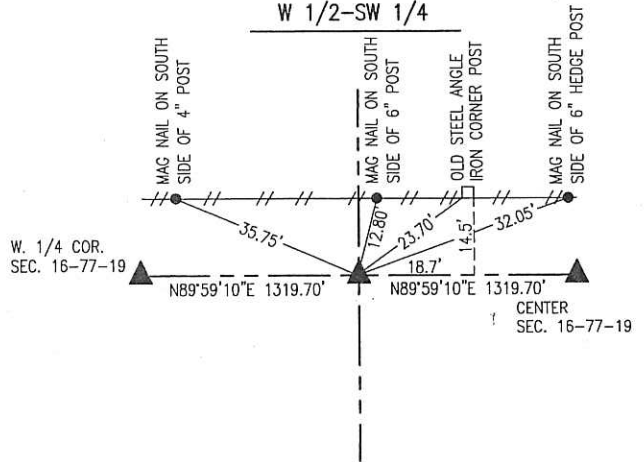
WEST 1/4 COR.



MAY 6, 2015
FOUND 4"x7"x12" SANDSTONE EXPOSED 3" ABOVE WPA
CONC. MON. USING 1941 WPA REFERENCE TIES.

SET 5/8" X 30" REBAR ON SOUTH SIDE OF CONC. MON.
SET 5/8" X 30" REBAR ON NORTH SIDE OF SANDSTONE
AND CONC. MON.

NE CORNER
W 1/2-SW 1/4



DECEMBER 17, 2015
SET 5/8" X 30" REBAR ON LINE & MIDWAY BETWEEN
W. 1/4 CORNER AND CENTER OF SECTION 16.

I hereby certify that this land surveying document was prepared and the related survey work was performed by me or under my direct personal supervision and that I am a duly licensed Professional Land Surveyor under the laws of the State of Iowa.

Randal J. Nugteren January 22, 2016
Randal J. Nugteren, P.L.S. Date

License number: 14416

My license renewal date is December 31, 2016

SEAL



List Corners to be Indexed			
Corners	Section	Township	Range
W. 1/4 COR.	16	77	19
NE COR W. 1/2-SW 1/4	16	77	19

Pds 7004 Ret Garden & Assoc cnv

Found Granit Rock 12" x 8" x 8"

Set C.M. over Granit Rock

" Small Rock top C.M.

C.M. 12" under Surface

Ed Car. 17-77-19

Set - 4-16-41

Notes - Kennedy

Party = Luther, Salberry

