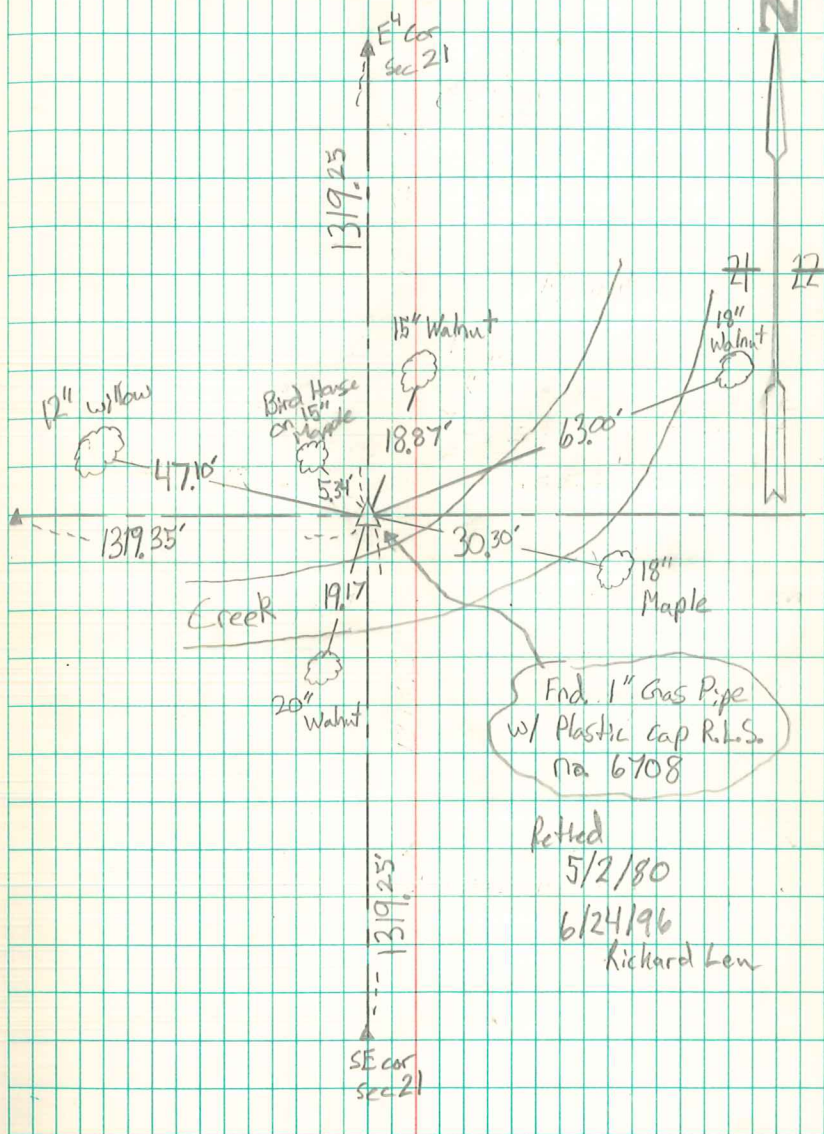


5/2/80 - Set 1" Pipe on Creek Bank,  
 Established on Line  $\frac{1}{2}$  midway  
 between E<sup>1</sup> cor. sec 21 &  
 SE cor sec. 21.

E<sup>1</sup>/<sub>4</sub> cor of the S. E.  $\frac{1}{4}$  of Sec 21-77-19



Fnd. 1" Gas Pipe  
 w/ Plastic Cap R.L.S.  
 na 6708

Retted  
 5/2/80  
 6/24/96  
 Rickard Lew