

KAREN SCHWANEBECK, RECORDER
MARION COUNTY IOWA

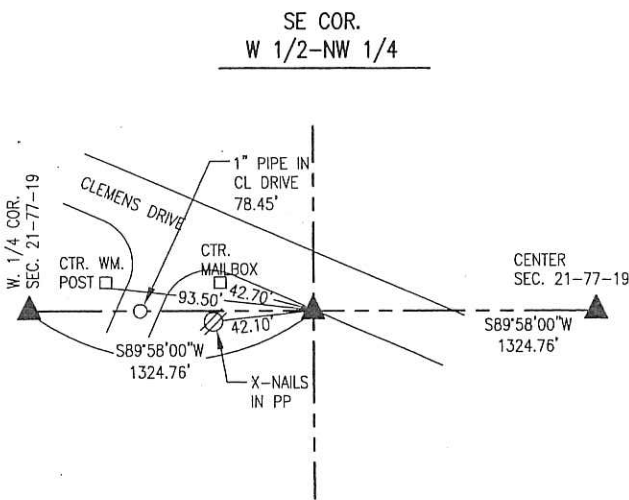
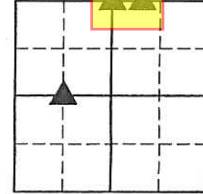


GARDEN & ASSOC. P.O. Box 451, Oskaloosa, Iowa 52577-0451 Phone: (641)672-2526

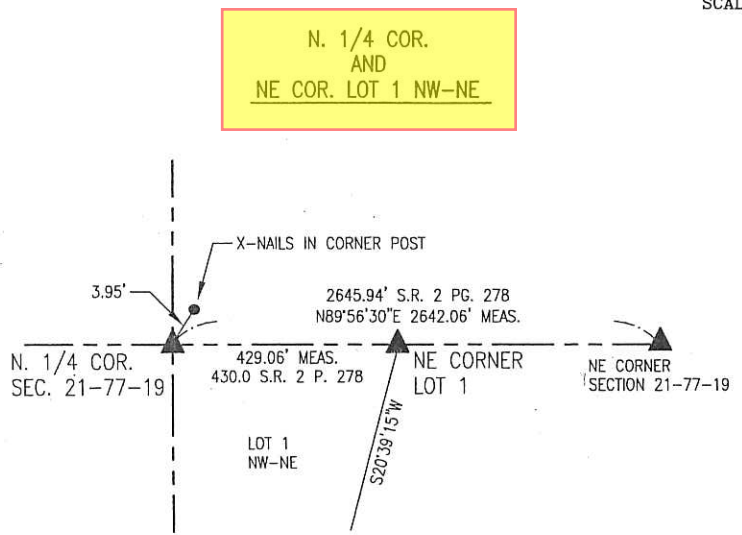
UNITED STATES PUBLIC LAND SURVEY CORNER CERTIFICATE

OF

Land Survey Monuments situated in Section 21, Township 77, Range 19, of the Fifth Principal Meridian, MARION County, Iowa. Previously recorded in NO CERTIFICATE OF RECORD in County Recorder's Office. Monument Description and Remarks: SEE BELOW



MAY 22, 2015
SET 5/8" X 30" REBAR ON LINE AND MIDWAY BETWEEN W. 1/4 COR. AND CENTER OF SECTION 21.
CORNER LOCATION IS 2' NE OF ROAD SHOULDER



MAY 12, 2015 - N. 1/4 COR.
FOUND WPA CONCRETE MONUMENT 3" DEEP 4' SOUTH OF CORNER POST. FOUND 7"x12"x15" GRANITE LYING BESIDE CORNER POST. WPA REFERENCE TIES NOTE "GRANITE ROCK ON TOP OF CONCRETE MONUMENT."
SET GRANITE ON WEST SIDE OF CONCRETE MONUMENT.
SET 5/8" X 30" REBARS ON NORTH AND SOUTH SIDES OF CONCRETE MONUMENT.

MAY 12, 2015 - NE CORNER LOT 1
FOUND 7"x8"x18" SANDSTONE LEANING SLIGHTLY EAST, TOP AT SURFACE. STONE IS RECORDED IN SURVEYOR'S RECORD 2 PAGE 278.
LOWERED STONE TO 4" DEEP.
SET 5/8" X 30" REBARS ON NORTH AND SOUTH SIDES OF STONE.

I hereby certify that this land surveying document was prepared and the related survey work was performed by me or under my direct personal supervision and that I am a duly licensed Professional Land Surveyor under the laws of the State of Iowa.

Randal J. Nugteren January 22, 2016
Randal J. Nugteren, P.L.S. Date
License number: 14416
My license renewal date is December 31, 2016

SEAL



List Corners to be Indexed			
Corners	Section	Township	Range
N. 1/4 COR.	21	77	19
NE COR. LOT 1 NW 1/4-NE 1/4	21	77	19
SE CORNER W. 1/2-NW 1/4	21	77	19

PLS 400 OK - RET Geardent Assoc Env

Found 2 Brown sand stones
standing on END side by side
TOP stones 12" under Surface

Set C.M. over Both stones
" Granit Rock on TOP C.M.

N $\frac{1}{4}$ Cor 21-77-19
Set- 3-26-41
Notes- Kennedy
Party- Shore & adgen

