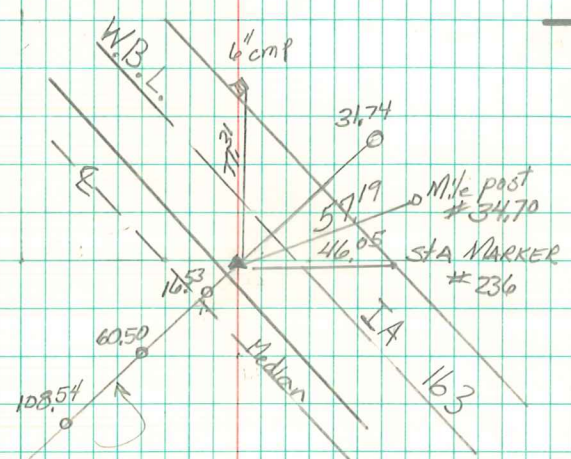


CENTER
SEC. 22-77-19



5/8" rebar points ARE set
w/ 2" um caps on line

Found I Pin
w/ D.O.T. Cap
0.2 S. of Cor. Po.

7/28/95 Abie Davis

Set 1 1/4" Brass Survey Marker in West
bound lane, Keith Vlademar LS# 978/
I.D.O.T. 3/16/05