

KAREN SCHWANEBECK, RECORDER
MARION COUNTY IOWA

Prepared By: J. Brian Morrissey, Morrissey Surveying & Consulting, LLC, 1405 Hwy. 628, Oley, Ia. 50214, 515-480-2531

UNITED STATES PUBLIC LAND SURVEY CORNER CERTIFICATE OF

Land Survey Monuments situated in Section 23, Township 77N, Range 19W, of the Fifth Principal Meridian, Marion County, Iowa. Previously recorded in Bk. 1, P. 293 in County Recorder's Office. (book, page, document number, etc.)

(Show reason for preparing this certificate, the evidence and detailed procedures used in establishing the corner positions and monumentation found or placed.)

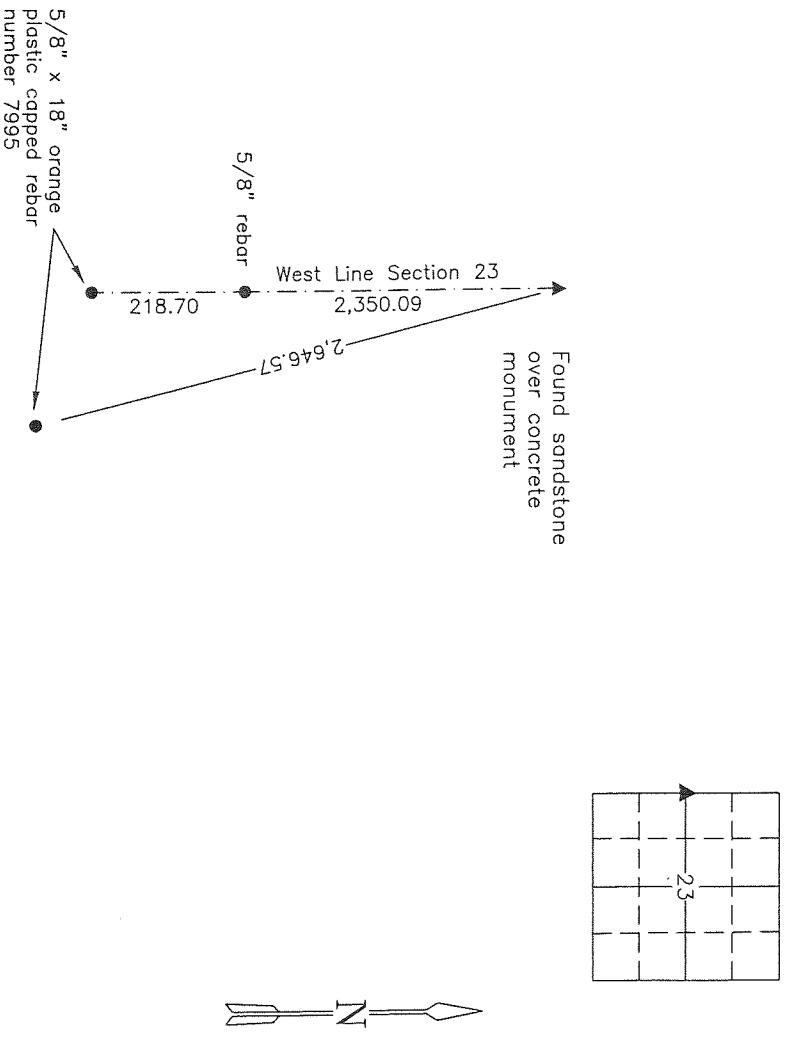
Monument Description and Remarks: Found sandstone over concrete monument as referenced by a Plat of Survey in Bk. 250, P. 30, and ties from the Marion County Engineer's Office.

Monument is in a cultivated field with no physical objects within a reasonable distance for ties. See Plat of Survey in Bk. 2014, P. 1815 for further reference.

This corner was used for a Plat of Survey in the SW 1/4 of the SW 1/4 of Section 23.

PLAN VIEW

(Show a minimum of three reference ties to durable physical objects, relevant monuments and physical conditions that will enable recovery of the corner.)

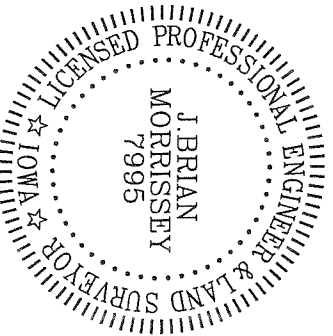


NW Corner SW 1/4 Section 23

NOTE: ALL TIES TO BRASS DISK UNLESS NOTED.

I hereby certify that this land surveying document was prepared and the related survey work was performed by me or under my direct personal supervision and that I am a duly Licensed Land Surveyor under the laws of the state of Iowa.

Signature: J. Brian Morrissey Date: 8/22/14
License Number 7995.
My license renewal date is December 31, 2015



Found sandstone 17"x11"x6"

Set C.M. & Placed stone Top C.M.
sticking above surface

C.M. 14" under surface

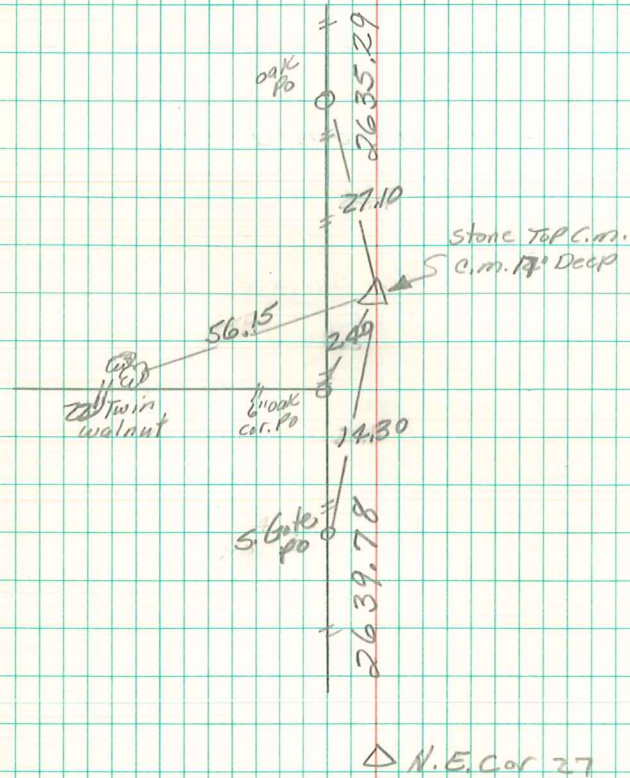
E $\frac{1}{2}$ Cor 22-77-19

Set - 10-24-40

Notes - Kennedy

Party = Shore & Mitchell

△ N.E. Cor
SEC 22-77-19



22 23

△ N.E. Cor 27