

Found 2-2½" round tile

set C.M. over 2½" round tile

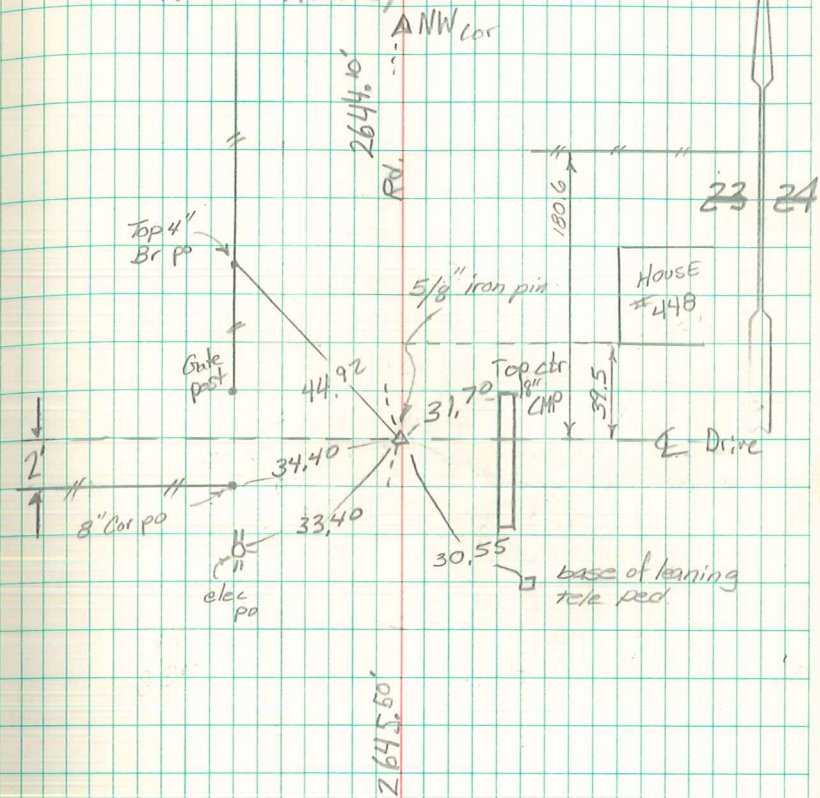
5/12/06 - Dug 5'x5'x30" Deep hole in  
area indicated by available ties.  
Did not find C.M.

Set ¼" x 1½" x 24" Iron bar &  
5/8" Iron pin w/ cap at distance  
indicated on Ties from SE cor  
& on line between SW & NW cor.

E½-Cor 23-77-19

Set - 11-7-39

Notes - Kennedy



5/12/06 Abie Davis