

KAREN SCHWANBECK, RECORDER
 MARION COUNTY IOWA

Prepared By: J. Brian Morrissey, Morrissey Surveying & Consulting, LLC, 1405 Hwy. 628, Otley, Ia. 50214, 515-480-2531

UNITED STATES PUBLIC LAND SURVEY CORNER CERTIFICATE OF

Land Survey Monuments situated in Section 23, Township 77N, Range 19W, of the Fifth Principal Meridian, Marion County, Iowa. Previously recorded in Bk. 1, P. 293 in County Recorder's Office. (book, page, document number, etc.)

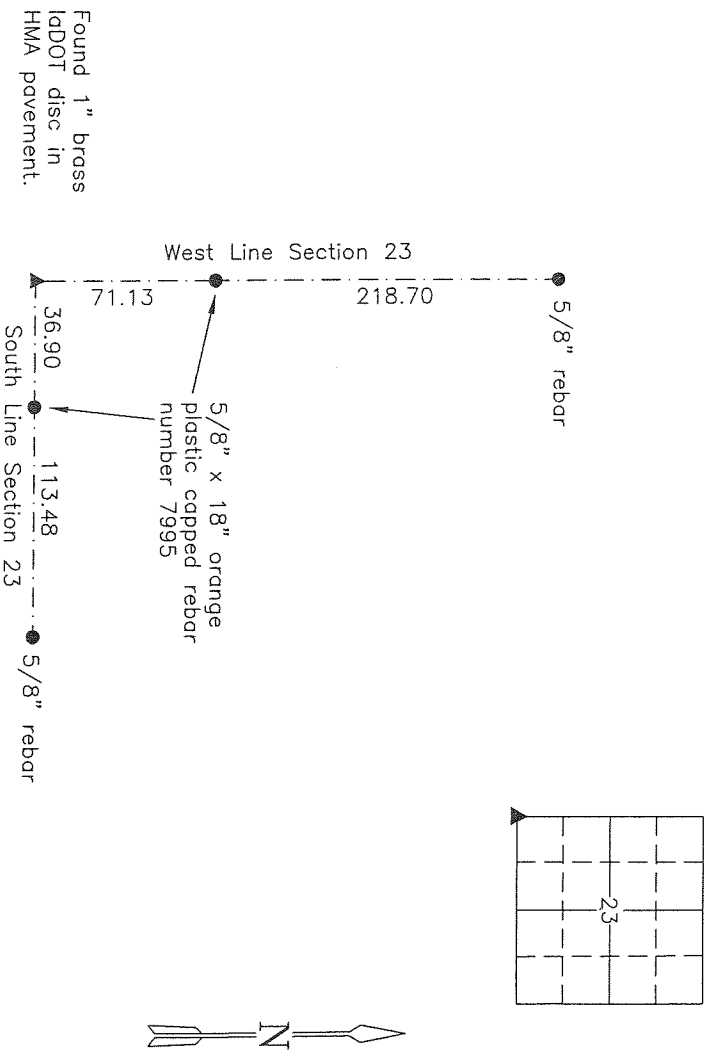
(Show reason for preparing this certificate, the evidence and detailed procedures used in establishing the corner positions and monumentation found or placed.)

Monument Description and Remarks: Found 1" brass IADOT disc in HMA pavement. A new Certificate was not discovered after the monument type changed after IADOT construction work on the the northwest bound lanes of Ia. Hwy. 163.

This corner was used for a Plat of Survey in the SW 1/4 of the SW 1/4 of Section 23.

PLAN VIEW

(Show a minimum of three reference ties to durable physical objects, relevant monuments and physical conditions that will enable recovery of the corner.)



SW Corner SW 1/4 Section 23

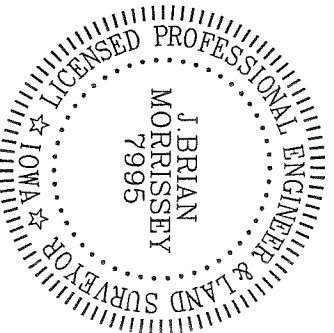
NOTE: ALL TIES TO BRASS DISK UNLESS NOTED

I hereby certify that this land surveying document was prepared and the related survey work was performed by me or under my direct personal supervision and that I am a duly Licensed Land Surveyor under the laws of the state of Iowa.

Signature: J. Brian Morrissey Date: 8/22/14
 J. Brian Morrissey
 License number 7995.
 My license renewal date is December 31, 2015

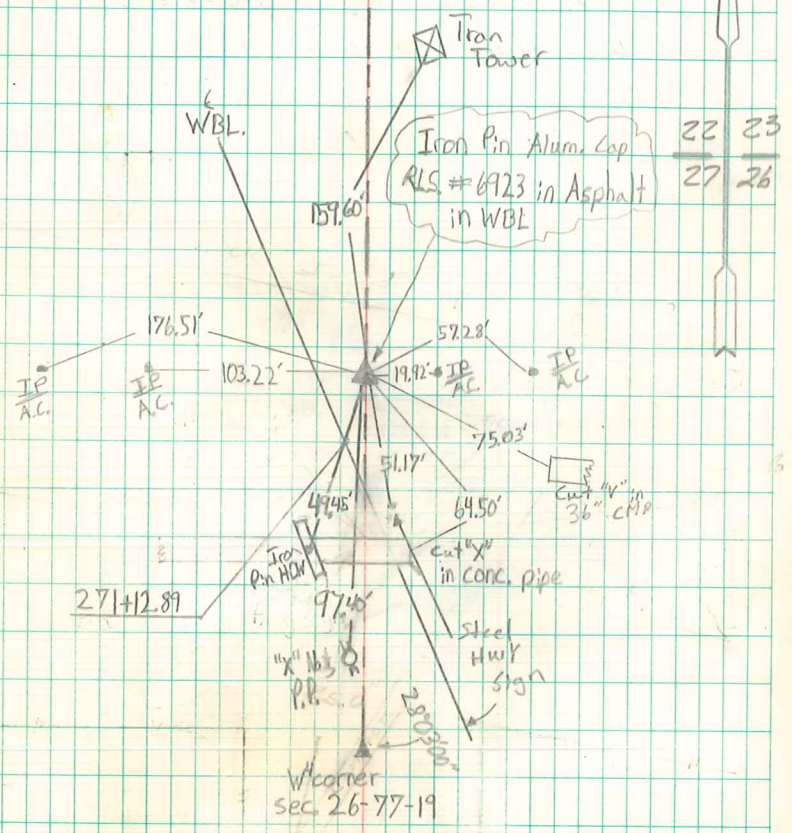
756-148-3

2500 ck - Ret Morrissey Surveying



Found Lead Plug in Pavement
of Highway # 163

N.E. Cor. 27-77-19
Set - 3-14-41
Notes = Kennedy



22	23
27	26

FOUND LEAD PLUG IN
PUNT. SET 5/8" I.P.
W/ ALUM CAP #6923
10/6/92
Retied 6/25/98