

Found 1-3 $\frac{1}{2}$ " A Tile Filled with
Rock & Concrete over 4" Drilled Hole
1' Deep Filled with Broken Brick &
Concrete.

Set 0.1m. over the A Tile
" Sandstone Top C.m.

C.m. 6" Below Surface

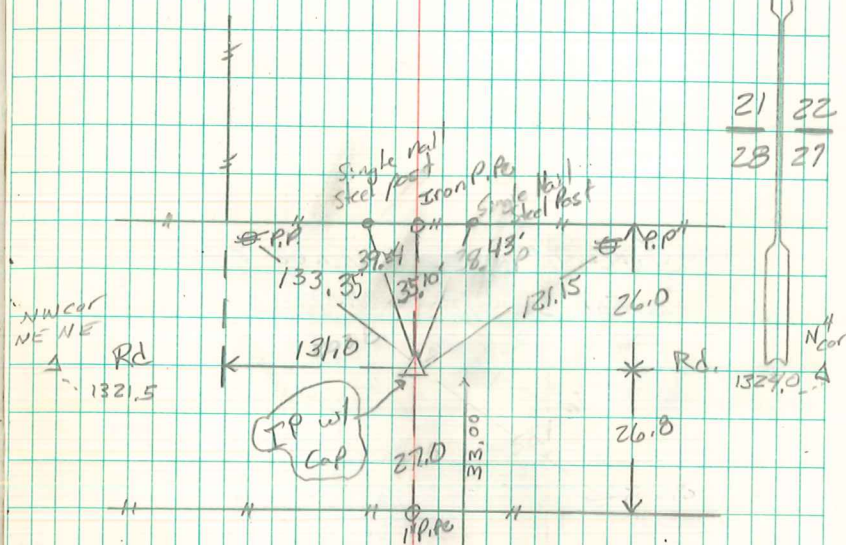
6/24/96 - Fd. 8" x 8" x 12" Limestone Drilled Hole
in Stone & inserted a 5/8" x 5"
Iron Pin w/ Alum Cap
R.L.S. No. 6707.

N. E. Cor 28-77-19

Set- 3-25-41

Notes - Kennedy

Party - Shore & adgen



Found & Retried
Set - 60^d SPK over L.S.
Rock may 1-1980

6/24/96

Found 10/30/06
Abie Davis