

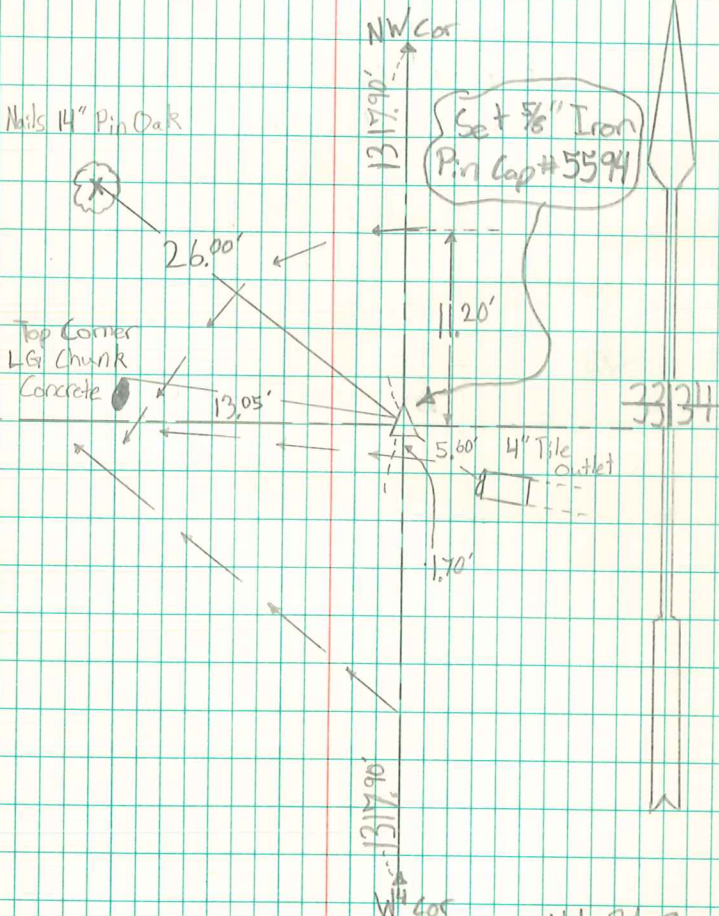
11/23/09 - Set at mid-point & on line between
the W⁴ corner & the NW
corner Sec. 34.

NW corner SW⁴ NW⁴
Sec. 34-77-19

"X" Nails 14" Pin Oak

Top Corner
LGI Chunk
Concrete

Set 5/8" Iron
Pin Cap #5594



11/23/09
Abie Davis